

DUS3L (N-20): sc-246486

BACKGROUND

DUS3L (tRNA-dihydrouridine synthase 3-like), also known as DUS3 or FLJ13896, is a 650 amino acid member of the DUS protein family. Utilizing FAD as a cofactor, DUS3L catalyzes the synthesis of dihydrouridine, a modified base found in the D-loop of most tRNAs. DUS3L contains two C₃H₁-type zinc fingers and is expressed as three isoforms produced by alternative splicing events. The gene that encodes DUS3L maps to human chromosome 19, which consists of approximately 63 million bases and makes up over 2% of human genomic DNA. Chromosome 19 includes a diversity of interesting genes and is recognized for having the greatest gene density of the human chromosomes. It is the genetic home for a number of immunoglobulin superfamily members including the killer cell and leukocyte Ig-like receptors, a number of ICAMs, the CEACAM and PSG family, and Fcα receptors.

REFERENCES

- Zimmermann, W., et al. 1988. Chromosomal localization of the carcinoembryonic antigen gene family and differential expression in various tumors. *Cancer Res.* 48: 2550-2554.
- LaPoint, S.F., et al. 2000. Cerebral autosomal dominant arteriopathy with subcortical infarcts and leukoencephalopathy (CADASIL). *Adv. Anat. Pathol.* 7: 307-321.
- Trettel, F., et al. 2000. A fine physical map of the CACNA1A gene region on 19p13.1-p13.2 chromosome. *Gene* 241: 45-50.
- Buchet-Poyau, K., et al. 2002. Search for the second Peutz-Jeghers syndrome locus: exclusion of the STK13, PRKCG, KLK10, and PSCD2 genes on chromosome 19 and the STK11IP gene on chromosome 2. *Cytogenet. Genome Res.* 97: 171-178.
- Moodie, S.J., et al. 2002. Analysis of candidate genes on chromosome 19 in coeliac disease: an association study of the KIR and LILR gene clusters. *Eur. J. Immunogenet.* 29: 287-291.
- Grimwood, J., et al. 2004. The DNA sequence and biology of human chromosome 19. *Nature* 428: 529-535.
- Parham, P. 2005. Immunogenetics of killer cell immunoglobulin-like receptors. *Mol. Immunol.* 42: 459-462.

CHROMOSOMAL LOCATION

Genetic locus: DUS3L (human) mapping to 19p13.3.

SOURCE

DUS3L (N-20) is an affinity purified goat polyclonal antibody raised against a peptide mapping near the N-terminus of DUS3L of human origin.

PRODUCT

Each vial contains 200 µg IgG in 1.0 ml of PBS with < 0.1% sodium azide and 0.1% gelatin.

Blocking peptide available for competition studies, sc-246486 P, (100 µg peptide in 0.5 ml PBS containing < 0.1% sodium azide and 0.2% BSA).

APPLICATIONS

DUS3L (N-20) is recommended for detection of DUS3L of human origin by Western Blotting (starting dilution 1:200, dilution range 1:100-1:1000), immunofluorescence (starting dilution 1:50, dilution range 1:50-1:500) and solid phase ELISA (starting dilution 1:30, dilution range 1:30-1:3000); non cross-reactive with DUS1L, DUS2L or DUS4L.

Suitable for use as control antibody for DUS3L siRNA (h): sc-97628, DUS3L shRNA Plasmid (h): sc-97628-SH and DUS3L shRNA (h) Lentiviral Particles: sc-97628-V.

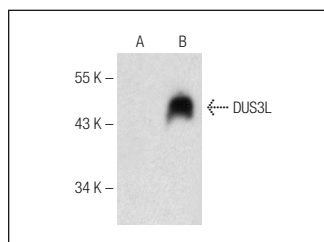
Molecular Weight of DUS3L isoforms: 73/53/46 kDa.

Positive Controls: DUS3L (m): 293T Lysate: sc-119862.

RECOMMENDED SECONDARY REAGENTS

To ensure optimal results, the following support (secondary) reagents are recommended: 1) Western Blotting: use donkey anti-goat IgG-HRP: sc-2020 (dilution range: 1:2000-1:100,000) or Cruz Marker™ compatible donkey anti-goat IgG-HRP: sc-2033 (dilution range: 1:2000-1:5000), Cruz Marker™ Molecular Weight Standards: sc-2035, TBS Blotto A Blocking Reagent: sc-2333 and Western Blotting Luminol Reagent: sc-2048. 2) Immunofluorescence: use donkey anti-goat IgG-FITC: sc-2024 (dilution range: 1:100-1:400) or donkey anti-goat IgG-TR: sc-2783 (dilution range: 1:100-1:400) with UltraCruz™ Mounting Medium: sc-24941.

DATA



DUS3L (N-20): sc-246486. Western blot analysis of DUS3L expression in non-transfected: sc-117752 (A) and mouse DUS3L transfected: sc-119862 (B) 293T whole cell lysates.

STORAGE

Store at 4° C, ****DO NOT FREEZE****. Stable for one year from the date of shipment. Non-hazardous. No MSDS required.

RESEARCH USE

For research use only, not for use in diagnostic procedures.

PROTOCOLS

See our web site at www.scbt.com or our catalog for detailed protocols and support products.