

FAM153A/B (N-17): sc-246581

BACKGROUND

FAM153A, FAM153B and FAM153C are 310, 387 and 144 amino acid proteins, respectively, that are encoded by a genes mapping to human chromosome 5. With 181 million base pairs encoding around 1,000 genes, chromosome 5 is about 6% of human genomic DNA. It is associated with Cockayne syndrome through the ERCC8 gene and familial adenomatous polyposis through the adenomatous polyposis coli (APC) tumor suppressor gene. Treacher Collins syndrome is also chromosome 5 associated and is caused by insertions or deletions within the TCOF1 gene. Deletion of the p arm of chromosome 5 leads to cri du chat syndrome. Deletion of 5q or chromosome 5 altogether is common in therapy-related acute myelogenous leukemias and myelodysplastic syndrome.

REFERENCES

- Dixon, M.J., et al. 1991. The gene for Treacher Collins syndrome maps to the long arm of chromosome 5. *Am. J. Hum. Genet.* 49: 17-22.
- Saltman, D.L., et al. 1993. A physical map of 15 loci on human chromosome 5q23-q33 by two-color fluorescence *in situ* hybridization. *Genomics* 16: 726-732.
- Kadmon, M., et al. 2001. Duodenal adenomatosis in familial adenomatous polyposis coli. A review of the literature and results from the heidelberg polyposis register. *Int. J. Colorectal Dis.* 16: 63-75.
- South, S.T., et al. 2006. A new genomic mechanism leading to cri-du-chat syndrome. *Am. J. Med. Genet. A* 140: 2714-2720.
- Aretz, S., et al. 2007. Somatic APC mosaicism: a frequent cause of familial adenomatous polyposis (FAP). *Hum. Mutat.* 28: 985-992.
- Cleaver, J.E., et al. 2007. Cockayne syndrome exhibits dysregulation of p21 and other gene products that may be independent of transcription-coupled repair. *Neuroscience* 145: 1300-1308.

CHROMOSOMAL LOCATION

Genetic locus: FAM153A/FAM153B (human) mapping to 5q35.3.

SOURCE

FAM153A/B (N-17) is an affinity purified goat polyclonal antibody raised against a peptide mapping near the N-terminus of FAM153A of human origin.

PRODUCT

Each vial contains 200 µg IgG in 1.0 ml of PBS with < 0.1% sodium azide and 0.1% gelatin.

Blocking peptide available for competition studies, sc-246581 P, (100 µg peptide in 0.5 ml PBS containing < 0.1% sodium azide and 0.2% BSA).

STORAGE

Store at 4° C, ****DO NOT FREEZE****. Stable for one year from the date of shipment. Non-hazardous. No MSDS required.

APPLICATIONS

FAM153A/B (N-17) is recommended for detection of FAM153A and FAM153B of human origin by Western Blotting (starting dilution 1:200, dilution range 1:100-1:1000), immunoprecipitation [1-2 µg per 100-500 µg of total protein (1 ml of cell lysate)], immunofluorescence (starting dilution 1:50, dilution range 1:50-1:500) and solid phase ELISA (starting dilution 1:30, dilution range 1:30-1:3000).

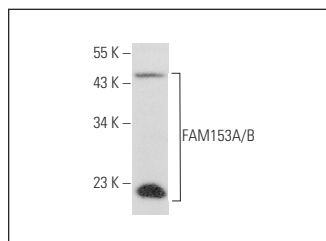
Molecular Weight of FAM153A/B: 35/44/17/13 kDa.

Positive Controls: SK-N-MC cell lysate: sc-2237, K-562 whole cell lysate: sc-2203 or FAM153A (h): 293T Lysate: sc-369308.

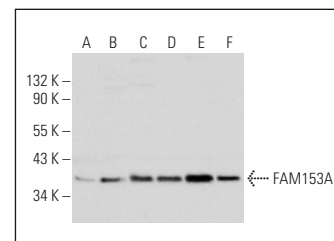
RECOMMENDED SECONDARY REAGENTS

To ensure optimal results, the following support (secondary) reagents are recommended: 1) Western Blotting: use donkey anti-goat IgG-HRP: sc-2020 (dilution range: 1:2000-1:100,000) or Cruz Marker™ compatible donkey anti-goat IgG-HRP: sc-2033 (dilution range: 1:2000-1:5000), Cruz Marker™ Molecular Weight Standards: sc-2035, TBS Blotto A Blocking Reagent: sc-2333 and Western Blotting Luminol Reagent: sc-2048. 2) Immunoprecipitation: use Protein A/G PLUS-Agarose: sc-2003 (0.5 ml agarose/2.0 ml). 3) Immunofluorescence: use donkey anti-goat IgG-FITC: sc-2024 (dilution range: 1:100-1:400) or donkey anti-goat IgG-TR: sc-2783 (dilution range: 1:100-1:400) with UltraCruz™ Mounting Medium: sc-24941.

DATA



FAM153A/B (N-17): sc-246581. Western blot analysis of FAM153A/B expression in SK-N-MC whole cell lysate.



FAM153A/B (N-17): sc-246581. Western blot analysis of FAM153A expression in non-transfected 293T: sc-117752 (A), human FAM153A transfected 293T: sc-369308 (B), HeLa (C), Jurkat (D), K-562 (E) and Hep G2 (F) whole cell lysates.

RESEARCH USE

For research use only, not for use in diagnostic procedures.

PROTOCOLS

See our web site at www.scbt.com or our catalog for detailed protocols and support products.