

GRAMD1A (K-17): sc-247075

BACKGROUND

GRAMD1A (GRAM domain containing 1A) is a 724 amino acid single-pass membrane protein that contains one GRAM domain and exists as 3 alternatively spliced isoforms. The gene encoding GRAMD1A maps to human chromosome 19q13.11. Consisting of around 63 million bases with over 1,400 genes, chromosome 19 makes up over 2% of human genomic DNA. Chromosome 19 includes a diversity of interesting genes and is recognized for having the greatest gene density of the human chromosomes. It is the genetic home for a number of immunoglobulin superfamily members including the killer cell and leukocyte Ig-like receptors, a number of ICAMs, the CEACAM and PSG family, and Fc α receptors. Key genes for eye color and hair color also map to chromosome 19. Peutz-Jeghers syndrome, spinocerebellar ataxia type 6, the stroke disorder CADASIL, hypercholesterolemia and Insulin-dependent diabetes have been linked to chromosome 19.

REFERENCES

- Olsen, A., et al. 1994. Gene organization of the pregnancy-specific glycoprotein region on human chromosome 19: assembly and analysis of a 700-kb cosmid contig spanning the region. *Genomics* 23: 659-668.
- Teglund, S., et al. 1994. The pregnancy-specific glycoprotein (PSG) gene cluster on human chromosome 19: fine structure of the 11 PSG genes and identification of 6 new genes forming a third subgroup within the carcinoembryonic antigen (CEA) family. *Genomics* 23: 669-684.
- Wang, L., et al. 2000. C-CAM1, a candidate tumor suppressor gene, is abnormally expressed in primary lung cancers. *Clin. Cancer Res.* 6: 2988-2993.
- Trowsdale, J., et al. 2001. The genomic context of natural killer receptor extended gene families. *Immunol. Rev.* 181: 20-38.
- Le Meur, N., et al. 2004. Complete germline deletion of the STK11 gene in a family with Peutz-Jeghers syndrome. *Eur. J. Hum. Genet.* 12: 415-418.
- Leeb, T. and Müller, M. 2004. Comparative human-mouse-rat sequence analysis of the ICAM gene cluster on HSA 19p13.2 and a 185-kb porcine region from SSC 2q. *Gene* 343: 239-244.
- Barrow, A.D. and Trowsdale, J. 2008. The extended human leukocyte receptor complex: diverse ways of modulating immune responses. *Immunol. Rev.* 224: 98-123.

CHROMOSOMAL LOCATION

Genetic locus: GRAMD1A (human) mapping to 19q13.11; Gramd1a (mouse) mapping to 7 B1.

SOURCE

GRAMD1A (K-17) is an affinity purified goat polyclonal antibody raised against a peptide mapping within an internal region of GRAMD1A of human origin.

STORAGE

Store at 4° C, **DO NOT FREEZE**. Stable for one year from the date of shipment. Non-hazardous. No MSDS required.

PRODUCT

Each vial contains 200 μ g IgG in 1.0 ml of PBS with < 0.1% sodium azide and 0.1% gelatin.

Blocking peptide available for competition studies, sc-247075 P, (100 μ g peptide in 0.5 ml PBS containing < 0.1% sodium azide and 0.2% BSA).

APPLICATIONS

GRAMD1A (K-17) is recommended for detection of GRAMD1A of mouse, rat and human origin by Western Blotting (starting dilution 1:200, dilution range 1:100-1:1000), immunoprecipitation [1-2 μ g per 100-500 μ g of total protein (1 ml of cell lysate)], immunofluorescence (starting dilution 1:50, dilution range 1:50-1:500) and solid phase ELISA (starting dilution 1:30, dilution range 1:30-1:3000); non cross-reactive with GRAMD1B or GRAMD1C.

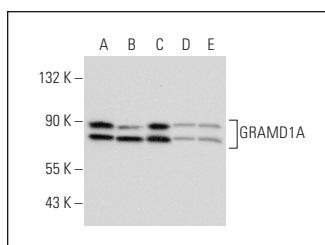
GRAMD1A (K-17) is also recommended for detection of GRAMD1A in additional species, including equine, canine, bovine and porcine.

Suitable for use as control antibody for GRAMD1A siRNA (h): sc-97859, GRAMD1A siRNA (m): sc-145749, GRAMD1A shRNA Plasmid (h): sc-97859-SH, GRAMD1A shRNA Plasmid (m): sc-145749-SH, GRAMD1A shRNA (h) Lentiviral Particles: sc-97859-V and GRAMD1A shRNA (m) Lentiviral Particles: sc-145749-V.

Molecular Weight of GRAMD1A isoforms: 81/79/80 kDa.

Positive Controls: HeLa whole cell lysate: sc-2200, Jurkat whole cell lysate: sc-2204 or U-698-M whole cell lysate: sc-364799.

DATA



GRAMD1A (K-17): sc-247075. Western blot analysis of GRAMD1A expression in HeLa (A), Jurkat (B), U-698-M (C), Hep G2 (D) and HEK293 (E) whole cell lysates.

RESEARCH USE

For research use only, not for use in diagnostic procedures.

PROTOCOLS

See our web site at www.scbt.com or our catalog for detailed protocols and support products.