

HEATR5A (N-14): sc-247118

BACKGROUND

Chromosome 14 contains about 700 genes and 106 million base pairs, comprising about 3.5% of human cellular DNA. Chromosome 14 encodes the presenilin 1 (PSEN1) gene, which is one of the three key genes associated with the development of Alzheimer's disease. The SERPINA1 gene is located on chromosome 14 and when defective leads to the genetic disorder α 1-antitrypsin deficiency. This disorder is characterized by severe lung complications and liver dysfunction. Notably, the immunoglobulin heavy chain locus is found on chromosome 14 and has been identified as a fusion with the chromosome 19 encoded protein Bcl-3 in the (14;19) translocations found in a variety of B cell malignancies.

REFERENCES

1. Heilig, R., et al. 2003. The DNA sequence and analysis of human chromosome 14. *Nature* 421: 601-607.
2. Godbolt, A.K., et al. 2004. A presenilin 1 R278I mutation presenting with language impairment. *Neurology* 63: 1702-1704.
3. Stolk, J., et al. 2006. α 1-antitrypsin deficiency: current perspective on research, diagnosis, and management. *Int. J. Chron. Obstruct. Pulmon. Dis.* 1: 151-160.
4. Vetrivel, K.S., et al. 2006. Pathological and physiological functions of presenilins. *Mol. Neurodegener.* 1: 4.
5. Albani, D., et al. 2007. Presenilin-1 mutation E318G and familial Alzheimer's disease in the Italian population. *Neurobiol. Aging* 28: 1682-1688.
6. Cruz, P.E., et al. 2007. The promise of gene therapy for the treatment of α 1 antitrypsin deficiency. *Pharmacogenomics* 8: 1191-1198.
7. Filley, C.M., et al. 2007. The genetics of very early onset Alzheimer disease. *Cogn. Behav. Neurol.* 20: 149-156.
8. Martín-Subero, J.I., et al. 2007. A comprehensive genetic and histopathologic analysis identifies two subgroups of B-cell malignancies carrying a t(14;19)(q32;q13) or variant Bcl-3 translocation. *Leukemia* 21: 1532-1544.
9. Micci, F., et al. 2007. Molecular cytogenetic characterization of t(14;19)(q32;p13), a new recurrent translocation in B cell malignancies. *Virchows Arch.* 450: 559-565.

CHROMOSOMAL LOCATION

Genetic locus: HEATR5A (human) mapping to 14q12.

SOURCE

HEATR5A (N-14) is an affinity purified goat polyclonal antibody raised against a peptide mapping near the N-terminus of HEATR5A of human origin.

PRODUCT

Each vial contains 200 μ g IgG in 1.0 ml of PBS with < 0.1% sodium azide and 0.1% gelatin.

Blocking peptide available for competition studies, sc-247118 P, (100 μ g peptide in 0.5 ml PBS containing < 0.1% sodium azide and 0.2% BSA).

APPLICATIONS

HEATR5A (N-14) is recommended for detection of HEATR5A of human origin by Western Blotting (starting dilution 1:200, dilution range 1:100-1:1000), immunofluorescence (starting dilution 1:50, dilution range 1:50-1:500) and solid phase ELISA (starting dilution 1:30, dilution range 1:30-1:3000); non cross-reactive with HEATR5B.

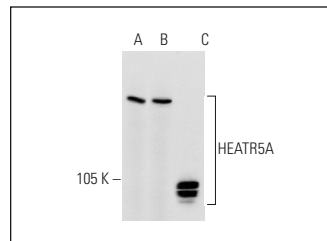
HEATR5A (N-14) is also recommended for detection of HEATR5A in additional species, including canine, bovine, porcine and avian.

Positive Controls: Jurkat whole cell lysate: sc-2204, K-562 whole cell lysate: sc-2203 or human testis extract: sc-363781.

RECOMMENDED SECONDARY REAGENTS

To ensure optimal results, the following support (secondary) reagents are recommended: 1) Western Blotting: use donkey anti-goat IgG-HRP: sc-2020 (dilution range: 1:2000-1:100,000) or Cruz Marker™ compatible donkey anti-goat IgG-HRP: sc-2033 (dilution range: 1:2000-1:5000), Cruz Marker™ Molecular Weight Standards: sc-2035, TBS Blotto A Blocking Reagent: sc-2333 and Western Blotting Luminol Reagent: sc-2048. 2) Immunofluorescence: use donkey anti-goat IgG-FITC: sc-2024 (dilution range: 1:100-1:400) or donkey anti-goat IgG-TR: sc-2783 (dilution range: 1:100-1:400) with UltraCruz™ Mounting Medium: sc-24941.

DATA



HEATR5A (N-14): sc-247118. Western blot analysis of HEATR5A expression in Jurkat (A) and K-562 (B) whole cell lysates and human testis tissue extract (C).

STORAGE

Store at 4° C, **DO NOT FREEZE**. Stable for one year from the date of shipment. Non-hazardous. No MSDS required.

RESEARCH USE

For research use only, not for use in diagnostic procedures.

PROTOCOLS

See our web site at www.scbt.com or our catalog for detailed protocols and support products.