

donkey anti-sheep IgG-HRP: sc-2473

BACKGROUND

Santa Cruz Biotechnology's secondary antibodies are available conjugated to either an enzyme, biotin or fluorophore for use in a variety of antibody-based applications including Western Blot, immunostaining, flow cytometry and ELISA. Secondary antibodies are commonly affinity purified against immobilized whole IgG isotypes, including IgG₁, IgG_{2a}, IgG_{2b}, IgG₃ and IgG₄. Santa Cruz Biotechnology offers a wide selection of secondary antibodies, which are used in conjunction with our Cruz Marker™ molecular weight standards. We also provide specialized secondaries, such as pre-adsorbed secondary antibodies, which are pre-adsorbed with human IgG and mouse IgG for immunoglobulin-rich tissues and cells, F(ab')₂ fragment secondary antibodies that reduce non-specific secondary antibody binding to Fc receptors on the cell surface, and isotype-specific secondary antibodies against IgM, IgA and IgY.

SOURCE

donkey anti-sheep IgG-HRP is an affinity purified secondary antibody raised in donkey against sheep IgG and conjugated to HRP (horseradish peroxidase).

PRODUCT

Each vial contains 200 µg IgG in 0.5 ml of 1X PBS containing 40% glycerol.

APPLICATIONS

donkey anti-sheep IgG-HRP is recommended for detection of sheep IgG by Western Blotting (starting dilution: 1:5000, dilution range 1:5000-1:10000; optimal dilution to be determined by titration).

RECOMMENDED SUPPORT PRODUCTS

- Western Blotting Luminol Reagent, for 2,000 cm² membrane area: sc-2048
- RIPA Lysis Buffer, 50 ml, cell lysis buffer with protease inhibitors: sc-24948
- Electrophoresis Sample Buffer, 2X, 25 ml, reducing buffer: sc-24945
- Complete™ Protease Inhibitor Cocktail Tablet, 20 tablets: sc-29130
- Running Buffer, 10X, 1 L, TRIS-Glycine WB running buffer, pH 8.3: sc-24949
- Towbin, with SDS, 10X, 1 L, WB transfer buffer pH 8.3: sc-24954
- Bovine Serum Albumin (BSA), 100 g, blocking/incubation agent: sc-2323
- TBS Blotto A, lyophilized powder in single-use bottle: sc-2333
- UltraCruz™ PVDF Transfer Membrane, 0.45 µm, 30 cm x 3 m roll: sc-3723
- UltraCruz™ Nitrocellulose Pure Transfer Membrane, 0.22 µm, 30 cm x 3 m roll: sc-3718
- UltraCruz™ Tissue Culture Dish, 100 mm polystyrene dish: sc-200286
- UltraCruz™ Cell Scrapers, 25 cm, sterile, 100 per case: sc-213229
- UltraCruz™ Electrophoresis Cell: sc-201625: runs up to 10 or 15 sample by SDS – PAGE protein electrophoresis
- UltraCruz™ Autoradiography Film, Blue, 8 x 1, 100 sheets: sc-201697
- UltraCruz™ Gel Incubation Trays, 100 per pack: sc-201755 (blue), sc-201756 (green), sc-201757 (pink), sc-201758 (yellow), sc-201759 (orange)

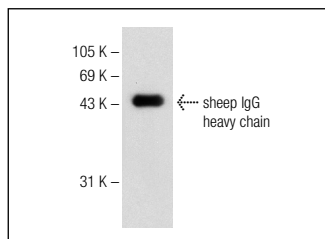
RESEARCH USE

For research use only, not for use in diagnostic procedures.

STORAGE

Store at 4° C, ****DO NOT FREEZE****. Stable for one year from the date of shipment. Non-hazardous. No MSDS required.

DATA



donkey anti-sheep IgG-HRP: sc-2473. Western blot detection of denatured sheep IgG heavy chain.

SELECT PRODUCT CITATIONS

- Viney, T.J., et al. 2004. Regulation of the cell-specific calcitonin/calcitonin gene-related peptide enhancer by USF and the Foxa2 forkhead protein. *J. Biol. Chem.* 279: 49948-49955.
- Loiselle, F.B., et al. 2004. Regulation of the human NBC3 Na⁺/HCO₃⁻ cotransporter by carbonic anhydrase II and PKA. *Am. J. Physiol., Cell Physiol.* 286: C1423-C1433.
- Lloyd, C.M., et al. 2004. A novel role for non-muscle γ -actin in skeletal muscle sarcomere assembly. *Exp. Cell Res.* 297: 82-96.
- Quintana, L., et al. 2009. Early tissue patterning recreated by mouse embryonic fibroblasts in a three-dimensional environment. *Tissue Eng. Part A* 15: 45-54.
- Kyono, A., et al. 2011. FGF and ERK signaling coordinately regulate mineralization-related genes and play essential roles in osteocyte differentiation. *J. Bone Miner. Metab.* 30: 19-30.
- Karam, M., et al. 2012. Protein kinase D1 stimulates proliferation and enhances tumorigenesis of MCF-7 human breast cancer cells through a MEK/ERK-dependent signaling pathway. *Exp. Cell Res.* 318: 558-569.
- Burbridge, M.F., et al. 2013. S49076 is a novel kinase inhibitor of MET, AXL and FGFR with strong preclinical activity alone and in association with bevacizumab. *Mol. Cancer Ther.* E-published.

PROTOCOLS

See our web site at www.scbt.com or our catalog for detailed protocols and support products.