

KLKBL4 (D-18): sc-247384

BACKGROUND

KLKBL4, also known as PRSS54 (inactive serine protease 54), CT67 (cancer/testis antigen 67) or plasma kallikrein-like protein 4, is a 395 amino acid secreted protein. Belonging to the peptidase S1 family and plasma kallikrein subfamily, KLKBL4 contains one peptidase S1 domain. The gene encoding KLKBL4 maps to human chromosome 16, which encodes over 900 genes in approximately 90 million base pairs, makes up nearly 3% of human cellular DNA and is associated with a variety of genetic disorders. The GAN gene is located on chromosome 16 and, with mutation, may lead to giant axonal neuropathy, a nervous system disorder characterized by increasing malfunction with growth. The rare disorder Rubinstein-Taybi syndrome is also associated with chromosome 16, though through the CREBBP gene which encodes a critical CREB binding protein. Signs of Rubinstein-Taybi include mental retardation and predisposition to tumor growth and white blood cell neoplasias. Crohn's disease is a gastrointestinal inflammatory condition associated with chromosome 16 through the NOD2 gene.

REFERENCES

- Baraitser, M. and Preece, M.A. 1983. The Rubinstein-Taybi syndrome: occurrence in two sets of identical twins. *Clin. Genet.* 23: 318-320.
- Breuning, M.H., et al. 1993. Rubinstein-Taybi syndrome caused by submicroscopic deletions within 16p13.3. *Am. J. Hum. Genet.* 52: 249-254.
- Bomont, P., et al. 2000. The gene encoding gigaxonin, a new member of the cytoskeletal BTB/kelch repeat family, is mutated in giant axonal neuropathy. *Nat. Genet.* 26: 370-374.
- Kuhlenbäumer, G., et al. 2002. Giant axonal neuropathy (GAN): case report and two novel mutations in the gigaxonin gene. *Neurology* 58: 1273-1276.
- Cho, J.H. 2004. Advances in the genetics of inflammatory bowel disease. *Curr. Gastroenterol. Rep.* 6: 467-473.
- Mathew, C.G. and Lewis, C.M. 2004. Genetics of inflammatory bowel disease: progress and prospects. *Hum. Mol. Genet.* 13: R161-R168.

CHROMOSOMAL LOCATION

Genetic locus: Prss54 (mouse) mapping to 8 D1.

SOURCE

KLKBL4 (D-18) is an affinity purified goat polyclonal antibody raised against a peptide mapping within an internal region of KLKBL4 of mouse origin.

PRODUCT

Each vial contains 200 µg IgG in 1.0 ml of PBS with < 0.1% sodium azide and 0.1% gelatin.

Blocking peptide available for competition studies, sc-247384 P, (100 µg peptide in 0.5 ml PBS containing < 0.1% sodium azide and 0.2% BSA).

STORAGE

Store at 4° C, ****DO NOT FREEZE****. Stable for one year from the date of shipment. Non-hazardous. No MSDS required.

APPLICATIONS

KLKBL4 (D-18) is recommended for detection of KLKBL4 of mouse origin by Western Blotting (starting dilution 1:200, dilution range 1:100-1:1000), immunoprecipitation [1-2 µg per 100-500 µg of total protein (1 ml of cell lysate)], immunofluorescence (starting dilution 1:50, dilution range 1:50-1:500) and solid phase ELISA (starting dilution 1:30, dilution range 1:30-1:3000).

Suitable for use as control antibody for KLKBL4 siRNA (m): sc-146555, KLKBL4 shRNA Plasmid (m): sc-146555-SH and KLKBL4 shRNA (m) Lentiviral Particles: sc-146555-V.

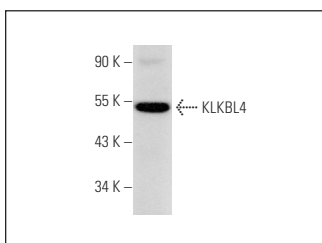
Molecular Weight of KLKBL4: 44 kDa.

Positive Controls: mouse liver extract: sc-2256.

RECOMMENDED SECONDARY REAGENTS

To ensure optimal results, the following support (secondary) reagents are recommended: 1) Western Blotting: use donkey anti-goat IgG-HRP: sc-2020 (dilution range: 1:2000-1:100,000) or Cruz Marker™ compatible donkey anti-goat IgG-HRP: sc-2033 (dilution range: 1:2000-1:5000), Cruz Marker™ Molecular Weight Standards: sc-2035, TBS Blotto A Blocking Reagent: sc-2333 and Western Blotting Luminol Reagent: sc-2048. 2) Immunoprecipitation: use Protein A/G PLUS-Agarose: sc-2003 (0.5 ml agarose/2.0 ml). 3) Immunofluorescence: use donkey anti-goat IgG-FITC: sc-2024 (dilution range: 1:100-1:400) or donkey anti-goat IgG-TR: sc-2783 (dilution range: 1:100-1:400) with UltraCruz™ Mounting Medium: sc-24941.

DATA



KLKBL4 (D-18): sc-247384. Western blot analysis of KLKBL4 expression in mouse liver tissue extract.

RESEARCH USE

For research use only, not for use in diagnostic procedures.

PROTOCOLS

See our web site at www.scbt.com or our catalog for detailed protocols and support products.