

# SLC25A48 (T-17): sc-247550

## BACKGROUND

Mitochondrial inner membrane proteins are responsible for the transport of metabolites across the mitochondrial membrane. SLC25A48 (solute carrier family 25, member 48), also known as HDMCP, is a 311 amino acid multi-pass membrane protein that localizes to the mitochondria. Belonging to the mitochondrial carrier family, SLC25A48 contains three solcar repeats. SLC25A48 exists a three alternatively spliced isoforms and is encoded by a gene located on human chromosome 5q31.1. Chromosome 5 contains 181 million base pairs and comprises nearly 6% of the human genome. Deletion of the p arm of chromosome 5 leads to Cri du chat syndrome, while deletion of the q arm, or of chromosome 5 altogether, is common in therapy-related acute myelogenous leukemias and myelodysplastic syndrome.

## REFERENCES

- Dixon, M.J., Read, A.P., Donnai, D., Colley, A., Dixon, J. and Williamson, R. 1991. The gene for Treacher Collins syndrome maps to the long arm of chromosome 5. *Am. J. Hum. Genet.* 49: 17-22.
- Saltman, D.L., Dolganov, G.M., Warrington, J.A., Wasmuth, J.J. and Lovett, M. 1993. A physical map of 15 loci on human chromosome 5q23-q33 by two-color fluorescence *in situ* hybridization. *Genomics* 16: 726-732.
- Kadmon, M., Tandara, A. and Herfarth, C. 2001. Duodenal adenomatosis in familial adenomatous polyposis coli. A review of the literature and results from the Heidelberg Polyposis Register. *Int. J. Colorectal Dis.* 16: 63-75.
- South, S.T., Swensen, J.J., Maxwell, T., Rope, A., Brothman, A.R. and Chen, Z. 2006. A new genomic mechanism leading to cri-du-chat syndrome. *Am. J. Med. Genet. A* 140: 2714-2720.
- Aretz, S., Stienen, D., Friedrichs, N., Stemmler, S., Uhlhaas, S., Rahner, N., Propping, P. and Friedl, W. 2007. Somatic APC mosaicism: a frequent cause of familial adenomatous polyposis (FAP). *Hum. Mutat.* 28: 985-992.
- Cleaver, J.E., Hefner, E., Laposa, R.R., Karentz, D. and Marti, T. 2007. Cockayne syndrome exhibits dysregulation of p21 and other gene products that may be independent of transcription-coupled repair. *Neuroscience* 145: 1300-1308.
- Herry, A., Douet-Guilbert, N., Morel, F., Le Bris, M.J. and De Braekeleer, M. 2007. Redefining monosomy 5 by molecular cytogenetics in 23 patients with MDS/AML. *Eur. J. Haematol.* 78: 457-467.

## CHROMOSOMAL LOCATION

Genetic locus: Slc25a48 (mouse) mapping to 13 B1.

## SOURCE

SLC25A48 (T-17) is an affinity purified goat polyclonal antibody raised against a peptide mapping within an internal region of Slc25a48 of mouse origin.

## PRODUCT

Each vial contains 200 µg IgG in 1.0 ml of PBS with < 0.1% sodium azide and 0.1% gelatin.

Blocking peptide available for competition studies, sc-247550 P, (100 µg peptide in 0.5 ml PBS containing < 0.1% sodium azide and 0.2% BSA).

## APPLICATIONS

SLC25A48 (T-17) is recommended for detection of AU042651 of mouse and rat origin by Western Blotting (starting dilution 1:200, dilution range 1:100-1:1000), immunoprecipitation [1-2 µg per 100-500 µg of total protein (1 ml of cell lysate)], immunofluorescence (starting dilution 1:50, dilution range 1:50-1:500) and solid phase ELISA (starting dilution 1:30, dilution range 1:30-1:3000).

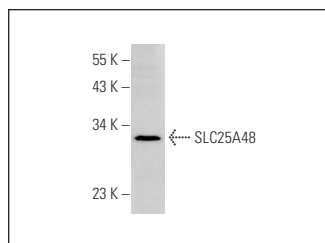
Suitable for use as control antibody for SLC25A48 siRNA (m): sc-141395, SLC25A48 shRNA Plasmid (m): sc-141395-SH and SLC25A48 shRNA (m) Lentiviral Particles: sc-141395-V.

Molecular Weight of SLC25A48 isoforms: 33/31/17 kDa.

## RECOMMENDED SECONDARY REAGENTS

To ensure optimal results, the following support (secondary) reagents are recommended: 1) Western Blotting: use donkey anti-goat IgG-HRP: sc-2020 (dilution range: 1:2000-1:100,000) or Cruz Marker™ compatible donkey anti-goat IgG-HRP: sc-2033 (dilution range: 1:2000-1:5000), Cruz Marker™ Molecular Weight Standards: sc-2035, TBS Blotto A Blocking Reagent: sc-2333 and Western Blotting Luminol Reagent: sc-2048. 2) Immunoprecipitation: use Protein A/G PLUS-Agarose: sc-2003 (0.5 ml agarose/2.0 ml). 3) Immunofluorescence: use donkey anti-goat IgG-FITC: sc-2024 (dilution range: 1:100-1:400) or donkey anti-goat IgG-TR: sc-2783 (dilution range: 1:100-1:400) with UltraCruz™ Mounting Medium: sc-24941.

## DATA



SLC25A48 (T-17): sc-247550. Western blot analysis of SLC25A48 expression in Jurkat whole cell lysate.

## STORAGE

Store at 4° C, **\*\*DO NOT FREEZE\*\***. Stable for one year from the date of shipment. Non-hazardous. No MSDS required.

## RESEARCH USE

For research use only, not for use in diagnostic procedures.

## PROTOCOLS

See our web site at [www.scbt.com](http://www.scbt.com) or our catalog for detailed protocols and support products.