

ZNF883 (N-15): sc-247552

BACKGROUND

Zinc-finger proteins contain DNA-binding domains and have a wide variety of functions, most of which encompass some form of transcriptional activation or repression. The majority of zinc-finger proteins contain a Krüppel-type DNA binding domain and a KRAB domain, which is thought to interact with KAP1, thereby recruiting histone modifying proteins. ZNF883 (zinc finger protein 883) is a 379 amino acid nuclear protein that may be involved in transcriptional regulation. Belonging to the Krüppel C₂H₂-type zinc-finger protein family, ZNF883 contains 13 C₂H₂-type zinc fingers. The gene encoding ZNF883 maps to human chromosome 9, which houses over 900 genes and comprises nearly 4% of the human genome. Hereditary hemorrhagic telangiectasia, which is characterized by harmful vascular defects, and Familial dysautonomia, are both associated with chromosome 9. Notably, chromosome 9 encompasses the largest interferon family gene cluster.

REFERENCES

- Thiesen, H.J. 1990. Multiple genes encoding zinc finger domains are expressed in human T cells. *New Biol.* 2: 363-374.
- Rousseau-Merck, M.F., et al. 1993. Chromosomal localization of 9 KOX zinc finger genes: physical linkages suggest clustering of KOX genes on chromosomes 12, 16, and 19. *Hum. Genet.* 92: 583-587.
- Rosenfeld, R. and Margalit, H. 1993. Zinc fingers: conserved properties that can distinguish between spurious and actual DNA-binding motifs. *J. Biomol. Struct. Dyn.* 11: 557-570.
- Han, Z.G., et al. 1999. Molecular cloning of six novel Krüppel-like zinc finger genes from hematopoietic cells and identification of a novel transregulatory domain KRNB. *J. Biol. Chem.* 274: 35741-35748.
- Zhuang, H., et al. 2006. Lupus-like disease and high interferon levels corresponding to trisomy of the type I interferon cluster on chromosome 9p. *Arthritis Rheum.* 54: 1573-1579.
- Burmeister, T., et al. 2007. Atypical BCR-ABL mRNA transcripts in adult acute lymphoblastic leukemia. *Haematologica* 92: 1699-1702.
- Cottin, V., et al. 2007. Pulmonary vascular manifestations of hereditary hemorrhagic telangiectasia (Rendu-Osler disease). *Respiration* 74: 361-378.

CHROMOSOMAL LOCATION

Genetic locus: ZNF883 (human) mapping to 9q32.

SOURCE

ZNF883 (N-15) is an affinity purified goat polyclonal antibody raised against a peptide mapping at the N-terminus of ZNF883 of human origin.

PRODUCT

Each vial contains 200 µg IgG in 1.0 ml of PBS with < 0.1% sodium azide and 0.1% gelatin.

Blocking peptide available for competition studies, sc-247552 P, (100 µg peptide in 0.5 ml PBS containing < 0.1% sodium azide and 0.2% BSA).

APPLICATIONS

ZNF883 (N-15) is recommended for detection of ZNF883 of human origin by Western Blotting (starting dilution 1:200, dilution range 1:100-1:1000), immunoprecipitation [1-2 µg per 100-500 µg of total protein (1 ml of cell lysate)], immunofluorescence (starting dilution 1:50, dilution range 1:50-1:500) and solid phase ELISA (starting dilution 1:30, dilution range 1:30-1:3000).

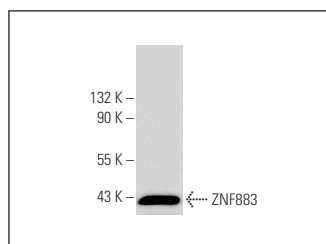
Molecular Weight of ZNF883: 44 kDa.

Positive Controls: HeLa whole cell lysate: sc-2200.

RECOMMENDED SECONDARY REAGENTS

To ensure optimal results, the following support (secondary) reagents are recommended: 1) Western Blotting: use donkey anti-goat IgG-HRP: sc-2020 (dilution range: 1:2000-1:100,000) or Cruz Marker™ compatible donkey anti-goat IgG-HRP: sc-2033 (dilution range: 1:2000-1:5000), Cruz Marker™ Molecular Weight Standards: sc-2035, TBS Blotto A Blocking Reagent: sc-2333 and Western Blotting Luminol Reagent: sc-2048. 2) Immunoprecipitation: use Protein A/G PLUS-Agarose: sc-2003 (0.5 ml agarose/2.0 ml). 3) Immunofluorescence: use donkey anti-goat IgG-FITC: sc-2024 (dilution range: 1:100-1:400) or donkey anti-goat IgG-TR: sc-2783 (dilution range: 1:100-1:400) with UltraCruz™ Mounting Medium: sc-24941.

DATA



ZNF883 (N-15): sc-247552. Western blot analysis of ZNF883 expression in HeLa whole cell lysate.

STORAGE

Store at 4° C, ****DO NOT FREEZE****. Stable for one year from the date of shipment. Non-hazardous. No MSDS required.

RESEARCH USE

For research use only, not for use in diagnostic procedures.

PROTOCOLS

See our web site at www.scbt.com or our catalog for detailed protocols and support products.