

LRP11 (K-20): sc-247828

BACKGROUND

Members of the LDL receptor gene family, including LDLR (low density lipoprotein receptor), LRP1 (low density lipoprotein related protein), megalin (also designated GP330), VLDLR (very low density lipoprotein receptor) and ApoER2 are characterized by a cluster of cysteine-rich class A repeats, epidermal growth factor (EGF)-like repeats, YWTD repeats and an O-linked sugar domain. LRP11 (low density lipoprotein receptor-related protein 11), also known as MANSC3, is a 500 amino acid single-pass type I membrane protein that exists as 2 alternatively spliced isoforms. LRP11 is encoded by a gene located on human chromosome 6q25.1. Chromosome 6 contains 170 million base pairs and comprises nearly 6% of the human genome. Deletion of a portion of the q arm of chromosome 6 is associated with early onset intestinal cancer, suggesting the presence of a cancer susceptibility locus. Additionally, Porphyria cutanea tarda, Parkinson's disease, Stickler syndrome and a susceptibility to bipolar disorder are all associated with genes that map to chromosome 6.

REFERENCES

- Ishii, H., Kim, D.H., Fujita, T., Endo, Y., Saeki, S. and Yamamoto, T.T. 1998. cDNA cloning of a new low-density lipoprotein receptor-related protein and mapping of its gene (LRP3) to chromosome bands 19q12-q13.2. *Genomics* 51: 132-135.
- Croy, J.E., Shin, W.D., Knauer, M.F., Knauer, D.J. and Komives, E.A. 2003. All three LDL receptor homology regions of the LDL receptor-related protein bind multiple ligands. *Biochemistry* 42: 13049-13057.
- Gonias, S.L., Wu, L. and Salicioni, A.M. 2004. Low density lipoprotein receptor-related protein: regulation of the plasma membrane proteome. *Thromb. Haemost.* 91: 1056-1064.
- May, P., Herz, J. and Bock, H.H. 2005. Molecular mechanisms of lipoprotein receptor signalling. *Cell. Mol. Life Sci.* 62: 2325-2338.
- May, P., Woldt, E., Matz, R.L. and Boucher, P. 2007. The LDL receptor-related protein (LRP) family: an old family of proteins with new physiological functions. *Ann. Med.* 39: 219-228.
- Jaeger, S. and Pietrzik, C.U. 2008. Functional role of lipoprotein receptors in Alzheimer's disease. *Curr. Alzheimer Res.* 5: 15-25.

CHROMOSOMAL LOCATION

Genetic locus: Lrp11 (mouse) mapping to 10 A1.

SOURCE

LRP11 (K-20) is an affinity purified goat polyclonal antibody raised against a peptide mapping within an extracellular domain of LRP11 of mouse origin.

PRODUCT

Each vial contains 200 µg IgG in 1.0 ml of PBS with < 0.1% sodium azide and 0.1% gelatin.

Blocking peptide available for competition studies, sc-247828 P, (100 µg peptide in 0.5 ml PBS containing < 0.1% sodium azide and 0.2% BSA).

APPLICATIONS

LRP11 (K-20) is recommended for detection of LRP11 of mouse and rat origin by Western Blotting (starting dilution 1:200, dilution range 1:100-1:1000), immunoprecipitation [1-2 µg per 100-500 µg of total protein (1 ml of cell lysate)], immunofluorescence (starting dilution 1:50, dilution range 1:50-1:500) and solid phase ELISA (starting dilution 1:30, dilution range 1:30-1:3000); non cross-reactive with other LRP family members.

Suitable for use as control antibody for LRP11 siRNA (m): sc-149044, LRP11 shRNA Plasmid (m): sc-149044-SH and LRP11 shRNA (m) Lentiviral Particles: sc-149044-V.

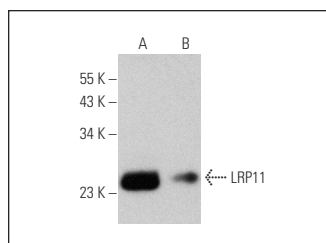
Molecular Weight of LRP11 isoforms: 53/25 kDa.

Positive Controls: mouse brain extract: sc-2253 or mouse skin extract: sc-364251.

RECOMMENDED SECONDARY REAGENTS

To ensure optimal results, the following support (secondary) reagents are recommended: 1) Western Blotting: use donkey anti-goat IgG-HRP: sc-2020 (dilution range: 1:2000-1:100,000) or Cruz Marker™ compatible donkey anti-goat IgG-HRP: sc-2033 (dilution range: 1:2000-1:5000), Cruz Marker™ Molecular Weight Standards: sc-2035, TBS Blotto A Blocking Reagent: sc-2333 and Western Blotting Luminol Reagent: sc-2048. 2) Immunoprecipitation: use Protein A/G PLUS-Agarose: sc-2003 (0.5 ml agarose/2.0 ml). 3) Immunofluorescence: use donkey anti-goat IgG-FITC: sc-2024 (dilution range: 1:100-1:400) or donkey anti-goat IgG-TR: sc-2783 (dilution range: 1:100-1:400) with UltraCruz™ Mounting Medium: sc-24941.

DATA



LRP11 (K-20): sc-247828. Western blot analysis of LRP11 expression in mouse brain (A) and mouse skin (B) tissue extracts.

STORAGE

Store at 4° C, **DO NOT FREEZE**. Stable for one year from the date of shipment. Non-hazardous. No MSDS required.

RESEARCH USE

For research use only, not for use in diagnostic procedures.

PROTOCOLS

See our web site at www.scbt.com or our catalog for detailed protocols and support products.