

# LRRC46 (S-20): sc-247858

## BACKGROUND

The leucine-rich (LRR) repeat is a 20-30 amino acid motif that forms a hydrophobic  $\alpha/\beta$  horseshoe fold, allowing it to accommodate several leucine residues within a tightly packed core. All LRR repeats contain a variable segment and a highly conserved segment, the latter of which accounts for 11 or 12 residues of the entire LRR motif. The primary function of these motifs is to provide a versatile structural framework to mediate the formation of protein-protein interactions. LRRs are present in a variety of proteins with diverse structure and function, including innate immunity and nervous system development. Several human diseases are associated with mutations in genes encoding LRR-containing proteins. The leucine-rich repeat-containing protein 46 (LRRC46) is a 321 amino acid protein that contains 4 LRR (leucine-rich) repeats and one LRRCT domain.

## REFERENCES

- Gomi, F., Imaizumi, K., Yoneda, T., Taniguchi, M., Mori, Y., Miyoshi, K., Hitomi, J., Fujikado, T., Tano, Y. and Tohyama, M. 2000. Molecular cloning of a novel membrane glycoprotein, pal, specifically expressed in photoreceptor cells of the retina and containing leucine-rich repeat. *J. Neurosci.* 20: 3206-3213.
- Kobe, B. and Kajava, A.V. 2001. The leucine-rich repeat as a protein recognition motif. *Curr. Opin. Struct. Biol.* 11: 725-732.
- Hofman, P., Hoyng, P., vanderWerf, F., Vrensen, G.F. and Schlingemann, R.O. 2001. Lack of blood-brain barrier properties in microvessels of the prelaminar optic nerve head. *Invest. Ophthalmol. Vis. Sci.* 42: 895-901.
- Hughes, J.M., Brink, A., Witmer, A.N., Hanraads-de Riemer, M., Klaassen, I. and Schlingemann, R.O. 2004. Vascular leucocyte adhesion molecules unaltered in the human retina in diabetes. *Br. J. Ophthalmol.* 88: 566-572.
- Kuiper, E.J., Witmer, A.N., Klaassen, I., Oliver, N., Goldschmeding, R. and Schlingemann, R.O. 2004. Differential expression of connective tissue growth factor in microglia and pericytes in the human diabetic retina. *Br. J. Ophthalmol.* 88: 1082-1087.
- Matsushima, N., Tachi, N., Kuroki, Y., Enkhbayar, P., Osaki, M., Kamiya, M. and Kretsinger, R.H. 2005. Structural analysis of leucine-rich-repeat variants in proteins associated with human diseases. *Cell. Mol. Life Sci.* 62: 2771-2791.

## CHROMOSOMAL LOCATION

Genetic locus: LRRC46 (human) mapping to 17q21.32; Lrrc46 (mouse) mapping to 11 D.

## SOURCE

LRRC46 (S-20) is an affinity purified goat polyclonal antibody raised against a peptide mapping within an internal region of LRRC46 of human origin.

## STORAGE

Store at 4° C, \*\*DO NOT FREEZE\*\*. Stable for one year from the date of shipment. Non-hazardous. No MSDS required.

## PRODUCT

Each vial contains 200  $\mu$ g IgG in 1.0 ml of PBS with < 0.1% sodium azide and 0.1% gelatin.

Blocking peptide available for competition studies, sc-247858 P, (100  $\mu$ g peptide in 0.5 ml PBS containing < 0.1% sodium azide and 0.2% BSA).

## APPLICATIONS

LRRC46 (S-20) is recommended for detection of LRRC46 of human and, to a lesser extent, mouse origin by Western Blotting (starting dilution 1:200, dilution range 1:100-1:1000), immunoprecipitation [1-2  $\mu$ g per 100-500  $\mu$ g of total protein (1 ml of cell lysate)], immunofluorescence (starting dilution 1:50, dilution range 1:50-1:500) and solid phase ELISA (starting dilution 1:30, dilution range 1:30-1:3000); non cross-reactive with other LRRC family members.

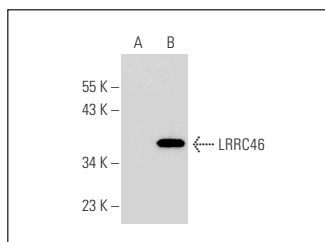
Suitable for use as control antibody for LRRC46 siRNA (h): sc-94129, LRRC46 siRNA (m): sc-149085, LRRC46 shRNA Plasmid (h): sc-94129-SH, LRRC46 shRNA Plasmid (m): sc-149085-SH, LRRC46 shRNA (h) Lentiviral Particles: sc-94129-V and LRRC46 shRNA (m) Lentiviral Particles: sc-149085-V.

Molecular Weight of LRRC46: 35 kDa.

## RECOMMENDED SECONDARY REAGENTS

To ensure optimal results, the following support (secondary) reagents are recommended: 1) Western Blotting: use donkey anti-goat IgG-HRP: sc-2020 (dilution range: 1:2000-1:100,000) or Cruz Marker™ compatible donkey anti-goat IgG-HRP: sc-2033 (dilution range: 1:2000-1:5000), Cruz Marker™ Molecular Weight Standards: sc-2035, TBS Blotto A Blocking Reagent: sc-2333 and Western Blotting Luminol Reagent: sc-2048. 2) Immunoprecipitation: use Protein A/G PLUS-Agarose: sc-2003 (0.5 ml agarose/2.0 ml). 3) Immunofluorescence: use donkey anti-goat IgG-FITC: sc-2024 (dilution range: 1:100-1:400) or donkey anti-goat IgG-TR: sc-2783 (dilution range: 1:100-1:400) with UltraCruz™ Mounting Medium: sc-24941.

## DATA



LRRC46 (S-20): sc-247858. Western blot analysis of LRRC46 expression in non-transfected: sc-117752 (A) and mouse LRRC46 transfected: sc-125559 (B) 293T whole cell lysates.

## RESEARCH USE

For research use only, not for use in diagnostic procedures.