

LRRC58 (K-15): sc-247876

BACKGROUND

LRRC58 (leucine-rich repeat-containing protein 58) is a 371 amino acid protein that contains 9 LRR (leucine-rich) repeats. The gene that encodes LRRC58 consists of approximately 25,000 bases and maps to human chromosome 3q13.33. As one of the largest human chromosomes, chromosome 3 has the lowest rate of segmental duplication in the genome. It also contains a chemokine receptor gene group as well as a number of loci involved in multiple human cancers. There is an average gene density of 8.8 genes per Mb on chromosome 3, making it one of the more gene-poor chromosomes. Although the average gene density is low, the genes that make up chromosome 3 are larger than average and make up about 49% of the chromosome. A 13.6-cM region on 3p21.31-21.2, where a tumor suppressor gene cluster is located, is believed to be a novel locus for nasopharyngeal carcinoma.

REFERENCES

- Collod, G., et al. 1994. A second locus for Marfan syndrome maps to chromosome 3p24.2-p25. *Nat. Genet.* 8: 264-268.
- De Jonghe, P., et al. 1997. Mutilating neuropathic ulcerations in a chromosome 3q13-q22 linked Charcot-Marie-Tooth disease type 2B family. *J. Neurol. Neurosurg. Psychiatr.* 62: 570-573.
- Maho, A., et al. 1999. Mapping of the CCXCR1, CX3CR1, CCBP2 and CCR9 genes to the CCR cluster within the 3p21.3 region of the human genome. *Cytogenet. Cell Genet.* 87: 265-268.
- Robinson, P.N. and Godfrey, M. 2000. The molecular genetics of Marfan syndrome and related microfibrilopathies. *J. Med. Genet.* 37: 9-25.
- Braga, E.A., et al. 2003. New tumor suppressor genes in hot spots of human chromosome 3: new methods of identification. *Mol. Biol.* 37: 194-211.
- Tsend-Ayush, E., et al. 2004. Plasticity of human chromosome 3 during primate evolution. *Genomics* 83: 193-202.
- Pfeifer, G.P., et al. 2005. Methylation of the tumor suppressor gene RASSF1A in human tumors. *Biochemistry* 70: 576-583.

CHROMOSOMAL LOCATION

Genetic locus: LRRC58 (human) mapping to 3q13.33; Lrrc58 (mouse) mapping to 16 B3.

SOURCE

LRRC58 (K-15) is an affinity purified goat polyclonal antibody raised against a peptide mapping within an internal region of LRRC58 of human origin.

STORAGE

Store at 4° C, ****DO NOT FREEZE****. Stable for one year from the date of shipment. Non-hazardous. No MSDS required.

PROTOCOLS

See our web site at www.scbt.com or our catalog for detailed protocols and support products.

PRODUCT

Each vial contains 200 µg IgG in 1.0 ml of PBS with < 0.1% sodium azide and 0.1% gelatin.

Blocking peptide available for competition studies, sc-247876 P, (100 µg peptide in 0.5 ml PBS containing < 0.1% sodium azide and 0.2% BSA).

APPLICATIONS

LRRC58 (K-15) is recommended for detection of LRRC58 of mouse, rat and human origin by Western Blotting (starting dilution 1:200, dilution range 1:100-1:1000), immunoprecipitation [1-2 µg per 100-500 µg of total protein (1 ml of cell lysate)], immunofluorescence (starting dilution 1:50, dilution range 1:50-1:500) and solid phase ELISA (starting dilution 1:30, dilution range 1:30-1:3000); non cross-reactive with other LRRC family members.

LRRC58 (K-15) is also recommended for detection of LRRC58 in additional species, including equine, canine, bovine and porcine.

Suitable for use as control antibody for LRRC58 siRNA (m): sc-149096, LRRC58 shRNA Plasmid (m): sc-149096-SH and LRRC58 shRNA (m) Lentiviral Particles: sc-149096-V.

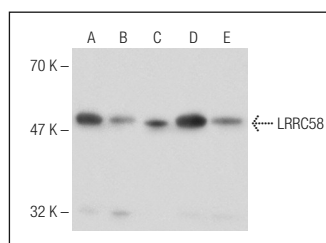
Molecular Weight of LRRC58: 41kDa.

Positive Controls: LNCaP cell lysate: sc-2231, U-87 MG cell lysate: sc-2411 or MDA-MB-468 cell lysate: sc-2282.

RECOMMENDED SECONDARY REAGENTS

To ensure optimal results, the following support (secondary) reagents are recommended: 1) Western Blotting: use donkey anti-goat IgG-HRP: sc-2020 (dilution range: 1:2000-1:100,000) or Cruz Marker™ compatible donkey anti-goat IgG-HRP: sc-2033 (dilution range: 1:2000-1:5000), Cruz Marker™ Molecular Weight Standards: sc-2035, TBS Blotto A Blocking Reagent: sc-2333 and Western Blotting Luminol Reagent: sc-2048. 2) Immunoprecipitation: use Protein A/G PLUS-Agarose: sc-2003 (0.5 ml agarose/2.0 ml). 3) Immunofluorescence: use donkey anti-goat IgG-FITC: sc-2024 (dilution range: 1:100-1:400) or donkey anti-goat IgG-TR: sc-2783 (dilution range: 1:100-1:400) with UltraCruz™ Mounting Medium: sc-24941.

DATA



LRRC58 (K-15): sc-247876. Western blot analysis of LRRC58 expression in HT-1080 (A), LNCaP (B), U-87 MG (C), MDA-MB-468 (D) and SK-BR-3 (E) whole cell lysates.

RESEARCH USE

For research use only, not for use in diagnostic procedures.