

MANEAL (E-17): sc-247929

BACKGROUND

MANEAL (mannosidase, endo- α -like), also known as glycoprotein endo- α -1, 2-mannosidase-like, is a 457 amino acid single-pass type II membrane protein of the Golgi apparatus that belongs to the glycosyl hydrolase 99 family. Existing as three alternatively spliced isoforms, MANEAL is encoded by a gene that maps to human chromosome 1p34.3. Human chromosome 1 spans 260 million base pairs, contains over 3,000 genes and comprises nearly 8% of the human genome. Chromosome 1 houses a large number of disease-associated genes, including those that are involved in familial adenomatous polyposis, Stickler syndrome, Parkinson's disease, Gaucher disease, schizophrenia and Usher syndrome. Aberrations in chromosome 1 are found in a variety of cancers, including head and neck cancer, malignant melanoma and multiple myeloma.

REFERENCES

1. Eudy, J.D., et al. 1998. Mutation of a gene encoding a protein with extracellular matrix motifs in Usher syndrome type IIa. *Science* 280: 1753-1757.
2. Lau, E.K., et al. 1999. Two novel polymorphic sequences in the glucocerebrosidase gene region enhance mutational screening and founder effect studies of patients with Gaucher disease. *Hum. Genet.* 104: 293-300.
3. Tayebi, N., et al. 2001. Gaucher disease and parkinsonism: a phenotypic and genotypic characterization. *Mol. Genet. Metab.* 73: 313-321.
4. Plasilova, M., et al. 2004. Exclusion of an extracolonic disease modifier locus on chromosome 1p33-36 in a large Swiss familial adenomatous polyposis kindred. *Eur. J. Hum. Genet.* 12: 365-371.
5. Oliveira, S.A., et al. 2005. Identification of risk and age-at-onset genes on chromosome 1p in Parkinson disease. *Am. J. Hum. Genet.* 77: 252-264.
6. Betarbet, R., et al. 2008. Fas-associated factor 1 and Parkinson's disease. *Neurobiol. Dis.* 31: 309-315.
7. Urov, Y.B., et al. 2008. The schizophrenia brain exhibits low-level aneuploidy involving chromosome 1. *Schizophr. Res.* 98: 139-147.
8. Balcárková, J., et al. 2009. Gain of chromosome arm 1q in patients in relapse and progression of multiple myeloma. *Cancer Genet. Cytogenet.* 192: 68-72.
9. Yokoi, T., et al. 2009. Analysis of the vitreous membrane in a case of type 1 Stickler syndrome. *Graefes Arch. Clin. Exp. Ophthalmol.* 247: 715-718.

CHROMOSOMAL LOCATION

Genetic locus: MANEAL (human) mapping to 1p34.3; Maneal (mouse) mapping to 4 D2.2.

SOURCE

MANEAL (E-17) is an affinity purified goat polyclonal antibody raised against a peptide mapping within an internal region of MANEAL of human origin.

STORAGE

Store at 4° C, **DO NOT FREEZE**. Stable for one year from the date of shipment. Non-hazardous. No MSDS required.

PRODUCT

Each vial contains 200 μ g IgG in 1.0 ml of PBS with < 0.1% sodium azide and 0.1% gelatin.

Blocking peptide available for competition studies, sc-247929 P, (100 μ g peptide in 0.5 ml PBS containing < 0.1% sodium azide and 0.2% BSA).

APPLICATIONS

MANEAL (E-17) is recommended for detection of MANEAL of mouse and human origin by Western Blotting (starting dilution 1:200, dilution range 1:100-1:1000), immunoprecipitation [1-2 μ g per 100-500 μ g of total protein (1 ml of cell lysate)], immunofluorescence (starting dilution 1:50, dilution range 1:50-1:500) and solid phase ELISA (starting dilution 1:30, dilution range 1:30-1:3000).

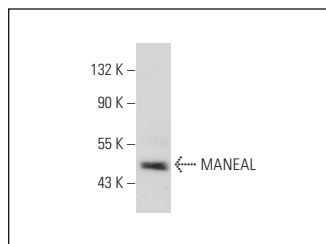
Suitable for use as control antibody for MANEAL siRNA (h): sc-88063, MANEAL siRNA (m): sc-145564, MANEAL shRNA Plasmid (h): sc-88063-SH, MANEAL shRNA Plasmid (m): sc-145564-SH, MANEAL shRNA (h) Lentiviral Particles: sc-88063-V and MANEAL shRNA (m) Lentiviral Particles: sc-145564-V.

Molecular Weight of MANEAL isoforms: 51/27 kDa.

RECOMMENDED SECONDARY REAGENTS

To ensure optimal results, the following support (secondary) reagents are recommended: 1) Western Blotting: use donkey anti-goat IgG-HRP: sc-2020 (dilution range: 1:2000-1:100,000) or Cruz Marker™ compatible donkey anti-goat IgG-HRP: sc-2033 (dilution range: 1:2000-1:5000), Cruz Marker™ Molecular Weight Standards: sc-2035, TBS Blotto A Blocking Reagent: sc-2333 and Western Blotting Luminol Reagent: sc-2048. 2) Immunoprecipitation: use Protein A/G PLUS-Agarose: sc-2003 (0.5 ml agarose/2.0 ml). 3) Immunofluorescence: use donkey anti-goat IgG-FITC: sc-2024 (dilution range: 1:100-1:400) or donkey anti-goat IgG-TR: sc-2783 (dilution range: 1:100-1:400) with UltraCruz™ Mounting Medium: sc-24941.

DATA



MANEAL (E-17): sc-247929. Western blot analysis of MANEAL expression in U-251-MG whole cell lysate.

RESEARCH USE

For research use only, not for use in diagnostic procedures.

PROTOCOLS

See our web site at www.scbt.com or our catalog for detailed protocols and support products.