

# MANEAL (F-16): sc-247932

## BACKGROUND

MANEAL (mannosidase, endo- $\alpha$ -like), also known as glycoprotein endo- $\alpha$ -1,2-mannosidase-like, is a 457 amino acid single-pass type II membrane protein of the Golgi apparatus that belongs to the glycosyl hydrolase 99 family. Existing as three alternatively spliced isoforms, MANEAL is encoded by a gene that maps to human chromosome 1p34.3. Human chromosome 1 spans 260 million base pairs, contains over 3,000 genes and comprises nearly 8% of the human genome. Chromosome 1 houses a large number of disease-associated genes, including those that are involved in familial adenomatous polyposis, Stickler syndrome, Parkinson's disease, Gaucher disease, schizophrenia and Usher syndrome. Aberrations in chromosome 1 are found in a variety of cancers, including head and neck cancer, malignant melanoma and multiple myeloma.

## REFERENCES

1. Eudy, J.D., Weston, M.D., Yao, S., Hoover, D.M., Rehm, H.L., Ma-Edmonds, M., Yan, D., Ahmad, I., Cheng, J.J., Ayuso, C., Cremers, C., Davenport, S., Moller, C., Talmadge, C.B., Beisel, K.W., Tamayo, M., Morton, C.C., Swaroop, A., Kimberling, W.J. and Sumegi, J. 1998. Mutation of a gene encoding a protein with extracellular matrix motifs in Usher syndrome type IIa. *Science* 280: 1753-1757.
2. Lau, E.K., Tayebi, N., Ingraham, L.J., Winfield, S.L., Koprivica, V., Stone, D.L., Zimran, A., Ginns, E.I. and Sidransky, E. 1999. Two novel polymorphic sequences in the glucocerebrosidase gene region enhance mutational screening and founder effect studies of patients with Gaucher disease. *Hum. Genet.* 104: 293-300.
3. Tayebi, N., Callahan, M., Madike, V., Stubblefield, B.K., Orvisky, E., Krasnewich, D., Fillano, J.J. and Sidransky, E. 2001. Gaucher disease and parkinsonism: a phenotypic and genotypic characterization. *Mol. Genet. Metab.* 73: 313-321.
4. Plasilova, M., Russell, A.M., Wanner, A., Wolf, A., Dobbie, Z., Müller, H.J. and Heinemann, K. 2004. Exclusion of an extracolonic disease modifier locus on chromosome 1p33-36 in a large Swiss familial adenomatous polyposis kindred. *Eur. J. Hum. Genet.* 12: 365-371.

## CHROMOSOMAL LOCATION

Genetic locus: Maneal (mouse) mapping to 4 D2.2.

## SOURCE

MANEAL (F-16) is an affinity purified goat polyclonal antibody raised against a peptide mapping near the N-terminus of MANEAL of mouse origin.

## PRODUCT

Each vial contains 200  $\mu$ g IgG in 1.0 ml of PBS with < 0.1% sodium azide and 0.1% gelatin.

Blocking peptide available for competition studies, sc-247932 P, (100  $\mu$ g peptide in 0.5 ml PBS containing < 0.1% sodium azide and 0.2% BSA).

## RESEARCH USE

For research use only, not for use in diagnostic procedures.

## APPLICATIONS

MANEAL (F-16) is recommended for detection of MANEAL of mouse and rat origin by Western Blotting (starting dilution 1:200, dilution range 1:100-1:1000), immunofluorescence (starting dilution 1:50, dilution range 1:50-1:500) and solid phase ELISA (starting dilution 1:30, dilution range 1:30-1:3000).

MANEAL (F-16) is also recommended for detection of MANEAL in additional species, including bovine.

Suitable for use as control antibody for MANEAL siRNA (m): sc-145564, MANEAL shRNA Plasmid (m): sc-145564-SH and MANEAL shRNA (m) Lentiviral Particles: sc-145564-V.

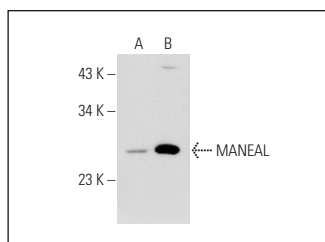
Molecular Weight of MANEAL isoforms: 51/27 kDa.

Positive Controls: PC-12 cell lysate: sc-2250 or mouse brain extract: sc-2253.

## RECOMMENDED SECONDARY REAGENTS

To ensure optimal results, the following support (secondary) reagents are recommended: 1) Western Blotting: use donkey anti-goat IgG-HRP: sc-2020 (dilution range: 1:2000-1:100,000) or Cruz Marker™ compatible donkey anti-goat IgG-HRP: sc-2033 (dilution range: 1:2000-1:5000), Cruz Marker™ Molecular Weight Standards: sc-2035, TBS Blotto A Blocking Reagent: sc-2333 and Western Blotting Luminol Reagent: sc-2048. 2) Immunofluorescence: use donkey anti-goat IgG-FITC: sc-2024 (dilution range: 1:100-1:400) or donkey anti-goat IgG-TR: sc-2783 (dilution range: 1:100-1:400) with UltraCruz™ Mounting Medium: sc-24941.

## DATA



MANEAL (F-16): sc-247932. Western blot analysis of MANEAL expression in PC-12 whole cell lysate (A) and mouse brain tissue extract (B).

## STORAGE

Store at 4° C, **\*\*DO NOT FREEZE\*\***. Stable for one year from the date of shipment. Non-hazardous. No MSDS required.

## PROTOCOLS

See our web site at [www.scbt.com](http://www.scbt.com) or our catalog for detailed protocols and support products.