

# MARVELD1 (A-16): sc-247950

## BACKGROUND

MARVELD1 (MARVEL domain containing 1), also known as GB14, MARVD1 or MRVLDC1, is a 173 amino acid protein that is widely expressed and contains one MARVEL (MAL and related proteins for vesicle trafficking and membrane link) domain. The MARVEL domain, which is common in occludin proteins, is a 130 amino acid motif that contains 4 transmembrane helices, both of which have cytoplasmic N- and C-terminal regions. Localizing to the nucleus, MARVELD1 is downregulated in primary multiple tumors of liver, bladder, ovary, vulva, breast, testis, uterus, kidney and testis. The gene encoding MARVELD1 maps to human chromosome 10, which makes up approximately 4.5% of total DNA in cells and encodes nearly 1,200 genes. Defects in some of the genes that map to chromosome 10 are associated with Charcot-Marie-Tooth disease, Jackson-Weiss syndrome, Usher syndrome, nonsyndromic deafness, Wolman's syndrome and Cowden syndrome.

## REFERENCES

- Jabs, E.W., et al. 1994. Jackson-Weiss and Crouzon syndromes are allelic with mutations in fibroblast growth factor receptor 2. *Nat. Genet.* 8: 275-279.
- Berger, P., et al. 2002. Molecular cell biology of Charcot-Marie-Tooth disease. *Neurogenetics* 4: 1-15.
- Sánchez-Pulido, L., et al. 2002. MARVEL: a conserved domain involved in membrane apposition events. *Trends Biochem. Sci.* 27: 599-601.
- Teresi, R.E., et al. 2007. Cowden syndrome-affected patients with PTEN promoter mutations demonstrate abnormal protein translation. *Am. J. Hum. Genet.* 81: 756-767.
- Cho, M.Y., et al. 2008. First report of ovarian dysgerminoma in Cowden syndrome with germline PTEN mutation and PTEN-related 10q loss of tumor heterozygosity. *Am. J. Surg. Pathol.* 32: 1258-1264.
- Wang, S., et al. 2009. Identification and characterization of MARVELD1, a novel nuclear protein that is down-regulated in multiple cancers and silenced by DNA methylation. *Cancer Lett.* 282: 77-86.
- Raleigh, D.R., et al. 2010. Tight junction-associated MARVEL proteins marvel3, tricellulin, and occludin have distinct but overlapping functions. *Mol. Biol. Cell* 21: 1200-1213.
- Blasig, I.E., et al. 2011. Occludin protein family: oxidative stress and reducing conditions. *Antioxid. Redox Signal.* 15: 1195-1219.

## CHROMOSOMAL LOCATION

Genetic locus: MARVELD1 (human) mapping to 10q24.2.

## SOURCE

MARVELD1 (A-16) is an affinity purified goat polyclonal antibody raised against a peptide mapping within a cytoplasmic domain of MARVELD1 of human origin.

## STORAGE

Store at 4° C, **\*\*DO NOT FREEZE\*\***. Stable for one year from the date of shipment. Non-hazardous. No MSDS required.

## PRODUCT

Each vial contains 200 µg IgG in 1.0 ml of PBS with < 0.1% sodium azide and 0.1% gelatin.

Blocking peptide available for competition studies, sc-247950 P, (100 µg peptide in 0.5 ml PBS containing < 0.1% sodium azide and 0.2% BSA).

## APPLICATIONS

MARVELD1 (A-16) is recommended for detection of MARVELD1 of human origin by Western Blotting (starting dilution 1:200, dilution range 1:100-1:1000), immunoprecipitation [1-2 µg per 100-500 µg of total protein (1 ml of cell lysate)], immunofluorescence (starting dilution 1:50, dilution range 1:50-1:500) and solid phase ELISA (starting dilution 1:30, dilution range 1:30-1:3000); non cross-reactive with MARVELD3.

Suitable for use as control antibody for MARVELD1 siRNA (h): sc-90392, MARVELD1 shRNA Plasmid (h): sc-90392-SH and MARVELD1 shRNA (h) Lentiviral Particles: sc-90392-V.

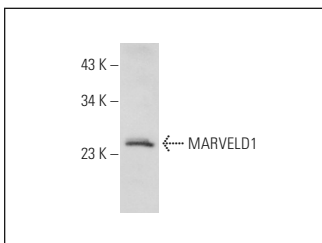
Molecular Weight of MARVELD1: 19 kDa.

Positive Controls: HeLa whole cell lysate: sc-2200.

## RECOMMENDED SECONDARY REAGENTS

To ensure optimal results, the following support (secondary) reagents are recommended: 1) Western Blotting: use donkey anti-goat IgG-HRP: sc-2020 (dilution range: 1:2000-1:100,000) or Cruz Marker™ compatible donkey anti-goat IgG-HRP: sc-2033 (dilution range: 1:2000-1:5000), Cruz Marker™ Molecular Weight Standards: sc-2035, TBS Blotto A Blocking Reagent: sc-2333 and Western Blotting Luminol Reagent: sc-2048. 2) Immunoprecipitation: use Protein A/G PLUS-Agarose: sc-2003 (0.5 ml agarose/2.0 ml). 3) Immunofluorescence: use donkey anti-goat IgG-FITC: sc-2024 (dilution range: 1:100-1:400) or donkey anti-goat IgG-TR: sc-2783 (dilution range: 1:100-1:400) with UltraCruz™ Mounting Medium: sc-24941.

## DATA



MARVELD1 (A-16): sc-247950. Western blot analysis of MARVELD1 expression in HeLa whole cell lysate.

## RESEARCH USE

For research use only, not for use in diagnostic procedures.

## PROTOCOLS

See our web site at [www.scbt.com](http://www.scbt.com) or our catalog for detailed protocols and support products.