

MIER2 (E-15): sc-247989

BACKGROUND

MIER2 (mesoderm induction early response 1, family member 2) is a 545 amino acid protein encoded by a gene that maps to human chromosome 19p13.3. Consisting of around 63 million bases with over 1,400 genes, chromosome 19 makes up over 2% of human genomic DNA. Chromosome 19 includes a diversity of interesting genes and is recognized for having the greatest gene density of the human chromosomes. It is the genetic home for a number of immunoglobulin superfamily members including the killer cell and leukocyte Ig-like receptors, a number of ICAMs, the CEACAM and PSG family, and Fc α receptors. Key genes for eye color and hair color also map to chromosome 19. Peutz-Jeghers syndrome, spinocerebellar ataxia type 6, the stroke disorder CADASIL, hypercholesterolemia and Insulin-dependent diabetes have been linked to chromosome 19. Translocations with chromosome 19 and chromosome 14 can be seen in some lymphoproliferative disorders and typically involve the proto-oncogene BCL3.

REFERENCES

- Olsen, A., Teglund, S., Nelson, D., Gordon, L., Copeland, A., Georgescu, A., Carrano, A. and Hammarström, S. 1994. Gene organization of the pregnancy-specific glycoprotein region on human chromosome 19: assembly and analysis of a 700-kb cosmid contig spanning the region. *Genomics* 23: 659-668.
- Teglund, S., Olsen, A., Khan, W.N., Frängsmyr, L. and Hammarström, S. 1994. The pregnancy-specific glycoprotein (PSG) gene cluster on human chromosome 19: fine structure of the 11 PSG genes and identification of 6 new genes forming a third subgroup within the carcinoembryonic antigen (CEA) family. *Genomics* 23: 669-684.
- Wang, L., Lin, S.H., Wu, W.G., Kemp, B.L., Walsh, G.L., Hong, W.K. and Mao, L. 2000. C-CAM1, a candidate tumor suppressor gene, is abnormally expressed in primary lung cancers. *Clin. Cancer Res.* 6: 2988-2993.
- Trowsdale, J., Barten, R., Haude, A., Stewart, C.A., Beck, S. and Wilson, M.J. 2001. The genomic context of natural killer receptor extended gene families. *Immunol. Rev.* 181: 20-38.

CHROMOSOMAL LOCATION

Genetic locus: MIER2 (human) mapping to 19p13.3; Mier2 (mouse) mapping to 10 C1.

SOURCE

MIER2 (E-15) is an affinity purified goat polyclonal antibody raised against a peptide mapping within an internal region of MIER2 of human origin.

PRODUCT

Each vial contains 200 μ g IgG in 1.0 ml of PBS with < 0.1% sodium azide and 0.1% gelatin.

Blocking peptide available for competition studies, sc-247989 P, (100 μ g peptide in 0.5 ml PBS containing < 0.1% sodium azide and 0.2% BSA).

RESEARCH USE

For research use only, not for use in diagnostic procedures.

APPLICATIONS

MIER2 (E-15) is recommended for detection of MIER2 of mouse, rat and human origin by Western Blotting (starting dilution 1:200, dilution range 1:100-1:1000), immunoprecipitation [1-2 μ g per 100-500 μ g of total protein (1 ml of cell lysate)], immunofluorescence (starting dilution 1:50, dilution range 1:50-1:500) and solid phase ELISA (starting dilution 1:30, dilution range 1:30-1:3000); non cross-reactive with MIER1 or MIER3.

Suitable for use as control antibody for MIER2 siRNA (h): sc-97667, MIER2 siRNA (m): sc-149430, MIER2 shRNA Plasmid (h): sc-97667-SH, MIER2 shRNA Plasmid (m): sc-149430-SH, MIER2 shRNA (h) Lentiviral Particles: sc-97667-V and MIER2 shRNA (m) Lentiviral Particles: sc-149430-V.

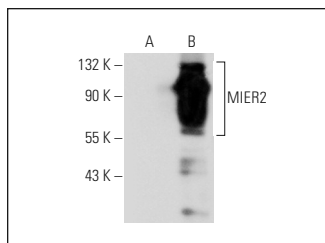
Molecular Weight of MIER2: 68 kDa.

Positive Controls: MIER2 (h): 293T Lysate: sc-114691.

RECOMMENDED SECONDARY REAGENTS

To ensure optimal results, the following support (secondary) reagents are recommended: 1) Western Blotting: use donkey anti-goat IgG-HRP: sc-2020 (dilution range: 1:2000-1:100,000) or Cruz Marker™ compatible donkey anti-goat IgG-HRP: sc-2033 (dilution range: 1:2000-1:5000), Cruz Marker™ Molecular Weight Standards: sc-2035, TBS Blotto A Blocking Reagent: sc-2333 and Western Blotting Luminol Reagent: sc-2048. 2) Immunoprecipitation: use Protein A/G PLUS-Agarose: sc-2003 (0.5 ml agarose/2.0 ml). 3) Immunofluorescence: use donkey anti-goat IgG-FITC: sc-2024 (dilution range: 1:100-1:400) or donkey anti-goat IgG-TR: sc-2783 (dilution range: 1:100-1:400) with UltraCruz™ Mounting Medium: sc-24941.

DATA



MIER2 (E-15): sc-247989. Western blot analysis of MIER2 expression in non-transfected: sc-117752 (A) and human MIER2 transfected: sc-114691 (B) 293T whole cell lysates.

STORAGE

Store at 4° C, ****DO NOT FREEZE****. Stable for one year from the date of shipment. Non-hazardous. No MSDS required.

PROTOCOLS

See our web site at www.scbt.com or our catalog for detailed protocols and support products.