

MOBKL2C (D-14): sc-247991

BACKGROUND

MOBKL2C (MOB1, Mps one binder kinase activator-like 2C), also known as MOB1E or MOB3C, is a 216 amino acid protein that belongs to the MOB1/phocean family and is thought to have a role in kinase activity. The gene encoding MOBKL2C maps to human chromosome 1, which spans 260 million base pairs, contains over 3,000 genes and comprises nearly 8% of the human genome. Chromosome 1 houses a large number of disease-associated genes, including those that are involved in familial adenomatous polyposis, Stickler syndrome, Parkinson's disease, Gaucher disease, schizophrenia and Usher syndrome. Aberrations in chromosome 1 are found in a variety of cancers, including head and neck cancer, malignant melanoma and multiple myeloma.

REFERENCES

1. Eudy, J.D., et al. 1998. Mutation of a gene encoding a protein with extracellular matrix motifs in Usher syndrome type IIa. *Science* 280: 1753-1757.
2. Tayebi, N., et al. 2001. Gaucher disease and parkinsonism: a phenotypic and genotypic characterization. *Mol. Genet. Metab.* 73: 313-321.
3. Plasilova, M., et al. 2004. Exclusion of an extracolonic disease modifier locus on chromosome 1p33-36 in a large Swiss familial adenomatous polyposis kindred. *Eur. J. Hum. Genet.* 12: 365-371.
4. Betarbet, R., et al. 2008. Fas-associated factor 1 and Parkinson's disease. *Neurobiol. Dis.* 31: 309-315.
5. Holliday, E.G., et al. 2009. Strong evidence for a novel schizophrenia risk locus on chromosome 1p31.1 in homogeneous pedigrees from Tamil Nadu, India. *Am. J. Psychiatry* 166: 206-215.
6. Balcárková, J., et al. 2009. Gain of chromosome arm 1q in patients in relapse and progression of multiple myeloma. *Cancer Genet. Cytogenet.* 192: 68-72.
7. Yokoi, T., et al. 2009. Analysis of the vitreous membrane in a case of type 1 Stickler syndrome. *Graefes Arch. Clin. Exp. Ophthalmol.* 247: 715-718.

CHROMOSOMAL LOCATION

Genetic locus: MOB3C (human) mapping to 1p33; Mob3c (mouse) mapping to 4 D1.

SOURCE

MOBKL2C (D-14) is an affinity purified goat polyclonal antibody raised against a peptide mapping within an internal region of MOBKL2C of human origin.

PRODUCT

Each vial contains 200 µg IgG in 1.0 ml of PBS with < 0.1% sodium azide and 0.1% gelatin.

Blocking peptide available for competition studies, sc-247991 P, (100 µg peptide in 0.5 ml PBS containing < 0.1% sodium azide and 0.2% BSA).

STORAGE

Store at 4° C, **DO NOT FREEZE**. Stable for one year from the date of shipment. Non-hazardous. No MSDS required.

APPLICATIONS

MOBKL2C (D-14) is recommended for detection of MOBKL2C of mouse, rat and human origin by Western Blotting (starting dilution 1:200, dilution range 1:100-1:1000), immunoprecipitation [1-2 µg per 100-500 µg of total protein (1 ml of cell lysate)], immunofluorescence (starting dilution 1:50, dilution range 1:50-1:500) and solid phase ELISA (starting dilution 1:30, dilution range 1:30-1:3000); non cross-reactive with MOBKL2A or MOBKL2B.

MOBKL2C (D-14) is also recommended for detection of MOBKL2C in additional species, including canine and bovine.

Suitable for use as control antibody for MOBKL2C siRNA (h): sc-78580, MOBKL2C siRNA (m): sc-149493, MOBKL2C shRNA Plasmid (h): sc-78580-SH, MOBKL2C shRNA Plasmid (m): sc-149493-SH, MOBKL2C shRNA (h) Lentiviral Particles: sc-78580-V and MOBKL2C shRNA (m) Lentiviral Particles: sc-149493-V.

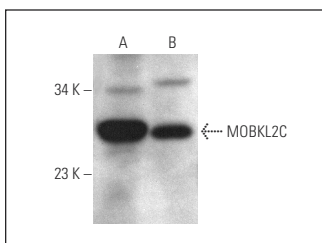
Molecular Weight of MOBKL2C: 26 kDa.

Positive Controls: mouse heart extract: sc-2254 or human heart extract: sc-363763.

RECOMMENDED SECONDARY REAGENTS

To ensure optimal results, the following support (secondary) reagents are recommended: 1) Western Blotting: use donkey anti-goat IgG-HRP: sc-2020 (dilution range: 1:2000-1:100,000) or Cruz Marker™ compatible donkey anti-goat IgG-HRP: sc-2033 (dilution range: 1:2000-1:5000), Cruz Marker™ Molecular Weight Standards: sc-2035, TBS Blotto A Blocking Reagent: sc-2333 and Western Blotting Luminol Reagent: sc-2048. 2) Immunoprecipitation: use Protein A/G PLUS-Agarose: sc-2003 (0.5 ml agarose/2.0 ml). 3) Immunofluorescence: use donkey anti-goat IgG-FITC: sc-2024 (dilution range: 1:100-1:400) or donkey anti-goat IgG-TR: sc-2783 (dilution range: 1:100-1:400) with UltraCruz™ Mounting Medium: sc-24941.

DATA



MOBKL2C (D-14): sc-247991. Western blot analysis of MOBKL2C expression in mouse heart (A) and human heart (B) tissue extracts.

RESEARCH USE

For research use only, not for use in diagnostic procedures.

PROTOCOLS

See our web site at www.scbt.com or our catalog for detailed protocols and support products.