

MSMP (D-15): sc-248010

BACKGROUND

MSMP (microseminoprotein, prostate associated), also known as PSMP (prostate-associated microseminoprotein) or PC3-secreted microprotein, is a 139 amino acid secreted protein that belongs to the β -microseminoprotein family. Expressed in trachea and testis, MSMP is found at high levels in human prostate cancer cell line PC-3 and is implicated in prostate cancer tumorigenesis. The gene encoding MSMP maps to human chromosome 9, which houses over 900 genes and comprises nearly 4% of the human genome. Hereditary hemorrhagic telangiectasia, which is characterized by harmful vascular defects, and familial dysautonomia, are both associated with chromosome 9. Notably, chromosome 9 encompasses the largest interferon family gene cluster.

REFERENCES

- Zhuang, H., et al. 2006. Lupus-like disease and high interferon levels corresponding to trisomy of the type I interferon cluster on chromosome 9p. *Arthritis Rheum.* 54: 1573-1579.
- Valtonen-André, C., et al. 2007. A highly conserved protein secreted by the prostate cancer cell line PC-3 is expressed in benign and malignant prostate tissue. *Biol. Chem.* 388: 289-295.
- Burmeister, T., et al. 2007. Atypical BCR-ABL mRNA transcripts in adult acute lymphoblastic leukemia. *Haematologica* 92: 1699-1702.
- Cottin, V., et al. 2007. Pulmonary vascular manifestations of hereditary hemorrhagic telangiectasia (Rendu-Osler disease). *Respiration* 74: 361-378.
- Zeit, M.J., et al. 2009. Organization of the amplified type I interferon gene cluster and associated chromosome regions in the interphase nucleus of human osteosarcoma cells. *Chromosome Res.* 17: 305-319.
- Gold-von Simson, G., et al. 2009. Kinetin in familial dysautonomia carriers: implications for a new therapeutic strategy targeting mRNA splicing. *Pediatr. Res.* 65: 341-346.
- Axelrod, F.B., et al. 2010. Neuroimaging supports central pathology in familial dysautonomia. *J. Neurol.* 257: 198-206.

CHROMOSOMAL LOCATION

Genetic locus: MSMP (human) mapping to 9p13.3; Msm (mouse) mapping to 4 B1.

SOURCE

MSMP (D-15) is an affinity purified goat polyclonal antibody raised against a peptide mapping within an internal region of MSMP of mouse origin.

STORAGE

Store at 4° C, ****DO NOT FREEZE****. Stable for one year from the date of shipment. Non-hazardous. No MSDS required.

PROTOCOLS

See our web site at www.scbt.com or our catalog for detailed protocols and support products.

PRODUCT

Each vial contains 200 μ g IgG in 1.0 ml of PBS with < 0.1% sodium azide and 0.1% gelatin.

Blocking peptide available for competition studies, sc-248010 P, (100 μ g peptide in 0.5 ml PBS containing < 0.1% sodium azide and 0.2% BSA).

APPLICATIONS

MSMP (D-15) is recommended for detection of MSMP of mouse, rat and human origin by Western Blotting (starting dilution 1:200, dilution range 1:100-1:1000), immunoprecipitation [1-2 μ g per 100-500 μ g of total protein (1 ml of cell lysate)], immunofluorescence (starting dilution 1:50, dilution range 1:50-1:500) and solid phase ELISA (starting dilution 1:30, dilution range 1:30-1:3000).

MSMP (D-15) is also recommended for detection of MSMP in additional species, including equine.

Suitable for use as control antibody for MSMP siRNA (m): sc-151500, MSMP shRNA Plasmid (m): sc-151500-SH and MSMP shRNA (m) Lentiviral Particles: sc-151500-V.

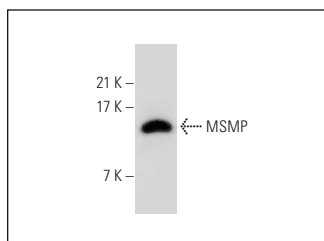
Molecular Weight of MSMP: 15 kDa.

Positive Controls: PC-3 cell lysate: sc-2220.

RECOMMENDED SECONDARY REAGENTS

To ensure optimal results, the following support (secondary) reagents are recommended: 1) Western Blotting: use donkey anti-goat IgG-HRP: sc-2020 (dilution range: 1:2000-1:100,000) or Cruz Marker™ compatible donkey anti-goat IgG-HRP: sc-2033 (dilution range: 1:2000-1:5000), Cruz Marker™ Molecular Weight Standards: sc-2035, TBS Blotto A Blocking Reagent: sc-2333 and Western Blotting Luminol Reagent: sc-2048. 2) Immunoprecipitation: use Protein A/G PLUS-Agarose: sc-2003 (0.5 ml agarose/2.0 ml). 3) Immunofluorescence: use donkey anti-goat IgG-FITC: sc-2024 (dilution range: 1:100-1:400) or donkey anti-goat IgG-TR: sc-2783 (dilution range: 1:100-1:400) with UltraCruz™ Mounting Medium: sc-24941.

DATA



MSMP (D-15): sc-248010. Western blot analysis of MSMP expression in PC-3 whole cell lysate.

RESEARCH USE

For research use only, not for use in diagnostic procedures.