

OSGEPL1 (S-18): sc-248187

BACKGROUND

OSGEPL1, also known as Qri7, is a 414 amino acid protein that belongs to the KAE1/YgjD family and exists as 3 alternatively spliced isoforms. In tRNAs that have codons beginning with adenine, OSGEPL1 is required for the formation of a threonylcarbamoyl group on adenosine. The gene that encodes OSGEPL1 contains about 16,568 bases and maps to human chromosome 2q32.2. Consisting of 237 million bases, chromosome 2 encodes over 1,400 genes and makes up approximately 8% of the human genome. A number of genetic diseases are linked to genes on chromosome 2. Harlequin ichthyosis, a rare and morbid skin deformity, is associated with mutations in the ABCA12 gene. The lipid metabolic disorder sitosterolemia is associated with ABCG5 and ABCG8. An extremely rare recessive genetic disorder, Alström syndrome, is due to mutations in the ALMS1 gene.

REFERENCES

- Baldini, A., Ried, T., Shridhar, V., Ogura, K., D'Aiuto, L., Rocchi, M. and Ward, D.C. 1993. An alphoid DNA sequence conserved in all human and great ape chromosomes: evidence for ancient centromeric sequences at human chromosomal regions 2q21 and 9q13. *Hum. Genet.* 90: 577-583.
- Patel, S.B., Salen, G., Hidaka, H., Kwitrovich, P.O., Stalenhoef, A.F., Miettinen, T.A., Grundy, S.M., Lee, M.H., Rubenstein, J.S., Polymeropoulos, M.H. and Brownstein, M.J. 1998. Mapping a gene involved in regulating dietary cholesterol absorption. The sitosterolemia locus is found at chromosome 2p21. *J. Clin. Invest.* 102: 1041-1044.
- Zumsteg, U., Muller, P.Y. and Miserez, A.R. 2000. Alstrom syndrome: confirmation of linkage to chromosome 2p12-13 and phenotypic heterogeneity in three affected sibs. *J. Med. Genet.* 37: E8.
- Shulenin, S., Schriml, L.M., Remaley, A.T., Fojo, S., Brewer, B., Allikmets, R. and Dean, M. 2001. An ATP-binding cassette gene (ABCG5) from the ABCG (White) gene subfamily maps to human chromosome 2p21 in the region of the Sitosterolemia locus. *Cytogenet. Cell Genet.* 92: 204-208.

CHROMOSOMAL LOCATION

Genetic locus: OSGEPL1 (human) mapping to 2q32.2; Osgepl1 (mouse) mapping to 1 C1.1.

SOURCE

OSGEPL1 (S-18) is an affinity purified goat polyclonal antibody raised against a peptide mapping within an internal region of OSGEPL1 of human origin.

PRODUCT

Each vial contains 200 µg IgG in 1.0 ml of PBS with < 0.1% sodium azide and 0.1% gelatin.

Blocking peptide available for competition studies, sc-248187 P, (100 µg peptide in 0.5 ml PBS containing < 0.1% sodium azide and 0.2% BSA).

STORAGE

Store at 4° C, ****DO NOT FREEZE****. Stable for one year from the date of shipment. Non-hazardous. No MSDS required.

APPLICATIONS

OSGEPL1 (S-18) is recommended for detection of OSGEPL1 of mouse, rat and human origin by Western Blotting (starting dilution 1:200, dilution range 1:100-1:1000), immunoprecipitation [1-2 µg per 100-500 µg of total protein (1 ml of cell lysate)], immunofluorescence (starting dilution 1:50, dilution range 1:50-1:500) and solid phase ELISA (starting dilution 1:30, dilution range 1:30-1:3000); non cross-reactive with OSGEP.

OSGEPL1 (S-18) is also recommended for detection of OSGEPL1 in additional species, including equine, canine, bovine, porcine and avian.

Suitable for use as control antibody for OSGEPL1 siRNA (h): sc-94989, OSGEPL1 siRNA (m): sc-151332, OSGEPL1 shRNA Plasmid (h): sc-94989-SH, OSGEPL1 shRNA Plasmid (m): sc-151332-SH, OSGEPL1 shRNA (h) Lentiviral Particles: sc-94989-V and OSGEPL1 shRNA (m) Lentiviral Particles: sc-151332-V.

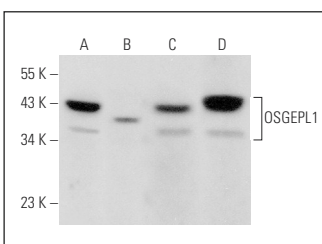
Molecular Weight of OSGEPL1 isoforms: 45/40/33 kDa.

Positive Controls: HeLa whole cell lysate: sc-2200, RT-4 whole cell lysate: sc-364257 or MCF7 whole cell lysate: sc-2206.

RECOMMENDED SECONDARY REAGENTS

To ensure optimal results, the following support (secondary) reagents are recommended: 1) Western Blotting: use donkey anti-goat IgG-HRP: sc-2020 (dilution range: 1:2000-1:100,000) or Cruz Marker™ compatible donkey anti-goat IgG-HRP: sc-2033 (dilution range: 1:2000-1:5000), Cruz Marker™ Molecular Weight Standards: sc-2035, TBS Blotto A Blocking Reagent: sc-2333 and Western Blotting Luminol Reagent: sc-2048. 2) Immunoprecipitation: use Protein A/G PLUS-Agarose: sc-2003 (0.5 ml agarose/2.0 ml). 3) Immunofluorescence: use donkey anti-goat IgG-FITC: sc-2024 (dilution range: 1:100-1:400) or donkey anti-goat IgG-TR: sc-2783 (dilution range: 1:100-1:400) with UltraCruz™ Mounting Medium: sc-24941.

DATA



OSGEPL1 (S-18): sc-248187. Western blot analysis of OSGEPL1 expression in HeLa (A), NIH/3T3 (B), RT-4 (C) and MCF7 (D) whole cell lysates.

RESEARCH USE

For research use only, not for use in diagnostic procedures.

PROTOCOLS

See our web site at www.scbt.com or our catalog for detailed protocols and support products.