

# Rab L5 (P-18): sc-248341

## BACKGROUND

The Ras-related superfamily of guanine nucleotide binding proteins includes the R-Ras, Rap, Ral/Rec and Rho/Rab subfamilies, all of which are thought to play an important role in either endocytosis or in biosynthetic protein transport. The process of transporting newly synthesized proteins from the endoplasmic reticulum (ER) to various stacks of the Golgi complex and to secretory vesicles involves the movement of carrier vesicles and requires Rab protein function. Rab proteins are also an integral part of endocytic pathways. Rab L5 (Rab, member RAS oncogene family-like 5) is a 185 amino acid protein that exists as multiple alternatively spliced isoforms and belongs to the Rab family of guanine nucleotide binding proteins, suggesting a role in protein transport. The gene encoding Rab L5 maps to human chromosome 7, which houses over 1,000 genes and comprises nearly 5% of the human genome.

## REFERENCES

1. Oikkonen, V.M., Dupree, P., Killisch, I., Lütcke, A., Zerial, M. and Simons, K. 1993. Molecular cloning and subcellular localization of three GTP-binding proteins of the rab subfamily. *J. Cell Sci.* 106: 1249-1261.
2. Chen, D., Guo, J. and Gahl, W.A. 1997. RAB GTPases expressed in human melanoma cells. *Biochim. Biophys. Acta* 1355: 1-6.
3. Opdam, F.J., Kamps, G., Croes, H., van Bokhoven, H., Ginsel, L.A. and Fransen, J.A. 2000. Expression of Rab small GTPases in epithelial Caco-2 cells: Rab21 is an apically located GTP-binding protein in polarised intestinal epithelial cells. *Eur. J. Cell Biol.* 79: 308-316.
4. Ali, B.R., Wasmeier, C., Lamoreux, L., Strom, M. and Seabra, M.C. 2004. Multiple regions contribute to membrane targeting of Rab GTPases. *J. Cell Sci.* 117: 6401-6412.
5. Chakrabarty, K. and Heumann, R. 2008. Prospective of Ras signaling in stem cells. *Biol. Chem.* 389: 791-798.
6. Fukuda, M., Kanno, E., Ishibashi, K. and Itoh, T. 2008. Large scale screening for novel rab effectors reveals unexpected broad Rab binding specificity. *Mol. Cell. Proteomics* 7: 1031-1042.

## CHROMOSOMAL LOCATION

Genetic locus: RABL5 (human) mapping to 7q22.1; Rabl5 (mouse) mapping to 5 G2.

## SOURCE

Rab L5 (P-18) is an affinity purified goat polyclonal antibody raised against a peptide mapping within an internal region of Rab L5 of mouse origin.

## PRODUCT

Each vial contains 200 µg IgG in 1.0 ml of PBS with < 0.1% sodium azide and 0.1% gelatin.

Blocking peptide available for competition studies, sc-248341 P, (100 µg peptide in 0.5 ml PBS containing < 0.1% sodium azide and 0.2% BSA).

## RESEARCH USE

For research use only, not for use in diagnostic procedures.

## APPLICATIONS

Rab L5 (P-18) is recommended for detection of Rab L5 of mouse, rat and human origin by Western Blotting (starting dilution 1:200, dilution range 1:100-1:1000), immunoprecipitation [1-2 µg per 100-500 µg of total protein (1 ml of cell lysate)], immunofluorescence (starting dilution 1:50, dilution range 1:50-1:500) and solid phase ELISA (starting dilution 1:30, dilution range 1:30-1:3000); non cross-reactive with other Rab L family members.

Rab L5 (P-18) is also recommended for detection of Rab L5 in additional species, including canine, bovine and porcine.

Suitable for use as control antibody for Rab L5 siRNA (h): sc-89762, Rab L5 siRNA (m): sc-152660, Rab L5 shRNA Plasmid (h): sc-89762-SH, Rab L5 shRNA Plasmid (m): sc-152660-SH, Rab L5 shRNA (h) Lentiviral Particles: sc-89762-V and Rab L5 shRNA (m) Lentiviral Particles: sc-152660-V.

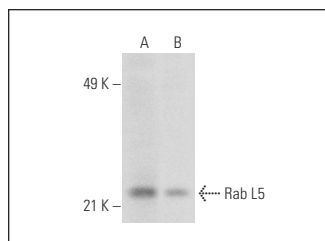
Molecular Weight of Rab L5: 21 kDa.

Positive Controls: mouse brain extract: sc-2253, CHO-K1 cell lysate: sc-3809.

## RECOMMENDED SECONDARY REAGENTS

To ensure optimal results, the following support (secondary) reagents are recommended: 1) Western Blotting: use donkey anti-goat IgG-HRP: sc-2020 (dilution range: 1:2000-1:100,000) or Cruz Marker™ compatible donkey anti-goat IgG-HRP: sc-2033 (dilution range: 1:2000-1:5000), Cruz Marker™ Molecular Weight Standards: sc-2035, TBS Blotto A Blocking Reagent: sc-2333 and Western Blotting Luminol Reagent: sc-2048. 2) Immunoprecipitation: use Protein A/G PLUS-Agarose: sc-2003 (0.5 ml agarose/2.0 ml). 3) Immunofluorescence: use donkey anti-goat IgG-FITC: sc-2024 (dilution range: 1:100-1:400) or donkey anti-goat IgG-TR: sc-2783 (dilution range: 1:100-1:400) with UltraCruz™ Mounting Medium: sc-24941.

## DATA



Rab L5 (P-18): sc-248341. Western blot analysis of Rab L5 expression in mouse brain tissue extract (A) and CHO-K1 whole cell lysate (B).

## STORAGE

Store at 4° C, \*\*DO NOT FREEZE\*\* Stable for one year from the date of shipment. Non-hazardous. No MSDS required.

## PROTOCOLS

See our web site at [www.scbt.com](http://www.scbt.com) or our catalog for detailed protocols and support products.