

SUHW3 (T-20): sc-248726

BACKGROUND

SUHW3 (suppressor of hairy wing homolog 3), also known as ZNF280C (zinc finger protein 280C) or ZNF633 (zinc finger protein 633), is a 737 amino acid nuclear protein that contains 5 C₂H₂-type zinc fingers and may function as a transcription factor. Upon DNA damage, SUHW3 becomes phosphorylated, most likely by Atm or Atr. The SUHW3 gene contains 66,250 bases, encodes 3 transcripts and maps to human chromosome Xq26.1. The X chromosome is one of the human sex chromosomes, which consists of about 153 million base pairs and nearly 1,000 genes. Color blindness, hemophilia and Duchenne muscular dystrophy are well known X chromosome-linked conditions which affect males most frequently, as males carry a single X chromosome. Turner's syndrome and triple X syndrome are two heritable conditions that can occur as a result of an unusual number of X chromosomes.

REFERENCES

- Gianfrancesco, F., Sanges, R., Esposito, T., Tempesta, S., Rao, E., Rappold, G., Archidiacono, N., Graves, J.A., Forabosco, A. and D'Urso, M. 2001. Differential divergence of three human pseudoautosomal genes and their mouse homologs: implications for sex chromosome evolution. *Genome Res.* 11: 2095-2100.
- Bernardino-Sgherri, J., Flagiello, D. and Dutrillaux, B. 2002. Overall DNA methylation and chromatin structure of normal and abnormal X chromosomes. *Cytogenet. Genome Res.* 99: 85-91.
- Deeb, S.S. 2005. The molecular basis of variation in human color vision. *Clin. Genet.* 67: 369-377.
- Bojesen, A., Kristensen, K., Birkebaek, N.H., Fedder, J., Mosekilde, L., Bennett, P., Laurberg, P., Frystyk, J., Flyvbjerg, A., Christiansen, J.S. and Gravholt, C.H. 2006. The metabolic syndrome is frequent in Klinefelter's syndrome and is associated with abdominal obesity and hypogonadism. *Diabetes Care* 29: 1591-1598.
- Maggio, M.C., Liotta, A., De Grazia, E., Cimador, M., Di Pace, R. and Corsello, G. 2007. Polycystic ovary and gonadoblastoma in Turner's syndrome. *Minerva Pediatr.* 59: 397-401.
- Matsuoka, S., Ballif, B.A., Smogorzewska, A., McDonald, E.R., Hurov, K.E., Luo, J., Bakalarski, C.E., Zhao, Z., Solimini, N., Lerenthal, Y., Shiloh, Y., Gygi, S.P. and Elledge, S.J. 2007. ATM and ATR substrate analysis reveals extensive protein networks responsive to DNA damage. *Science* 316: 1160-1166.

CHROMOSOMAL LOCATION

Genetic locus: ZNF280C (human) mapping to Xq26.1.

SOURCE

SUHW3 (T-20) is an affinity purified goat polyclonal antibody raised against a peptide mapping within an internal region of SUHW3 of human origin.

STORAGE

Store at 4° C, **DO NOT FREEZE**. Stable for one year from the date of shipment. Non-hazardous. No MSDS required.

PRODUCT

Each vial contains 200 µg IgG in 1.0 ml of PBS with < 0.1% sodium azide and 0.1% gelatin.

Blocking peptide available for competition studies, sc-248726 P, (100 µg peptide in 0.5 ml PBS containing < 0.1% sodium azide and 0.2% BSA).

APPLICATIONS

SUHW3 (T-20) is recommended for detection of SUHW3 of human origin by Western Blotting (starting dilution 1:200, dilution range 1:100-1:1000), immunoprecipitation [1-2 µg per 100-500 µg of total protein (1 ml of cell lysate)], immunofluorescence (starting dilution 1:50, dilution range 1:50-1:500) and solid phase ELISA (starting dilution 1:30, dilution range 1:30-1:3000); non cross-reactive with SUHW1 or SUHW4.

Suitable for use as control antibody for SUHW3 siRNA (h): sc-90954, SUHW3 shRNA Plasmid (h): sc-90954-SH and SUHW3 shRNA (h) Lentiviral Particles: sc-90954-V.

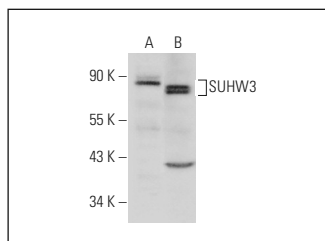
Molecular Weight of SUHW3: 83 kDa.

Positive Controls: HEK293 whole cell lysate: sc-45136 or human colon extract: sc-363757.

RECOMMENDED SECONDARY REAGENTS

To ensure optimal results, the following support (secondary) reagents are recommended: 1) Western Blotting: use donkey anti-goat IgG-HRP: sc-2020 (dilution range: 1:2000-1:100,000) or Cruz Marker™ compatible donkey anti-goat IgG-HRP: sc-2033 (dilution range: 1:2000-1:5000), Cruz Marker™ Molecular Weight Standards: sc-2035, TBS Blotto A Blocking Reagent: sc-2333 and Western Blotting Luminol Reagent: sc-2048. 2) Immunoprecipitation: use Protein A/G PLUS-Agarose: sc-2003 (0.5 ml agarose/2.0 ml). 3) Immunofluorescence: use donkey anti-goat IgG-FITC: sc-2024 (dilution range: 1:100-1:400) or donkey anti-goat IgG-TR: sc-2783 (dilution range: 1:100-1:400) with UltraCruz™ Mounting Medium: sc-24941.

DATA



SUHW3 (T-20): sc-248726. Western blot analysis of SUHW3 expression in HEK293 whole cell lysate (A) and human colon tissue extract (B).

RESEARCH USE

For research use only, not for use in diagnostic procedures.