

TSGA10IP (C-20): sc-249101

BACKGROUND

TSGA10IP (testis-specific protein 10-interacting protein) is a 556 amino acid gene product. TSGA10IP is believed to be initiated by either Met-1 or Met-7 and interacts with Testis-specific protein 10. Testis-specific protein 10 is believed to be expressed as an autoantigen in autoimmune polyendocrine syndrome type I. Autoimmune polyendocrine syndrome type 1 (APS1) is a rare monogenic autosomal recessive disorder with autoimmune gonadal failure often being one of its features. is encoded by a gene located on human chromosome 11. Chromosome 11 houses over 1,400 genes and comprises nearly 4% of the human genome. Jervell and Lange-Nielsen syndrome, Jacobsen syndrome, Niemann-Pick disease, hereditary angioedema and Smith-Lemli-Opitz syndrome are associated with defects in genes that maps to chromosome 11.

REFERENCES

- Gawin, B., et al. 1999. A 7.5 Mb sequence-ready PAC contig and gene expression map of human chromosome 11p13-p14.1. *Genome Res.* 9: 1074-1086.
- Theinert, S.M., et al. 2005. Identification of the testis-specific protein 10 (TSGA10) as serologically defined tumour-associated antigen in primary cutaneous T-cell lymphoma. *Br. J. Dermatol.* 153: 639-641.
- Taylor, T.D., et al. 2006. Human chromosome 11 DNA sequence and analysis including novel gene identification. *Nature* 440: 497-500.
- Reimand, K., et al. 2008. Testis-expressed protein TSGA10 an auto-antigen in autoimmune polyendocrine syndrome type I. *Int. Immunol.* 20: 39-44.
- Akimoto, C., et al. 2010. Testis-specific protein on Y chromosome (TSPY) represses the activity of the androgen receptor in androgen-dependent testicular germ-cell tumors. *Proc. Natl. Acad. Sci. USA* 107: 19891-19896.
- Pleskacova, J., et al. 2010. Tumor risk in disorders of sex development. *Sex. Dev.* 4: 259-269.

CHROMOSOMAL LOCATION

Genetic locus: TSGA10IP (human) mapping to 11q13.1.

SOURCE

TSGA10IP (C-20) is an affinity purified goat polyclonal antibody raised against a peptide mapping at the C-terminus of TSGA10IP of human origin.

PRODUCT

Each vial contains 200 µg IgG in 1.0 ml of PBS with < 0.1% sodium azide and 0.1% gelatin.

Blocking peptide available for competition studies, sc-249101 P, (100 µg peptide in 0.5 ml PBS containing < 0.1% sodium azide and 0.2% BSA).

STORAGE

Store at 4° C, ****DO NOT FREEZE****. Stable for one year from the date of shipment. Non-hazardous. No MSDS required.

APPLICATIONS

TSGA10IP (C-20) is recommended for detection of TSGA10IP of human origin by Western Blotting (starting dilution 1:200, dilution range 1:100-1:1000), immunoprecipitation [1-2 µg per 100-500 µg of total protein (1 ml of cell lysate)], immunofluorescence (starting dilution 1:50, dilution range 1:50-1:500) and solid phase ELISA (starting dilution 1:30, dilution range 1:30-1:3000); non cross-reactive with TSGA10.

Suitable for use as control antibody for TSGA10IP siRNA (h): sc-96603, TSGA10IP shRNA Plasmid (h): sc-96603-SH and TSGA10IP shRNA (h) Lentiviral Particles: sc-96603-V.

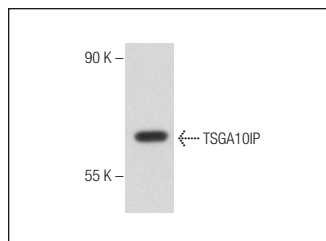
Molecular Weight of TSGA10IP: 61 kDa.

Positive Controls: Raji whole cell lysate: sc-364236 or Ramos cell lysate: sc-2216.

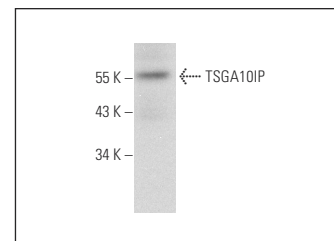
RECOMMENDED SECONDARY REAGENTS

To ensure optimal results, the following support (secondary) reagents are recommended: 1) Western Blotting: use donkey anti-goat IgG-HRP: sc-2020 (dilution range: 1:2000-1:100,000) or Cruz Marker™ compatible donkey anti-goat IgG-HRP: sc-2033 (dilution range: 1:2000-1:5000), Cruz Marker™ Molecular Weight Standards: sc-2035, TBS Blotto A Blocking Reagent: sc-2333 and Western Blotting Luminol Reagent: sc-2048. 2) Immunoprecipitation: use Protein A/G PLUS-Agarose: sc-2003 (0.5 ml agarose/2.0 ml). 3) Immunofluorescence: use donkey anti-goat IgG-FITC: sc-2024 (dilution range: 1:100-1:400) or donkey anti-goat IgG-TR: sc-2783 (dilution range: 1:100-1:400) with UltraCruz™ Mounting Medium: sc-24941.

DATA



TSGA10IP (C-20): sc-249101. Western blot analysis of TSGA10IP expression in Raji whole cell lysate.



TSGA10IP (C-20): sc-249101. Western blot analysis of TSGA10IP expression in Ramos whole cell lysate.

RESEARCH USE

For research use only, not for use in diagnostic procedures.

PROTOCOLS

See our web site at www.scbt.com or our catalog for detailed protocols and support products.