

VWC2L (E-12): sc-249302

BACKGROUND

VWC2L (von Willebrand factor C domain-containing protein 2-like) is a 222 amino acid secreted protein belonging to the Chordin family. VWC2L contains two VWFC domains and exists as three alternately spliced isoforms. The gene encoding VWC2L maps to human chromosome 2q34. As the second largest human chromosome, chromosome 2 makes up approximately 8% of the human genome and contains 237 million bases encoding over 1,400 genes. A number of genetic diseases are linked to genes on chromosome 2. Harlequin ichthyosis, a rare skin deformity, is associated with mutations in the ABCA12 gene. The lipid metabolic disorder sitosterolemia is associated with ABCG5 and ABCG8 gene defects. An extremely rare recessive genetic disorder, Alström syndrome, is related to mutations in the ALMS1 gene. Chromosome 2 contains a probable vestigial second centromere as well as vestigial telomeres, which gives credence to the hypothesis that human chromosome 2 formed as a result of an ancient fusion of two ancestral chromosomes, which are still present in modern day apes.

REFERENCES

1. Ijdo, J.W., et al. 1991. Origin of human chromosome 2: an ancestral telomere-telomere fusion. *Proc. Natl. Acad. Sci. USA* 88: 9051-9055.
2. Hillier, L.W., et al. 2005. Generation and annotation of the DNA sequences of human chromosomes 2 and 4. *Nature* 434: 724-731.
3. Thomas, A.C., et al. 2006. ABCA12 is the major harlequin ichthyosis gene. *J. Invest. Dermatol.* 126: 2408-2413.
4. Akiyama, M., et al. 2007. Compound heterozygous ABCA12 mutations including a novel nonsense mutation underlie harlequin ichthyosis. *Dermatology* 215: 155-159.
5. Marshall, J.D., et al. 2007. Alström syndrome. *Eur. J. Hum. Genet.* 15: 1193-1202.
6. Miwa, H., et al. 2009. A novel neural-specific BMP antagonist, Brorin-like, of the Chordin family. *FEBS Lett.* 583: 3643-3648.
7. Rooryck, C., et al. 2010. Array-CGH analysis of a cohort of 86 patients with oculoauriculovertebral spectrum. *Am. J. Med. Genet. A* 152A: 1984-1989.
8. You, Y.H., et al. 2010. Time-series gene expression profiles in AGS cells stimulated with *Helicobacter pylori*. *World J. Gastroenterol.* 16: 1385-1396.

CHROMOSOMAL LOCATION

Genetic locus: VWC2L (human) mapping to 2q34; Vwc2l (mouse) mapping to 1 C3.

SOURCE

VWC2L (E-12) is an affinity purified goat polyclonal antibody raised against a peptide mapping within an internal region of VWC2L of human origin.

STORAGE

Store at 4° C, ****DO NOT FREEZE****. Stable for one year from the date of shipment. Non-hazardous. No MSDS required.

PRODUCT

Each vial contains 200 µg IgG in 1.0 ml of PBS with < 0.1% sodium azide and 0.1% gelatin.

Blocking peptide available for competition studies, sc-249302 P, (100 µg peptide in 0.5 ml PBS containing < 0.1% sodium azide and 0.2% BSA).

APPLICATIONS

VWC2L (E-12) is recommended for detection of VWC2L of mouse, rat and human origin by Western Blotting (starting dilution 1:200, dilution range 1:100-1:1000), immunoprecipitation [1-2 µg per 100-500 µg of total protein (1 ml of cell lysate)], immunofluorescence (starting dilution 1:50, dilution range 1:50-1:500) and solid phase ELISA (starting dilution 1:30, dilution range 1:30-1:3000); non cross-reactive with VWC2.

VWC2L (E-12) is also recommended for detection of VWC2L in additional species, including avian.

Suitable for use as control antibody for VWC2L siRNA (m): sc-140681, VWC2L shRNA Plasmid (m): sc-140681-SH and VWC2L shRNA (m) Lentiviral Particles: sc-140681-V.

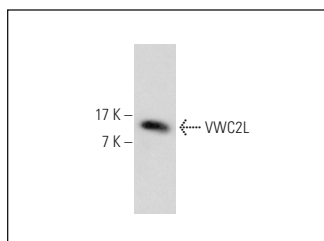
Molecular Weight of VWC2L isoforms 1/2/3: 25/19/14 kDa.

Positive Controls: HOS cell lysate: sc-2275.

RECOMMENDED SECONDARY REAGENTS

To ensure optimal results, the following support (secondary) reagents are recommended: 1) Western Blotting: use donkey anti-goat IgG-HRP: sc-2020 (dilution range: 1:2000-1:100,000) or Cruz Marker™ compatible donkey anti-goat IgG-HRP: sc-2033 (dilution range: 1:2000-1:5000), Cruz Marker™ Molecular Weight Standards: sc-2035, TBS Blotto A Blocking Reagent: sc-2333 and Western Blotting Luminol Reagent: sc-2048. 2) Immunoprecipitation: use Protein A/G PLUS-Agarose: sc-2003 (0.5 ml agarose/2.0 ml). 3) Immunofluorescence: use donkey anti-goat IgG-FITC: sc-2024 (dilution range: 1:100-1:400) or donkey anti-goat IgG-TR: sc-2783 (dilution range: 1:100-1:400) with UltraCruz™ Mounting Medium: sc-24941.

DATA



VWC2L (E-12): sc-249302. Western blot analysis of VWC2L expression in HOS whole cell lysate.

RESEARCH USE

For research use only, not for use in diagnostic procedures.