

# ZC3HAV1L (Q-16): sc-249388

## BACKGROUND

ZC3HAV1L (zinc finger CCCH-type antiviral protein 1-like) is a 296 amino acid protein that contains two C3H1-type zinc fingers. Existing as two alternatively spliced isoforms, the gene encoding ZC3HAV1L maps to human chromosome 7, which houses over 1,000 genes and comprises nearly 5% of the human genome. Chromosome 7 has been linked to Osteogenesis imperfecta, Pendred syndrome, Lissencephaly, Citrullinemia and Shwachman-Diamond syndrome. The deletion of a portion of the q arm of chromosome 7 is associated with Williams-Beuren syndrome, a condition characterized by mild mental retardation, an unusual comfirt and friendliness with strangers and an elfin appearance. Deletions of portions of the q arm of chromosome 7 are also seen in a number of myeloid disorders including cases of acute myelogenous leukemia and myelodysplasia.

## REFERENCES

1. Tsiouras, P., et al. 1983. Restriction fragment length polymorphism associated with the pro  $\alpha$  2(I) gene of human type I procollagen. Application to a family with an autosomal dominant form of osteogenesis imperfecta. *J. Clin. Invest.* 72: 1262-1267.
2. Liang, H., et al. 1998. Molecular anatomy of chromosome 7q deletions in myeloid neoplasms: evidence for multiple critical loci. *Proc. Natl. Acad. Sci. USA* 95: 3781-3785.
3. Iwasaki, S., et al. 2001. Long-term audiological feature in Pendred syndrome caused by PDS mutation. *Arch. Otolaryngol. Head Neck Surg.* 127: 705-708.
4. Osborne, L.R., et al. 2006. Williams-Beuren syndrome diagnosis using fluorescence *in situ* hybridization. *Methods Mol. Med.* 126: 113-128.
5. Reiner, O., et al. 2006. Lissencephaly 1 linking to multiple diseases: mental retardation, neurodegeneration, schizophrenia, male sterility, and more. *Neuromolecular. Med.* 8: 547-565.

## CHROMOSOMAL LOCATION

Genetic locus: ZC3HAV1L (human) mapping to 7q34; Zc3hav1l (mouse) mapping to 6 B1.

## SOURCE

ZC3HAV1L (Q-16) is an affinity purified goat polyclonal antibody raised against a peptide mapping within an internal region of ZC3HAV1L of mouse origin.

## PRODUCT

Each vial contains 200  $\mu$ g IgG in 1.0 ml of PBS with < 0.1% sodium azide and 0.1% gelatin.

Blocking peptide available for competition studies, sc-249388 P, (100  $\mu$ g peptide in 0.5 ml PBS containing < 0.1% sodium azide and 0.2% BSA).

## RESEARCH USE

For research use only, not for use in diagnostic procedures.

## APPLICATIONS

ZC3HAV1L (Q-16) is recommended for detection of ZC3HAV1L of mouse, rat and human origin by Western Blotting (starting dilution 1:200, dilution range 1:100-1:1000), immunoprecipitation [1-2  $\mu$ g per 100-500  $\mu$ g of total protein (1 ml of cell lysate)], immunofluorescence (starting dilution 1:50, dilution range 1:50-1:500) and solid phase ELISA (starting dilution 1:30, dilution range 1:30-1:3000).

Suitable for use as control antibody for ZC3HAV1L siRNA (h): sc-89735, ZC3HAV1L siRNA (m): sc-155469, ZC3HAV1L shRNA Plasmid (h): sc-89735-SH, ZC3HAV1L shRNA Plasmid (m): sc-155469-SH, ZC3HAV1L shRNA (h) Lentiviral Particles: sc-89735-V and ZC3HAV1L shRNA (m) Lentiviral Particles: sc-155469-V.

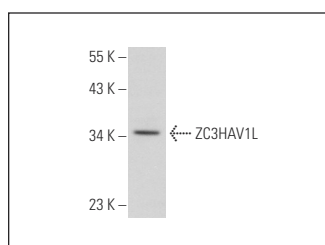
Molecular Weight of ZC3HAV1L isoforms 1/2: 33/24 kDa.

Positive Controls: Jurkat whole cell lysate: sc-2204.

## RECOMMENDED SECONDARY REAGENTS

To ensure optimal results, the following support (secondary) reagents are recommended: 1) Western Blotting: use donkey anti-goat IgG-HRP: sc-2020 (dilution range: 1:2000-1:100,000) or Cruz Marker™ compatible donkey anti-goat IgG-HRP: sc-2033 (dilution range: 1:2000-1:5000), Cruz Marker™ Molecular Weight Standards: sc-2035, TBS Blotto A Blocking Reagent: sc-2333 and Western Blotting Luminol Reagent: sc-2048. 2) Immunoprecipitation: use Protein A/G PLUS-Agarose: sc-2003 (0.5 ml agarose/2.0 ml). 3) Immunofluorescence: use donkey anti-goat IgG-FITC: sc-2024 (dilution range: 1:100-1:400) or donkey anti-goat IgG-TR: sc-2783 (dilution range: 1:100-1:400) with UltraCruz™ Mounting Medium: sc-24941.

## DATA



ZC3HAV1L (Q-16): sc-249388. Western blot analysis of ZC3HAV1L expression in Jurkat whole cell lysate.

## STORAGE

Store at 4° C, \*\*DO NOT FREEZE\*\*. Stable for one year from the date of shipment. Non-hazardous. No MSDS required.

## PROTOCOLS

See our web site at [www.scbt.com](http://www.scbt.com) or our catalog for detailed protocols and support products.