

# ZNF331 (S-16): sc-249525

## BACKGROUND

ZNF331 (zinc finger protein 331), also known as ZNF361 (zinc finger protein 361), ZNF463 (zinc finger protein 463) or RITA, is a 463 amino acid nuclear protein that may be involved in transcriptional regulation and spermatogenesis. Specific to the testis, ZNF331 contains 12 C<sub>2</sub>H<sub>2</sub>-type zinc fingers, one KRAB domain and belongs to the krueppel C<sub>2</sub>H<sub>2</sub>-type zinc-finger protein family. The gene that encodes ZNF331 consists of close to 60,000 bases and maps to human chromosome 19q13.42. Chromosome 19 consists of over 63 million bases, houses approximately 1,400 genes and is recognized for having the greatest gene density of the human chromosomes. It is the genetic home for a number of immunoglobulin (Ig) superfamily members, including the killer cell and leukocyte Ig-like receptors, a number of ICAMs, the CEACAM and PSG families and Fc receptors (FcRs).

## REFERENCES

- Rippe, V., Belge, G., Meiboom, M., Kazmierczak, B., Fusco, A. and Bullerdiek, J. 1999. A KRAB zinc finger protein gene is the potential target of 19q13 translocation in benign thyroid tumors. *Genes Chromosomes Cancer* 26: 229-236.
- Wang, L., Lin, S.H., Wu, W.G., Kemp, B.L., Walsh, G.L., Hong, W.K. and Mao, L. 2000. C-CAM1, a candidate tumor suppressor gene, is abnormally expressed in primary lung cancers. *Clin. Cancer Res.* 6: 2988-2993.
- Wu, H., Zhang, S., Qiu, W., Zhang, G., Xia, Q., Xiao, C., Huang, X., Huang, M., Agen, P., Fan, T., Yang, J. and Milunsky, A. 2001. Isolation, characterization, and mapping of a novel human KRAB zinc finger protein encoding gene ZNF463. *Biochim. Biophys. Acta* 1518: 190-193.
- Online Mendelian Inheritance in Man, OMIM™. 2001. Johns Hopkins University, Baltimore, MD. MIM Number: 606043. World Wide Web URL: <http://www.ncbi.nlm.nih.gov/omim/>
- Meiboom, M., Murua Escobar, H., Pentimalli, F., Fusco, A., Belge, G. and Bullerdiek, J. 2003. A 3.4-kbp transcript of ZNF331 is solely expressed in follicular thyroid adenomas. *Cytogenet. Genome Res.* 101: 113-117.
- Meiboom, M., Murua Escobar, H., Winkler, S., Nolte, I. and Bullerdiek, J. 2004. Molecular characterization and mapping of the canine KRAB zinc finger gene ZNF331. *Anim. Genet.* 35: 262-263.
- Le Meur, N., Martin, C., Saugier-Verber, P., Joly, G., Lemoine, F., Moiro, H., Rossi, A., Bachy, B., Cabot, A., Joly, P. and Frebourg, T. 2004. Complete germline deletion of the STK11 gene in a family with Peutz-Jeghers syndrome. *Eur. J. Hum. Genet.* 12: 415-418.

## CHROMOSOMAL LOCATION

Genetic locus: ZNF331 (human) mapping to 19q13.42.

## SOURCE

ZNF331 (S-16) is an affinity purified goat polyclonal antibody raised against a peptide mapping within an internal region of ZNF331 of human origin.

## RESEARCH USE

For research use only, not for use in diagnostic procedures.

## PRODUCT

Each vial contains 200 µg IgG in 1.0 ml of PBS with < 0.1% sodium azide and 0.1% gelatin.

Blocking peptide available for competition studies, sc-249525 P, (100 µg peptide in 0.5 ml PBS containing < 0.1% sodium azide and 0.2% BSA).

## APPLICATIONS

ZNF331 (S-16) is recommended for detection of ZNF331 of human origin by Western Blotting (starting dilution 1:200, dilution range 1:100-1:1000), immunoprecipitation [1-2 µg per 100-500 µg of total protein (1 ml of cell lysate)], immunofluorescence (starting dilution 1:50, dilution range 1:50-1:500) and solid phase ELISA (starting dilution 1:30, dilution range 1:30-1:3000).

Suitable for use as control antibody for ZNF331 siRNA (h): sc-97397, ZNF331 shRNA Plasmid (h): sc-97397-SH and ZNF331 shRNA (h) Lentiviral Particles: sc-97397-V.

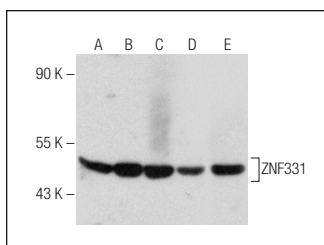
Molecular Weight of ZNF331: 54 kDa.

Positive Controls: HL-60 whole cell lysate: sc-2209, DU 145 cell lysate: sc-2268 or MCF7 whole cell lysate: sc-2206.

## RECOMMENDED SECONDARY REAGENTS

To ensure optimal results, the following support (secondary) reagents are recommended: 1) Western Blotting: use donkey anti-goat IgG-HRP: sc-2020 (dilution range: 1:2000-1:100,000) or Cruz Marker™ compatible donkey anti-goat IgG-HRP: sc-2033 (dilution range: 1:2000-1:5000), Cruz Marker™ Molecular Weight Standards: sc-2035, TBS Blotto A Blocking Reagent: sc-2333 and Western Blotting Luminol Reagent: sc-2048. 2) Immunoprecipitation: use Protein A/G PLUS-Agarose: sc-2003 (0.5 ml agarose/2.0 ml). 3) Immunofluorescence: use donkey anti-goat IgG-FITC: sc-2024 (dilution range: 1:100-1:400) or donkey anti-goat IgG-TR: sc-2783 (dilution range: 1:100-1:400) with UltraCruz™ Mounting Medium: sc-24941.

## DATA



ZNF331 (S-16): sc-249525. Western blot analysis of ZNF331 expression in MCF7 (A), DU 145 (B), HL-60 (C) and WI 38 (D) whole cell lysates and human kidney tissue extract (E).

## STORAGE

Store at 4° C, \*\*DO NOT FREEZE\*\*. Stable for one year from the date of shipment. Non-hazardous. No MSDS required.