

ZYG11A (D-20): sc-249864

BACKGROUND

ZYG11A (ZYG11 homolog A), also known as ZYG11, is a 759 amino acid protein that belongs to the ZYG11 family and contains 3 LRR (leucine-rich) repeats. Thought to participate in an E3 ubiquitin ligase complex, ZYG11A exists as two alternatively spliced isoforms that are encoded by a gene that maps to human chromosome 1p32.3. Human chromosome 1 spans 260 million base pairs, contains over 3,000 genes and comprises nearly 8% of the human genome. Chromosome 1 houses a large number of disease-associated genes, including those that are involved in familial adenomatous polyposis, Stickler syndrome, Parkinson's disease, Gaucher disease, schizophrenia and Usher syndrome. Aberrations in chromosome 1 are found in a variety of cancers, including head and neck cancer, malignant melanoma and multiple myeloma.

REFERENCES

1. Eudy, J.D., et al. 1998. Mutation of a gene encoding a protein with extracellular matrix motifs in Usher syndrome type IIa. *Science* 280: 1753-1757.
2. Tayebi, N., et al. 2001. Gaucher disease and parkinsonism: a phenotypic and genotypic characterization. *Mol. Genet. Metab.* 73: 313-321.
3. Plasilova, M., et al. 2004. Exclusion of an extracolonic disease modifier locus on chromosome 1p33-36 in a large Swiss familial adenomatous polyposis kindred. *Eur. J. Hum. Genet.* 12: 365-371.
4. Vasudevan, S., et al. 2007. The *Caenorhabditis elegans* cell-cycle regulator ZYG-11 defines a conserved family of CUL-2 complex components. *EMBO Rep.* 8: 279-286.
5. Betarbet, R., et al. 2008. Fas-associated factor 1 and Parkinson's disease. *Neurobiol. Dis.* 31: 309-315.
6. Holliday, E.G., et al. 2009. Strong evidence for a novel schizophrenia risk locus on chromosome 1p31.1 in homogeneous pedigrees from Tamil Nadu, India. *Am. J. Psychiatry* 166: 206-215.
7. Balcárková, J., et al. 2009. Gain of chromosome arm 1q in patients in relapse and progression of multiple myeloma. *Cancer Genet. Cytogenet.* 192: 68-72.
8. Yokoi, T., et al. 2009. Analysis of the vitreous membrane in a case of type 1 Stickler syndrome. *Graefes Arch. Clin. Exp. Ophthalmol.* 247: 715-718.

CHROMOSOMAL LOCATION

Genetic locus: Zyg11a (mouse) mapping to 4 C7.

SOURCE

ZYG11A (D-20) is an affinity purified goat polyclonal antibody raised against a peptide mapping within an internal region of ZYG11A of mouse origin.

PRODUCT

Each vial contains 200 µg IgG in 1.0 ml of PBS with < 0.1% sodium azide and 0.1% gelatin.

Blocking peptide available for competition studies, sc-249864 P, (100 µg peptide in 0.5 ml PBS containing < 0.1% sodium azide and 0.2% BSA).

APPLICATIONS

ZYG11A (D-20) is recommended for detection of ZYG11A of mouse and rat origin by Western Blotting (starting dilution 1:200, dilution range 1:100-1:1000), immunofluorescence (starting dilution 1:50, dilution range 1:50-1:500) and solid phase ELISA (starting dilution 1:30, dilution range 1:30-1:3000); non cross-reactive with ZYG11B or ZYG11BL.

Suitable for use as control antibody for ZYG11A siRNA (m): sc-155852, ZYG11A shRNA Plasmid (m): sc-155852-SH and ZYG11A shRNA (m) Lentiviral Particles: sc-155852-V.

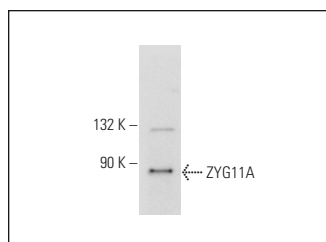
Molecular Weight of ZYG11A isoforms: 86/48 kDa.

Positive Controls: PC-12 cell lysate: sc-2250.

RECOMMENDED SECONDARY REAGENTS

To ensure optimal results, the following support (secondary) reagents are recommended: 1) Western Blotting: use donkey anti-goat IgG-HRP: sc-2020 (dilution range: 1:2000-1:100,000) or Cruz Marker™ compatible donkey anti-goat IgG-HRP: sc-2033 (dilution range: 1:2000-1:5000), Cruz Marker™ Molecular Weight Standards: sc-2035, TBS Blotto A Blocking Reagent: sc-2333 and Western Blotting Luminol Reagent: sc-2048. 2) Immunofluorescence: use donkey anti-goat IgG-FITC: sc-2024 (dilution range: 1:100-1:400) or donkey anti-goat IgG-TR: sc-2783 (dilution range: 1:100-1:400) with UltraCruz™ Mounting Medium: sc-24941.

DATA



ZYG11A (D-20): sc-249864. Western blot analysis of ZYG11A expression in PC-12 whole cell lysate.

STORAGE

Store at 4° C, ****DO NOT FREEZE****. Stable for one year from the date of shipment. Non-hazardous. No MSDS required.

RESEARCH USE

For research use only, not for use in diagnostic procedures.

PROTOCOLS

See our web site at www.scbt.com or our catalog for detailed protocols and support products.