

CLEC-10A (I-18): sc-25004

BACKGROUND

CLEC-10A (C-type lectin domain family 10, member A), also known as macrophage galactose and N-acetylgalactosamine-specific lectin (MGL), macrophage asialoglycoprotein-binding protein (M-ASGP-BP) or macrophage galactose/N-acetylgalactosamine-specific lectin, is a protein with galactose-binding activity and with sugar-binding specificity that is the same as that of the native lectin. CLEC-10A serves as a unique macrophage marker in mouse lung tissue due to its topographical site-dependent pattern of expression. Additionally, the most intense signal is observed in the extract from skin, suggesting that cells expressing this lectin are abundant in skin. CLEC-10A may also participate in the binding of the macrophages to tumor cells. Cells which stain positively for CLEC-10A are distributed in the connective tissue and in the interstice, particularly the dermis and subcutaneous layer of skin.

REFERENCES

- Oda, S., et al. 1989. Binding of activated macrophages to tumor cells through a macrophage lectin and its role in macrophage tumoricidal activity. *J. Biochem.* 105: 1040-1043.
- Li, M., et al. T. 1990. Molecular cloning and sequence analysis of cDNA encoding the macrophage lectin specific for galactose and N-acetylgalactosamine. *J. Biol. Chem.* 265: 11295-11298.
- Sato, M., et al. 1992. Molecular cloning and expression of cDNA encoding a galactose/N-acetylgalactosamine-specific lectin on mouse tumoricidal macrophages. *J. Biochem.* 111: 331-336.
- Kimura, T., et al. 1995. Calcium-dependent conformation of a mouse macrophage calcium-type lectin. Carbohydrate binding activity is stabilized by an antibody specific for a calcium-dependent epitope. *J. Biol. Chem.* 270: 16056-16062.
- Imai, Y., et al. 1995. Restricted expression of galactose/N-acetylgalactosamine-specific macrophage C-type lectin to connective tissue and to metastatic lesions in mouse lung. *Immunology* 86: 591-598.
- Mizuochi, S., et al. 1997. Unique tissue distribution of a mouse macrophage C-type lectin. *Glycobiology* 7: 137-146.

CHROMOSOMAL LOCATION

Genetic locus: *Clec10a* (mouse) mapping to 11 B3.

SOURCE

CLEC-10A (I-18) is an affinity purified goat polyclonal antibody raised against a peptide mapping at the N-terminus of CLEC-10A of mouse origin.

PRODUCT

Each vial contains 200 µg IgG in 1.0 ml of PBS with < 0.1% sodium azide and 0.1% gelatin.

Blocking peptide available for competition studies, sc-25004 P, (100 µg peptide in 0.5 ml PBS containing < 0.1% sodium azide and 0.2% BSA).

RESEARCH USE

For research use only, not for use in diagnostic procedures.

APPLICATIONS

CLEC-10A (I-18) is recommended for detection of CLEC-10A of mouse origin by Western Blotting (starting dilution 1:200, dilution range 1:100-1:1000), immunoprecipitation [1-2 µg per 100-500 µg of total protein (1 ml of cell lysate)], immunofluorescence (starting dilution 1:50, dilution range 1:50-1:500) and solid phase ELISA (starting dilution 1:30, dilution range 1:30-1:3000).

Suitable for use as control antibody for CLEC-10A siRNA (m): sc-72220, CLEC-10A shRNA Plasmid (m): sc-72220-SH and CLEC-10A shRNA (m) Lentiviral Particles: sc-72220-V.

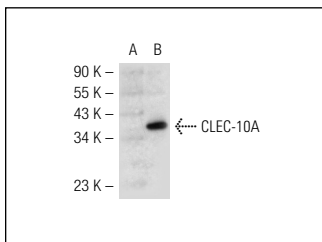
Molecular Weight of CLEC-10A: 42 kDa.

Positive Controls: CLEC-10A (m): 293T Lysate: sc-125612.

RECOMMENDED SECONDARY REAGENTS

To ensure optimal results, the following support (secondary) reagents are recommended: 1) Western Blotting: use donkey anti-goat IgG-HRP: sc-2020 (dilution range: 1:2000-1:100,000) or Cruz Marker™ compatible donkey anti-goat IgG-HRP: sc-2033 (dilution range: 1:2000-1:5000), Cruz Marker™ Molecular Weight Standards: sc-2035, TBS Blotto A Blocking Reagent: sc-2333 and Western Blotting Luminol Reagent: sc-2048. 2) Immunoprecipitation: use Protein A/G PLUS-Agarose: sc-2003 (0.5 ml agarose/2.0 ml). 3) Immunofluorescence: use donkey anti-goat IgG-FITC: sc-2024 (dilution range: 1:100-1:400) or donkey anti-goat IgG-TR: sc-2783 (dilution range: 1:100-1:400) with UltraCruz™ Mounting Medium: sc-24941.

DATA



CLEC-10A (I-18): sc-25004. Western blot analysis of CLEC-10A expression in non-transfected: sc-117752 (A) and mouse CLEC-10A transfected: sc-125612 (B) 293T whole cell lysates.

STORAGE

Store at 4° C, **DO NOT FREEZE**. Stable for one year from the date of shipment. Non-hazardous. No MSDS required.

MONOS
Satisfaction
Guaranteed

Try **CLEC-10A (ER-MP23): sc-56109**, our highly recommended monoclonal alternative to CLEC-10A (I-18).