

Mucin 1 (H-6): sc-25274

BACKGROUND

The mucins are a family of highly glycosylated, secreted proteins with a basic structure consisting of a variable number of tandem repeats (VNTRs) encoded by 60 base pairs (Mucin 1), 69 base pairs (Mucin 2) and 51 base pairs (Mucin 3). The number of repeats is highly polymorphic and varies among different alleles. Mucin 1 proteins are expressed as type I membrane proteins in addition to secreted forms. Mucin 1 is aberrantly expressed in epithelial tumors including breast carcinomas. Mucin 2 coats the epithelia of the intestines and airways and is associated with colonic tumors. Mucin 3 is a major component of various mucus gels and is broadly expressed in normal and tumor cells.

REFERENCES

1. Siddiqui, J., et al. 1988. Isolation and sequencing of a cDNA coding for the human DF3 breast carcinoma-associated antigen. *Proc. Natl. Acad. Sci. USA* 85: 2320-2323.
2. Lan, M.S., et al. 1990. Cloning and sequencing of a human pancreatic tumor mucin cDNA. *J. Biol. Chem.* 265: 15294-15299.
3. Gum, J.R., Jr., et al. 1992. The human MUC2 intestinal mucin has cysteine-rich subdomains located both upstream and downstream of its central repetitive region. *J. Biol. Chem.* 267: 21375-21383.

CHROMOSOMAL LOCATION

Genetic locus: MUC1 (human) mapping to 1q22.

SOURCE

Mucin 1 (H-6) is a mouse monoclonal antibody raised against amino acid 961-1255 mapping at the C-terminus of Mucin 1 of human origin.

PRODUCT

Each vial contains 200 µg IgG_{2a} kappa light chain in 1.0 ml of PBS with < 0.1% sodium azide and 0.1% gelatin.

APPLICATIONS

Mucin 1 (H-6) is recommended for detection of Mucin 1 of human origin by Western Blotting (starting dilution 1:100, dilution range 1:100-1:500), immunoprecipitation [1-2 µg per 100-500 µg of total protein (1 ml of cell lysate)], immunofluorescence (starting dilution 1:50, dilution range 1:50-1:500), immunohistochemistry (including paraffin-embedded sections) (starting dilution 1:50, dilution range 1:50-1:500) and solid phase ELISA (starting dilution 1:30, dilution range 1:30-1:3000).

Suitable for use as control antibody for Mucin 1 siRNA (h): sc-35985, Mucin 1 shRNA Plasmid (h): sc-35985-SH and Mucin 1 shRNA (h) Lentiviral Particles: sc-35985-V.

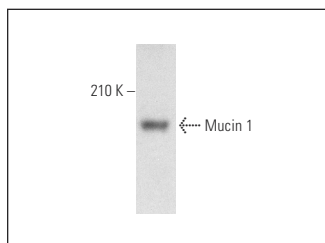
Molecular Weight of Mucin 1: 200 kDa.

Positive Controls: MCF7 whole cell lysate: sc-2206, DU 145 cell lysate: sc-2268 or BT-20 cell lysate: sc-2223.

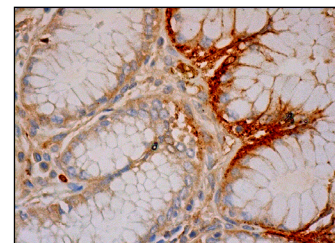
RECOMMENDED SUPPORT REAGENTS

To ensure optimal results, the following support reagents are recommended: 1) Western Blotting: use m-IgGκ BP-HRP: sc-516102 or m-IgGκ BP-HRP (Cruz Marker): sc-516102-CM (dilution range: 1:1000-1:10000), Cruz Marker™ Molecular Weight Standards: sc-2035, UltraCruz® Blocking Reagent: sc-516214 and Western Blotting Luminol Reagent: sc-2048. 2) Immunoprecipitation: use Protein A/G PLUS-Agarose: sc-2003 (0.5 ml agarose/2.0 ml). 3) Immunofluorescence: use m-IgGκ BP-FITC: sc-516140 or m-IgGκ BP-PE: sc-516141 (dilution range: 1:50-1:200) with UltraCruz® Mounting Medium: sc-24941 or UltraCruz® Hard-set Mounting Medium: sc-359850. 4) Immunohistochemistry: use m-IgGκ BP-HRP: sc-516102 with DAB, 50X: sc-24982 and Immunohistomount: sc-45086, or Organo/Limonene Mount: sc-45087.

DATA



Mucin 1 (H-6): sc-25274. Western blot analysis of Mucin 1 expression in DU 145 whole cell lysate.



Mucin 1 (H-6): sc-25274. Immunoperoxidase staining of formalin fixed, paraffin-embedded human upper stomach tissue showing membrane and cytoplasmic staining of glandular cells.

SELECT PRODUCT CITATIONS

1. Maria, O.M., et al. 2011. Matrigel improves functional properties of primary human salivary gland cells. *Tissue Eng. Part A* 17: 1229-1238.
2. Specht, S., et al. 2013. SPRR2A expression in cholangiocarcinoma increases local tumor invasiveness but prevents metastasis. *Clin. Exp. Metastasis* 30: 877-890.
3. Zelasko-Leon, D.C., et al. 2015. MUC1-targeted cancer cell photothermal ablation using bioinspired gold nanorods. *PLoS ONE* 10: e0128756.

STORAGE

Store at 4° C, **DO NOT FREEZE**. Stable for one year from the date of shipment. Non-hazardous. No MSDS required.

RESEARCH USE

For research use only, not for use in diagnostic procedures.

PROTOCOLS

See our web site at www.scbt.com for detailed protocols and support products.