

Sos 2 (G-7): sc-25350

BACKGROUND

The superfamily of GTP-binding proteins, of which Ras proteins are prototypes, has been implicated in a broad range of biological activities. Studies have identified a family of guanine nucleotide-releasing factors (GRFs) that activate Ras in mammalian cells and an "adapter" protein (Sem 5/GRB2) that appears to mediate the interaction of GRFs with activated receptor molecules. Ras-GRF p140 promotes nucleotide exchange on Ras p21s but not on other members of the Ras gene superfamily. In addition, three mammalian homologs of the *Drosophila* Ras-GRF, son of sevenless (Sos), have been described. These include two from mouse, mSos 1 and mSos 2, and one from human, hSos. Vav p95 has been reported to function as a GRF in activation of Ras by the T cell receptor and has been reported to have a domain similar to that of Dbl p115, which is a GRF specific for Cdc42Hs. Subsequent to activation, Ras appears to interact with Raf, thereby activating the MAP kinase phosphorylation pathway.

REFERENCES

1. Lowenstein, E.J., et al. 1992. The SH2 and SH3 domain-containing protein GRB2 links receptor tyrosine kinases to Ras signaling. *Cell* 40: 431-442.
2. Simon, M.A., et al. 1993. An SH3-SH2-SH3 protein is required for p21 Ras 1 activation and binds to sevenless and Sos proteins *in vitro*. *Cell* 73: 169-177.
3. Buday, L., et al. 1993. Epidermal growth factor regulates p21 Ras through the formation of a complex of receptor, GRB2 adaptor protein, and Sos nucleotide exchange factor. *Cell* 73: 611-620.
4. Egan, S.E., et al. 1993. Association of Sos Ras exchange protein with GRB2 is implicated in tyrosine kinase signal transduction and transformation. *Nature* 363: 45-51.
5. Zhang, X., et al. 1993. Normal and oncogenic p21 Ras proteins bind to the amino-terminal regulatory domain of c-Raf-1. *Nature* 364: 308-313.
6. Chardin, P., et al. 1993. Human Sos 1: a guanine nucleotide exchange factor for Ras that binds to GRB2. *Science* 260: 1338-1343.
7. Skolnik, E.Y., et al. 1993. The function of GRB2 in linking the Insulin receptor to Ras signaling pathways. *Science* 260: 1953-1955.

CHROMOSOMAL LOCATION

Genetic locus: SOS2 (human) mapping to 14q21.3.

SOURCE

Sos 2 (G-7) is a mouse monoclonal antibody raised against amino acids 1091-1170 of Sos 2 of human origin.

PRODUCT

Each vial contains 200 µg IgG_{2b} kappa light chain in 1.0 ml of PBS with < 0.1% sodium azide and 0.1% gelatin.

STORAGE

Store at 4° C, **DO NOT FREEZE**. Stable for one year from the date of shipment. Non-hazardous. No MSDS required.

APPLICATIONS

Sos 2 (G-7) is recommended for detection of Sos 2 of human origin by Western Blotting (starting dilution 1:100, dilution range 1:100-1:1,000), immunoprecipitation [1-2 µg per 100-500 µg of total protein (1 ml of cell lysate)], immunofluorescence (starting dilution 1:50, dilution range 1:50-1:500), immunohistochemistry (including paraffin-embedded sections) (starting dilution 1:50, dilution range 1:50-1:500) and solid phase ELISA (starting dilution 1:30, dilution range 1:30-1:3000).

Suitable for use as control antibody for Sos 2 siRNA (h): sc-36525, Sos 2 shRNA Plasmid (h): sc-36525-SH and Sos 2 shRNA (h) Lentiviral Particles: sc-36525-V.

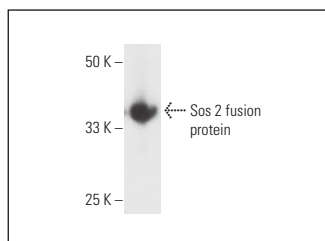
Molecular Weight of Sos 2: 155 kDa.

Positive Controls: A-431 whole cell lysate: sc-2201, K-562 whole cell lysate: sc-2203 or human pancreas extract: sc-363770.

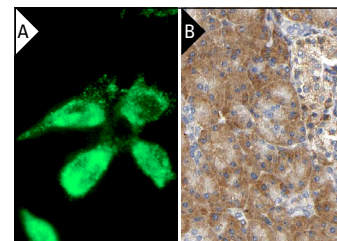
RECOMMENDED SUPPORT REAGENTS

To ensure optimal results, the following support reagents are recommended: 1) Western Blotting: use m-IgGκ BP-HRP: sc-516102 or m-IgGκ BP-HRP (Cruz Marker): sc-516102-CM (dilution range: 1:1000-1:10000), Cruz Marker™ Molecular Weight Standards: sc-2035, UltraCruz® Blocking Reagent: sc-516214 and Western Blotting Luminol Reagent: sc-2048. 2) Immunoprecipitation: use Protein A/G PLUS-Agarose: sc-2003 (0.5 ml agarose/2.0 ml). 3) Immunofluorescence: use m-IgGκ BP-FITC: sc-516140 or m-IgGκ BP-PE: sc-516141 (dilution range: 1:50-1:200) with UltraCruz® Mounting Medium: sc-24941 or UltraCruz® Hard-set Mounting Medium: sc-359850. 4) Immunohistochemistry: use m-IgGκ BP-HRP: sc-516102 with DAB, 50X: sc-24982 and Immunohistomount: sc-45086, or Organo/Limonene Mount: sc-45087.

DATA



Sos 2 (G-7): sc-25350. Western blot analysis of human recombinant Sos 2 fusion protein.



Sos 2 (G-7): sc-25350. Immunofluorescence staining of methanol-fixed K-562 cells showing cytoplasmic localization (A). Immunoperoxidase staining of formalin fixed, paraffin-embedded human pancreas tissue showing cytoplasmic staining of exocrine pancreas and islet cells. Kindly provided by The Swedish Human Protein Atlas (HPA) program (B).

RESEARCH USE

For research use only, not for use in diagnostic procedures.

PROTOCOLS

See our web site at www.scbt.com for detailed protocols and support products.