

Tec (H-90): sc-25427

BACKGROUND

The Tec family of non-receptor tyrosine kinases is composed of six proteins designated Tec, Emt (also known as Itk or Tsk), Btk (previously known as Atk, BPK or Emb), Bmx, Txk (also known as Rlk) and Dsrc28C. All members of the family contain SH3 and SH2 domains and, with the exception of Txk and Dsrc28C, also contain a pleckstrin homology (PH) and a Tec homology (TH) domain in their amino-termini. Four alternatively spliced forms of Tec are found to be expressed broadly in cells of hematopoietic lineage and hepatocytes. The Emt gene product associates with CD28 and becomes activated subsequent to CD28 ligation. Btk is necessary for proper B cell development, and mutations in the gene encoding Btk have been associated with families suffering from X-linked agammaglobulinemia, also referred to as Bruton's disease. The Bmx protein shares a high degree of homology with Btk and seems to be expressed at highest levels in the heart. Txk expression is T cell-specific, while expression of the *Drosophila* Tec homolog, Dsrc28C, is developmentally regulated.

REFERENCES

1. Yamada, N., et al. 1993. Structure and expression of novel protein tyrosine kinases, Emb and Emt, in hematopoietic cells. *Biochem. Biophys. Res. Commun.* 192: 231-240.
2. Thomas, J.D., et al. 1993. Colocalization of X-linked agammaglobulinemia and X-linked immunodeficiency genes. *Science* 261: 355-358.

CHROMOSOMAL LOCATION

Genetic locus: TEC (human) mapping to 4p12; Tec (mouse) mapping to 5 C3.2.

SOURCE

Tec (H-90) is a rabbit polyclonal antibody raised against amino acids 111-200 mapping near the N-terminus of Tec of human origin.

PRODUCT

Each vial contains 200 µg IgG in 1.0 ml of PBS with < 0.1% sodium azide and 0.1% gelatin.

APPLICATIONS

Tec (H-90) is recommended for detection of Tec of mouse, rat and human origin by Western Blotting (starting dilution 1:200, dilution range 1:100-1:1000), immunoprecipitation [1-2 µg per 100-500 µg of total protein (1 ml of cell lysate)], immunofluorescence (starting dilution 1:50, dilution range 1:50-1:500) and solid phase ELISA (starting dilution 1:30, dilution range 1:30-1:3000).

Tec (H-90) is also recommended for detection of Tec in additional species, including equine, canine, bovine and porcine.

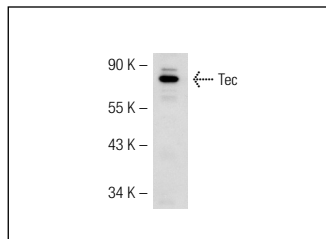
Suitable for use as control antibody for Tec siRNA (h): sc-36633, Tec siRNA (m): sc-36634, Tec shRNA Plasmid (h): sc-36633-SH, Tec shRNA Plasmid (m): sc-36634-SH, Tec shRNA (h) Lentiviral Particles: sc-36633-V and Tec shRNA (m) Lentiviral Particles: sc-36634-V.

Molecular Weight of Tec: 59 kDa.

RECOMMENDED SECONDARY REAGENTS

To ensure optimal results, the following support (secondary) reagents are recommended: 1) Western Blotting: use goat anti-rabbit IgG-HRP: sc-2004 (dilution range: 1:2000-1:100,000) or Cruz Marker™ compatible goat anti-rabbit IgG-HRP: sc-2030 (dilution range: 1:2000-1:5000), Cruz Marker™ Molecular Weight Standards: sc-2035, TBS Blotto A Blocking Reagent: sc-2333 and Western Blotting Luminol Reagent: sc-2048. 2) Immunoprecipitation: use Protein A/G PLUS-Agarose: sc-2003 (0.5 ml agarose/2.0 ml). 3) Immunofluorescence: use goat anti-rabbit IgG-FITC: sc-2012 (dilution range: 1:100-1:400) or goat anti-rabbit IgG-TR: sc-2780 (dilution range: 1:100-1:400) with UltraCruz™ Mounting Medium: sc-24941.

DATA



Tec (H-90): sc-25427. Western blot analysis of Tec expression in 293T whole cell lysate.

STORAGE

Store at 4° C, ****DO NOT FREEZE****. Stable for one year from the date of shipment. Non-hazardous. No MSDS required

RESEARCH USE

For research use only, not for use in diagnostic procedures.

PROTOCOLS

See our web site at www.scbt.com or our catalog for detailed protocols and support products.

MONOS
Satisfaction
Guaranteed

Try **Tec (G-5): sc-365533**, our highly recommended monoclonal alternative to Tec (H-90).