

EphA8 (H-70): sc-25460

BACKGROUND

The Eph subfamily represents the largest group of receptor protein tyrosine kinases identified to date. While the biological activities of these receptors have yet to be determined, there is increasing evidence that they are involved in central nervous system function and in development. The Eph subfamily receptors of human origin (and their murine/avian homologs) include EphA1 (Eph), EphA2 (Eck), EphA3 (Hek4), EphA4 (Hek8), EphA5 (Hek7), EphA6 (Hek12), EphA7 (Hek11/MDK1), EphA8 (Hek3), EphB1 (Hek6), EphB2 (Hek5), EphB3 (Cek10, Hek2), EphB4 (Htk), EphB5 (Hek9) and EphB6 (Mep). Ligands for Eph receptors include ephrin-A4 (LERK-4) which binds EphA3 and EphB1. Ephrin-A2 (ELF-1) has been described as the ligand for EphA4, ephrin-A3 (Ehk1-L) as the ligand for EphA5 and ephrin-B2 (Htk-L) as the ligand for EphB4 (Htk).

REFERENCES

1. Beckmann, M.P., et al. 1994. Molecular characterization of a family of ligands for Eph-related tyrosine kinase receptors. *EMBO J.* 13: 3757-3762.
2. Cheng, H.J., et al. 1994. Identification and cloning of ELF-1, a developmentally expressed ligand for the Mek4 and Sek receptor tyrosine kinases. *Cell* 79: 157-168.
3. Ciossek, T., et al. 1995. Identification of alternatively spliced mRNAs encoding variants of MDK1, a novel receptor tyrosine kinase expressed in the murine nervous system. *Oncogene* 10: 97-108.
4. Kozlosky, C.J., et al. 1995. Ligands for the receptor tyrosine kinases Hek and Elk: isolation of cDNAs encoding a family of proteins. *Oncogene* 10: 299-306.
5. Fox, G.M., et al. 1995. DNA cloning and tissue distribution of five human Eph-like receptor protein-tyrosine kinases. *Oncogene* 10: 897-905.
6. Valenzuela, D.M., et al. 1995. Identification of full length and truncated forms of Ehk3, a novel member of the Eph receptor tyrosine kinase family. *Oncogene* 10: 1573-1580.
7. Bennett, B.D., et al. 1995. Molecular cloning of a ligand for the Eph-related receptor protein-tyrosine kinase Htk. *Proc. Natl. Acad. Sci. USA* 92: 1866-1870.

CHROMOSOMAL LOCATION

Genetic locus: EPHA8 (human) mapping to 1p36.12; EphA8 (mouse) mapping to 4 D3.

SOURCE

EphA8 (H-70) is a rabbit polyclonal antibody raised against amino acids 341-410 of EphA8 of human origin.

PRODUCT

Each vial contains 200 µg IgG in 1.0 ml of PBS with < 0.1% sodium azide and 0.1% gelatin.

STORAGE

Store at 4° C, ****DO NOT FREEZE****. Stable for one year from the date of shipment. Non-hazardous. No MSDS required.

APPLICATIONS

EphA8 (H-70) is recommended for detection of EphA8 of mouse, rat and human origin by Western Blotting (starting dilution 1:200, dilution range 1:100-1:1000), immunoprecipitation [1-2 µg per 100-500 µg of total protein (1 ml of cell lysate)], immunofluorescence (starting dilution 1:50, dilution range 1:50-1:500), immunohistochemistry (including paraffin-embedded sections) (starting dilution 1:50, dilution range 1:50-1:500) and solid phase ELISA (starting dilution 1:30, dilution range 1:30-1:3000).

EphA8 (H-70) is also recommended for detection of EphA8 in additional species, including equine, canine, bovine and porcine.

Suitable for use as control antibody for EphA8 siRNA (h): sc-39943, EphA8 siRNA (m): sc-39944, EphA8 shRNA Plasmid (h): sc-39943-SH, EphA8 shRNA Plasmid (m): sc-39944-SH, EphA8 shRNA (h) Lentiviral Particles: sc-39943-V and EphA8 shRNA (m) Lentiviral Particles: sc-39944-V.

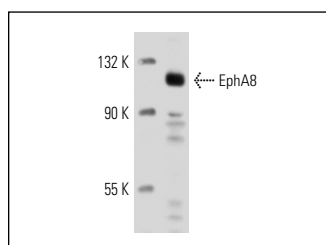
Molecular Weight of EphA8: 126 kDa.

Positive Controls: IMR-32 cell lysate: sc-2409.

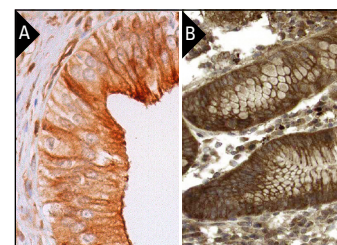
RECOMMENDED SECONDARY REAGENTS

To ensure optimal results, the following support (secondary) reagents are recommended: 1) Western Blotting: use goat anti-rabbit IgG-HRP: sc-2004 (dilution range: 1:2000-1:100,000) or Cruz Marker™ compatible goat anti-rabbit IgG-HRP: sc-2030 (dilution range: 1:2000-1:5000), Cruz Marker™ Molecular Weight Standards: sc-2035, TBS Blotto A Blocking Reagent: sc-2333 and Western Blotting Luminol Reagent: sc-2048. 2) Immunoprecipitation: use Protein A/G PLUS-Agarose: sc-2003 (0.5 ml agarose/2.0 ml). 3) Immunofluorescence: use goat anti-rabbit IgG-FITC: sc-2012 (dilution range: 1:100-1:400) or goat anti-rabbit IgG-TR: sc-2780 (dilution range: 1:100-1:400) with UltraCruz™ Mounting Medium: sc-24941. 4) Immunohistochemistry: use ImmunoCruz™: sc-2051 or ABC: sc-2018 rabbit IgG Staining Systems.

DATA



EphA8 (H-70): sc-25460. Western blot analysis of EphA8 expression in IMR-32 whole cell lysate.



EphA8 (H-70): sc-25460. Immunoperoxidase staining of formalin fixed, paraffin-embedded human gall bladder tissue showing membrane and cytoplasmic staining of glandular cells (A). Immunoperoxidase staining of formalin fixed, paraffin-embedded human stomach tissue showing membrane and cytoplasmic staining of glandular cells (B). Kindly provided by The Swedish Human Protein Atlas (HPA) program.

RESEARCH USE

For research use only, not for use in diagnostic procedures.