

MRP6 (H-70): sc-25505

BACKGROUND

The two members of the large family of ABC transporters known to confer multidrug resistance in human cancer cells are the Mdr-1 P-glycoprotein and the multidrug-resistance protein MRP1. MRP1 is an integral membrane protein that contains an MDR-like core, an N-terminal membrane-bound region and a cytoplasmic linker, and it is expressed in various cerebral cells, as well as in lung, testis and peripheral blood. The MRP gene family also includes MRP2, which is alternatively designated cMOAT (for canalicular multispecific organic anion transporter), and MRP3, which are both conjugate export pumps expressed predominantly in hepatocytes. MRP2 localizes exclusively to the apical membrane and is constitutively expressed at a high level in normal liver cells. Conversely, MRP3 localizes to the basolateral membrane where it also mediates the transport of the organic anion S-(2,4-dinitrophenyl-) glutathione toward the basolateral side of the membrane. MRP3 is normally expressed at comparatively lower levels than MRP2 and increases only when secretion across the apical membrane by MRP2 is impaired. MRP6 protein is highly expressed in liver and kidney, whereas MRP4 and MRP5 are detected in various tissues yet at much lower levels of expression.

CHROMOSOMAL LOCATION

Genetic locus: ABCC6 (human) mapping to 16p13.11; Abcc6 (mouse) mapping to 7 B4.

SOURCE

MRP6 (H-70) is a rabbit polyclonal antibody raised against amino acids 1-70 of MRP6 of human origin.

PRODUCT

Each vial contains 200 µg IgG in 1.0 ml of PBS with < 0.1% sodium azide and 0.1% gelatin.

STORAGE

Store at 4° C, ****DO NOT FREEZE****. Stable for one year from the date of shipment. Non-hazardous. No MSDS required.

APPLICATIONS

MRP6 (H-70) is recommended for detection of MRP6 of mouse, rat and human origin by Western Blotting (starting dilution 1:200, dilution range 1:100-1:1000), immunoprecipitation [1-2 µg per 100-500 µg of total protein (1 ml of cell lysate)], immunofluorescence (starting dilution 1:50, dilution range 1:50-1:500) and solid phase ELISA (starting dilution 1:30, dilution range 1:30-1:3000).

Suitable for use as control antibody for MRP6 siRNA (h): sc-35967, MRP6 siRNA (m): sc-35968, MRP6 shRNA Plasmid (h): sc-35967-SH, MRP6 shRNA Plasmid (m): sc-35968-SH, MRP6 shRNA (h) Lentiviral Particles: sc-35967-V and MRP6 shRNA (m) Lentiviral Particles: sc-35968-V.

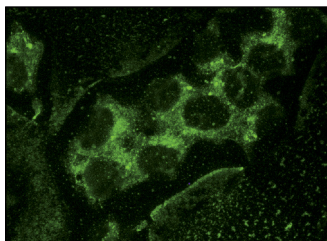
Molecular Weight of MRP6: 170 kDa.

Positive Controls: Hep G2 cell lysate: sc-2227, rat liver extract: sc-2395 or A549 cell lysate: sc-2413.

RECOMMENDED SECONDARY REAGENTS

To ensure optimal results, the following support (secondary) reagents are recommended: 1) Western Blotting: use goat anti-rabbit IgG-HRP: sc-2004 (dilution range: 1:2000-1:100,000) or Cruz Marker™ compatible goat anti-rabbit IgG-HRP: sc-2030 (dilution range: 1:2000-1:5000), Cruz Marker™ Molecular Weight Standards: sc-2035, TBS Blotto A Blocking Reagent: sc-2333 and Western Blotting Luminol Reagent: sc-2048. 2) Immunoprecipitation: use Protein A/G PLUS-Agarose: sc-2003 (0.5 ml agarose/ 2.0 ml). 3) Immunofluorescence: use goat anti-rabbit IgG-FITC: sc-2012 (dilution range: 1:100-1:400) or goat anti-rabbit IgG-TR: sc-2780 (dilution range: 1:100-1:400) with UltraCruz™ Mounting Medium: sc-24941.

DATA



MRP6 (H-70): sc-25505. Immunofluorescence staining of methanol-fixed Hep G2 cells showing membrane localization.

SELECT PRODUCT CITATIONS

1. Martin, L., et al. 2011. A mouse model of β -thalassemia shows a liver-specific down-regulation of Abcc6 expression. *Am. J. Pathol.* 178: 774-783.

RESEARCH USE

For research use only, not for use in diagnostic procedures.

PROTOCOLS

See our web site at www.scbt.com or our catalog for detailed protocols and support products.

MONOS
Satisfaction
Guaranteed

Try **MRP6 (M611-7): sc-57528**, our highly recommended monoclonal alternative to MRP6 (H-70).