

AP-180 (M-105): sc-25552

BACKGROUND

Clathrin-coated pits and vesicles are assembled for receptor-mediated endocytosis through interaction with Clathrin associated protein complexes. Vesicle transport is mediated from the *trans*-Golgi network by the adapter complex AP-1 and from the plasma membrane by the AP-2 complex. The AP-1 and AP-2 adapter protein complexes consist of Clathrin binding Adaptin proteins. AP-180, also known as SNAP91 (synaptosomal-associated protein, 91kDa homolog (mouse)) or CALM, is a 907 amino acid cell membrane protein that contains an ENTH (epsin N-terminal homology) domain. AP-180 binds to Clathrin triskelia via its N-terminal clathrin binding site, inducing assembly into 60-70 nm coats. Existing as three alternatively spliced isoforms, the gene encoding AP-180 maps to human chromosome 6q14.2 and mouse chromosome 9 E3.1.

REFERENCES

1. Robinson, M.S. 1989. Cloning of cDNAs encoding two related 100 kDa coated vesicle proteins (α -Adaptins). *J. Cell Biol.* 108: 833-842.
2. Kirchhausen, T., et al. 1989. Structural and functional division into two domains of the large (100 to 115 kDa) chains of the Clathrin-associated protein complex AP-2. *Proc. Natl. Acad. Sci. USA* 86: 2612-2616.
3. Robinson, M.S. 1990. Cloning and expression of γ -Adaptin, a component of Clathrin-coated vesicles associated with the Golgi apparatus. *J. Cell Biol.* 111: 2319-2326.
4. Ponnambalam, S., et al. 1990. Conservation and diversity in families of coated vesicle adaptins. *J. Biol. Chem.* 265: 4814-4820.
5. Morris, S.A., et al. 1993. Clathrin assembly protein AP180: primary structure, domain organization and identification of a Clathrin binding site. *EMBO J.* 12: 667-675.
6. Ball, C.L., et al. 1995. Expression and localization of α -Adaptin isoforms. *J. Cell Sci.* 108: 2865-2875.
7. Mellman, I. 1996. Endocytosis and molecular sorting. *Annu. Rev. Cell Dev. Biol.* 12: 575-625.

CHROMOSOMAL LOCATION

Genetic locus: SNAP91 (human) mapping to 6q14.2; Snap91 (mouse) mapping to 9 E3.1.

SOURCE

AP-180 (M-105) is a rabbit polyclonal antibody raised against amino acids 797-901 of AP-180 of mouse origin.

PRODUCT

Each vial contains 200 μ g IgG in 1.0 ml of PBS with < 0.1% sodium azide and 0.1% gelatin.

STORAGE

Store at 4° C, ****DO NOT FREEZE****. Stable for one year from the date of shipment. Non-hazardous. No MSDS required.

APPLICATIONS

AP-180 (M-105) is recommended for detection of AP-180 of mouse, rat and human origin by Western Blotting (starting dilution 1:200, dilution range 1:100-1:1000), immunoprecipitation [1-2 μ g per 100-500 μ g of total protein (1 ml of cell lysate)], immunofluorescence (starting dilution 1:50, dilution range 1:50-1:500), immunohistochemistry (including paraffin-embedded sections) (starting dilution 1:50, dilution range 1:50-1:500) and solid phase ELISA (starting dilution 1:30, dilution range 1:30-1:3000).

AP-180 (M-105) is also recommended for detection of AP-180 in additional species, including equine, canine, bovine and porcine.

Suitable for use as control antibody for AP-180 siRNA (h): sc-29698, AP-180 siRNA (m): sc-29699, AP-180 shRNA Plasmid (h): sc-29698-SH, AP-180 shRNA Plasmid (m): sc-29699-SH, AP-180 shRNA (h) Lentiviral Particles: sc-29698-V and AP-180 shRNA (m) Lentiviral Particles: sc-29699-V.

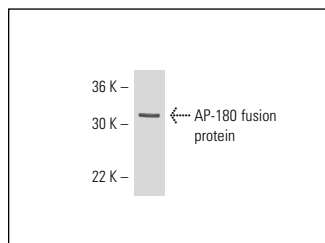
Molecular Weight of AP-180: 180 kDa.

Positive Controls: HeLa whole cell lysate: sc-2200, mouse brain extract: sc-2253 or IMR-32 cell lysate: sc-2409.

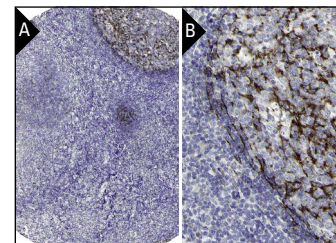
RECOMMENDED SECONDARY REAGENTS

To ensure optimal results, the following support (secondary) reagents are recommended: 1) Western Blotting: use goat anti-rabbit IgG-HRP: sc-2004 (dilution range: 1:2000-1:100,000) or Cruz Marker™ compatible goat anti-rabbit IgG-HRP: sc-2030 (dilution range: 1:2000-1:5000), Cruz Marker™ Molecular Weight Standards: sc-2035, TBS Blotto A Blocking Reagent: sc-2333 and Western Blotting Luminol Reagent: sc-2048. 2) Immunoprecipitation: use Protein A/G PLUS-Agarose: sc-2003 (0.5 ml agarose/2.0 ml). 3) Immunofluorescence: use goat anti-rabbit IgG-FITC: sc-2012 (dilution range: 1:100-1:400) or goat anti-rabbit IgG-TR: sc-2780 (dilution range: 1:100-1:400) with UltraCruz™ Mounting Medium: sc-24941. 4) Immunohistochemistry: use ImmunoCruz™: sc-2051 or ABC: sc-2018 rabbit IgG Staining Systems.

DATA



AP-180 (M-105): sc-25552. Western blot analysis of mouse recombinant AP-180 fusion protein.



AP-180 (M-105): sc-25552. Immunoperoxidase staining of formalin fixed, paraffin-embedded human tonsil tissue showing membrane staining of follicle cells at low (A) and high (B) magnification. Kindly provided by The Swedish Human Protein Atlas (HPA) program.

RESEARCH USE

For research use only, not for use in diagnostic procedures.