

plexin-C1 (H-300): sc-25643

BACKGROUND

Plexins are a family of large, transmembrane receptors for multiple classes of semaphorins in vertebrates. Plexins are widely expressed, and regions of their extracellular domain are homologous to both scatter factor receptors and semaphorin domains. Plexins may act as semaphorin receptors alone or in combination with neuropilins. Plexins are divided into four subfamilies designated plexin-A, -B, -C and -D. *Drosophila* plexin-A is a receptor for class I semaphorins and controls motor and axon guidance. Plexin-A3 mediates cell-repelling cues. Plexins-B and -C are receptors for SEMA4 and SEMA7, respectively.

REFERENCES

1. Artigiani, S., et al. 1992. Plexins, semaphorins, and scatter factor receptors: a common root for cell guidance signals? *IUBMB Life* 48: 477-478.
2. Kolodkin, A.L., et al. 1993. The semaphorin genes encode a family of transmembrane and secreted growth cone guidance molecules. *Cell* 75: 1389-1399.

CHROMOSOMAL LOCATION

Genetic locus: PLXNC1 (human) mapping to 12q22; Plxnc1 (mouse) mapping to 10 C2.

SOURCE

plexin-C1 (H-300) is a rabbit polyclonal antibody raised against amino acids 4-300 mapping near the N-terminus of plexin-C1 of human origin.

PRODUCT

Each vial contains 200 µg IgG in 1.0 ml of PBS with < 0.1% sodium azide and 0.1% gelatin.

RESEARCH USE

For research use only, not for use in diagnostic procedures.

APPLICATIONS

plexin-C1 (H-300) is recommended for detection of plexin-C1 of mouse, rat and human origin by Western Blotting (starting dilution 1:200, dilution range 1:100-1:1000), immunoprecipitation [1-2 µg per 100-500 µg of total protein (1 ml of cell lysate)], immunofluorescence (starting dilution 1:50, dilution range 1:50-1:500) and solid phase ELISA (starting dilution 1:30, dilution range 1:30-1:3000).

plexin-C1 (H-300) is also recommended for detection of plexin-C1 in additional species, including porcine.

Suitable for use as control antibody for plexin-C1 siRNA (h): sc-44026, plexin-C1 siRNAs (m): sc-42179, plexin-C1 shRNA Plasmid (h): sc-44026-SH, plexin-C1 shRNA Plasmids (m): sc-42179-SH, plexin-C1 shRNA (h) Lentiviral Particles: sc-44026-V and plexin-C1 shRNAs (m) Lentiviral Particles: sc-42179-V.

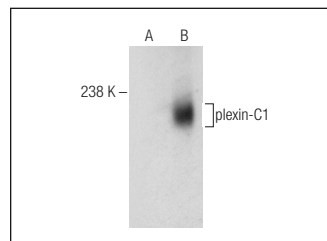
Molecular Weight of plexin-C1: 176 kDa.

Positive Controls: plexin-C1 (h2): 293T Lysate: sc-372114.

RECOMMENDED SECONDARY REAGENTS

To ensure optimal results, the following support (secondary) reagents are recommended: 1) Western Blotting: use goat anti-rabbit IgG-HRP: sc-2004 (dilution range: 1:2000-1:100,000) or Cruz Marker™ compatible goat anti-rabbit IgG-HRP: sc-2030 (dilution range: 1:2000-1:5000), Cruz Marker™ Molecular Weight Standards: sc-2035, TBS Blotto A Blocking Reagent: sc-2333 and Western Blotting Luminol Reagent: sc-2048. 2) Immunoprecipitation: use Protein A/G PLUS-Agarose: sc-2003 (0.5 ml agarose/2.0 ml). 3) Immunofluorescence: use goat anti-rabbit IgG-FITC: sc-2012 (dilution range: 1:100-1:400) or goat anti-rabbit IgG-TR: sc-2780 (dilution range: 1:100-1:400) with UltraCruz™ Mounting Medium: sc-24941.

DATA



plexin-C1 (H-300): sc-25643. Western blot analysis of plexin-C1 expression in non-transfected: sc-117752 (A) and human plexin-C1 transfected: sc-372114 (B) 293T whole cell lysates.

STORAGE

Store at 4° C, ****DO NOT FREEZE****. Stable for one year from the date of shipment. Non-hazardous. No MSDS required.

PROTOCOLS

See our web site at www.scbt.com or our catalog for detailed protocols and support products.



Try **plexin-C1 (B-8): sc-390216**, our highly recommended monoclonal alternative to plexin-C1 (H-300).