

MAGI-1 (H-70): sc-25663

BACKGROUND

The membrane-associated guanylate kinase (MAGUK) proteins are concentrated at the membrane-cytoskeletal interface where they facilitate the assembly of multiprotein complexes on the inner surface of the plasma membrane. Three protein-protein interaction modules characteristically define MAGUK related proteins: the PDZ domain, the SH3 domain and the guanylate kinase (GuK) domain. The closely related MAGUK proteins, MAGI-1, MAGI-2 and MAGI-3 (membrane associated guanylate kinase inverted-1 and 2), likewise contain the GuK domain and five PDZ domains; however, the SH3 domain is replaced with a WW domain. The transcripts of MAGI-1 are alternatively spliced to produce three distinct proteins having unique carboxy-terminals. Two variants, MAGI-1a and MAGI-1b, are associated with the membrane and cytosolic fractions and are primarily expressed in the brain. The third isoform, MAGI-1c, encodes for a nuclear localization signal that localizes MAGI-1c to the nucleus, and it is primarily expressed in the liver and kidney. MAGI-2 and MAGI-3 are localized to the plasma membrane, and they contribute to protein scaffolding by associating with the protein phosphatase PTEN.

CHROMOSOMAL LOCATION

Genetic locus: MAGI1 (human) mapping to 3p14.1; Magi1 (mouse) mapping to 6 D1.

SOURCE

MAGI-1 (H-70) is a rabbit polyclonal antibody raised against amino acids 1-70 of MAGI-1 of human origin.

PRODUCT

Each vial contains 200 µg IgG in 1.0 ml of PBS with < 0.1% sodium azide and 0.1% gelatin.

STORAGE

Store at 4° C, ****DO NOT FREEZE****. Stable for one year from the date of shipment. Non-hazardous. No MSDS required.

APPLICATIONS

MAGI-1 (H-70) is recommended for detection of MAGI-1 of mouse, rat and human origin by Western Blotting (starting dilution 1:200, dilution range 1:100-1:1000), immunoprecipitation [1-2 µg per 100-500 µg of total protein (1 ml of cell lysate)], immunofluorescence (starting dilution 1:50, dilution range 1:50-1:500), immunohistochemistry (including paraffin-embedded sections) (starting dilution 1:50, dilution range 1:50-1:500) and solid phase ELISA (starting dilution 1:30, dilution range 1:30-1:3000).

MAGI-1 (H-70) is also recommended for detection of MAGI-1 in additional species, including equine, bovine and porcine.

Suitable for use as control antibody for MAGI-1 siRNA (h): sc-41999, MAGI-1 siRNA (m): sc-42000, MAGI-1 shRNA Plasmid (h): sc-41999-SH, MAGI-1 shRNA Plasmid (m): sc-42000-SH, MAGI-1 shRNA (h) Lentiviral Particles: sc-41999-V and MAGI-1 shRNA (m) Lentiviral Particles: sc-42000-V.

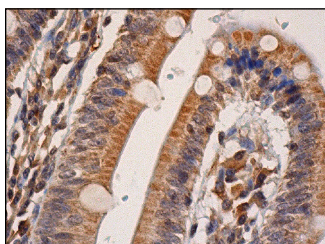
Molecular Weight of MAGI-1: 165 kDa.

Positive Controls: PC-12 cell lysate: sc-2250.

RECOMMENDED SECONDARY REAGENTS

To ensure optimal results, the following support (secondary) reagents are recommended: 1) Western Blotting: use goat anti-rabbit IgG-HRP: sc-2004 (dilution range: 1:2000-1:100,000) or Cruz Marker™ compatible goat anti-rabbit IgG-HRP: sc-2030 (dilution range: 1:2000-1:5000), Cruz Marker™ Molecular Weight Standards: sc-2035, TBS Blotto A Blocking Reagent: sc-2333 and Western Blotting Luminol Reagent: sc-2048. 2) Immunoprecipitation: use Protein A/G PLUS-Agarose: sc-2003 (0.5 ml agarose/2.0 ml). 3) Immunofluorescence: use goat anti-rabbit IgG-FITC: sc-2012 (dilution range: 1:100-1:400) or goat anti-rabbit IgG-TR: sc-2780 (dilution range: 1:100-1:400) with UltraCruz™ Mounting Medium: sc-24941. 4) Immunohistochemistry: use ImmunoCruz™: sc-2051 or ABC: sc-2018 rabbit IgG Staining Systems.

DATA



MAGI-1 (H-70): sc-25663. Immunoperoxidase staining of formalin fixed, paraffin-embedded human small intestine tissue showing cytoplasmic staining of glandular cells.

SELECT PRODUCT CITATIONS

- Xu, Z., et al. 2008. MAGI-1, a candidate stereociliary scaffolding protein, associates with the tip-link component cadherin-23. *J. Neurosci.* 28: 11269-11276.

RESEARCH USE

For research use only, not for use in diagnostic procedures.

PROTOCOLS

See our web site at www.scbt.com or our catalog for detailed protocols and support products.

MONOS
Satisfaction
Guaranteed

Try **MAGI-1 (SS-5): sc-100326**, our highly recommended monoclonal alternative to MAGI-1 (H-70).