

claudin-15 (H-60): sc-25712

BACKGROUND

The claudin superfamily consists of many structurally related proteins in humans. These proteins are important structural and functional components of tight junctions in paracellular transport. Claudins are located in both epithelial and endothelial cells in all tight junction-bearing tissues. Three classes of proteins are known to localize to tight junctions, including the claudins, Occludin and junction adhesion molecule (JAM). Claudins, which consist of four trans-membrane domains and two extracellular loops, make up tight junction strands. Claudin expression is often highly restricted to specific regions of different tissues and may have an important role in transcellular transport through tight junctions. Claudin-15 is a 228 amino acid multi-pass membrane protein that belongs to the claudin family and plays an important role in cell-adhesion activity and tight junction-specific events.

REFERENCES

1. Fanning, A.S., et al. 1999. Transmembrane proteins in the tight junction barrier. *J. Am. Soc. Nephrol.* 10: 1337-1345.
2. Fujita, K., et al. 2000. *Clostridium perfringens* enterotoxin binds to the second extracellular loop of claudin-3, a tight junction integral membrane protein. *FEBS Lett.* 476: 258-261.
3. Heiskala, M., et al. 2001. The roles of claudin superfamily proteins in paracellular transport. *Traffic* 2: 93-98.
4. Nishiyama, R., et al. 2001. Interleukin-2 receptor β subunit-dependent and -independent regulation of intestinal epithelial tight junctions. *J. Biol. Chem.* 276: 35571-35580.
5. Anderson, J.M. 2001. Molecular structure of tight junctions and their role in epithelial transport. *News Physiol. Sci.* 16: 126-130.
6. Rahner, C., et al. 2001. Heterogeneity in expression and subcellular localization of claudins 2, 3, 4 and 5 in the rat liver, pancreas and gut. *Gastroenterology* 120: 411-422.

CHROMOSOMAL LOCATION

Genetic locus: CLDN15 (human) mapping to 7q22.1; Cldn15 (mouse) mapping to 5 G2.

SOURCE

claudin-15 (H-60) is a rabbit polyclonal antibody raised against amino acids 1-60 mapping at the N-terminus of claudin-15 of human origin.

PRODUCT

Each vial contains 200 μ g IgG in 1.0 ml of PBS with < 0.1% sodium azide and 0.1% gelatin.

STORAGE

Store at 4° C, ****DO NOT FREEZE****. Stable for one year from the date of shipment. Non-hazardous. No MSDS required.

RESEARCH USE

For research use only, not for use in diagnostic procedures.

APPLICATIONS

claudin-15 (H-60) is recommended for detection of claudin-15 of mouse, rat and human origin by Western Blotting (starting dilution 1:200, dilution range 1:100-1:1000), immunoprecipitation [1-2 μ g per 100-500 μ g of total protein (1 ml of cell lysate)], immunofluorescence (starting dilution 1:50, dilution range 1:50-1:500) and solid phase ELISA (starting dilution 1:30, dilution range 1:30-1:3000).

claudin-15 (H-60) is also recommended for detection of claudin-15 in additional species, including equine, canine and porcine.

Suitable for use as control antibody for claudin-15 siRNA (h): sc-43056, claudin-15 siRNA (m): sc-43057, claudin-15 shRNA Plasmid (h): sc-43056-SH, claudin-15 shRNA Plasmid (m): sc-43057-SH, claudin-15 shRNA (h) Lentiviral Particles: sc-43056-V and claudin-15 shRNA (m) Lentiviral Particles: sc-43057-V.

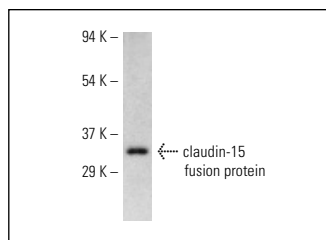
Molecular Weight of claudin-15: 23 kDa.

Positive Controls: mouse thymus extract: sc-2406.

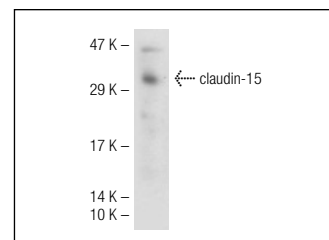
RECOMMENDED SECONDARY REAGENTS

To ensure optimal results, the following support (secondary) reagents are recommended: 1) Western Blotting: use goat anti-rabbit IgG-HRP: sc-2004 (dilution range: 1:2000-1:100,000) or Cruz Marker™ compatible goat anti-rabbit IgG-HRP: sc-2030 (dilution range: 1:2000-1:5000), Cruz Marker™ Molecular Weight Standards: sc-2035, TBS Blotto A Blocking Reagent: sc-2333 and Western Blotting Luminol Reagent: sc-2048. 2) Immunoprecipitation: use Protein A/G PLUS-Agarose: sc-2003 (0.5 ml agarose/2.0 ml). 3) Immunofluorescence: use goat anti-rabbit IgG-FITC: sc-2012 (dilution range: 1:100-1:400) or goat anti-rabbit IgG-TR: sc-2780 (dilution range: 1:100-1:400) with UltraCruz™ Mounting Medium: sc-24941.

DATA



claudin-15 (H-60): sc-25712. Western blot analysis of human recombinant claudin-15 fusion protein.



claudin-15 (H-60): sc-25712. Western blot analysis of claudin-15 expression in mouse thymus tissue extract.

SELECT PRODUCT CITATIONS

1. Wongdee, K., et al. 2008. Osteoblasts express claudins and tight junction-associated proteins. *Histochem. Cell Biol.* 130: 79-90.
2. Charoenphandhu, N., et al. 2009. Two-step stimulation of intestinal Ca^{2+} absorption during lactation by long-term prolactin exposure and suckling-induced prolactin surge. *Am. J. Physiol. Endocrinol. Metab.* 297: E609-E619.