

P-Selectin (H-150): sc-25771

BACKGROUND

Selectins, also designated CD62 antigens, comprise a family of carbohydrate-binding proteins involved in mediating cellular interactions with leukocytes. L-Selectin (also designated LECAM-1 or CD62L) is expressed on the majority of B and naive T cells and on most monocytes, neutrophils and eosinophils. L-Selectin interacts with specific carbohydrates expressed by activated endothelial cells. P-Selectin (also designated GMP-140 or CD62P), expressed on activated platelets and endothelial cells, a3/18/2004nd E-Selectin (also designated ELMA-1 or CD62E), expressed on endothelial cells, exhibit overlapping ligand specificities. Both recognize sialyl-Le^x as a ligand and bind to specific carbohydrates on neutrophils and monocytes.

REFERENCES

1. Varki, A. 1994. Selectin ligands. *Proc. Natl. Acad. Sci. USA* 91: 7390-7397.
2. Tedder, T.F., et al. 1995. The selectins: vascular adhesion molecules. *FASEB J.* 10: 866-873.
3. Lasky, L.A. 1995. Selectin-carbohydrate interactions and the initiation of the inflammatory response. *Annu. Rev. Biochem.* 64: 113-139.
4. Pavalko, R.M., et al. 1995. The cytoplasmic domain of L-Selectin interacts with cytoskeletal proteins via α -actinin: receptor positioning in microvilli does not require interaction with α -actinin. *J. Cell Biol.* 129: 1155-1164.
5. Rosen, S.D. and Bertozzi, C.R. 1996. Two selectins converge on sulphate. *Leukocyte adhesion. Curr. Biol.* 6: 261-264.
6. McEver, R.P., et al. 1996. Leukocyte trafficking mediated by selectin-carbohydrate interactions. *J. Biol. Chem.* 270: 11025-11028.
7. Diacovo, T.G., et al. 1996. Platelet-mediated lymphocyte delivery to high endothelial venules. *Science* 273: 252-255.
8. Frenette, P.S., et al. 1996. Susceptibility to infection and altered hematopoiesis in mice deficient in both P and E-Selectins. *Cell* 84: 563-574.

CHROMOSOMAL LOCATION

Genetic locus: SELP (human) mapping to 1q24.2; Selp (mouse) mapping to 1 H2.2.

SOURCE

P-Selectin (H-150) is a rabbit polyclonal antibody raised against amino acids 651-800 of P-Selectin of human origin.

PRODUCT

Each vial contains 200 μ g IgG in 1.0 ml of PBS with < 0.1% sodium azide and 0.1% gelatin.

STORAGE

Store at 4° C, ****DO NOT FREEZE****. Stable for one year from the date of shipment. Non-hazardous. No MSDS required.

APPLICATIONS

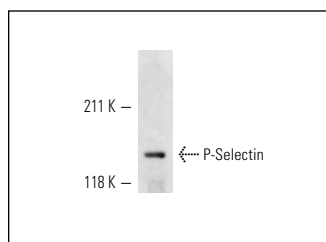
P-Selectin (H-150) is recommended for detection of P-Selectin of mouse, rat and human origin by Western Blotting (starting dilution 1:200, dilution range 1:100-1:1000), immunoprecipitation [1-2 μ g per 100-500 μ g of total protein (1 ml of cell lysate)], immunofluorescence (starting dilution 1:50, dilution range 1:50-1:500) and solid phase ELISA (starting dilution 1:30, dilution range 1:30-1:3000).

Suitable for use as control antibody for P-Selectin siRNA (h): sc-29421, P-Selectin siRNA (m): sc-36136, P-Selectin shRNA Plasmid (h): sc-29421-SH, P-Selectin shRNA Plasmid (m): sc-36136-SH, P-Selectin shRNA (h) Lentiviral Particles: sc-29421-V and P-Selectin shRNA (m) Lentiviral Particles: sc-36136-V.

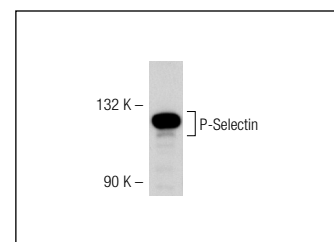
Molecular Weight of P-Selectin: 140 kDa.

Positive Controls: WEHI-231 whole cell lysate: sc-2213, mouse placenta extract: sc-364247 or human platelet whole cell lysate: sc-363773.

DATA



P-Selectin (H-150): sc-25771. Western blot analysis of P-Selectin expression in mouse placenta tissue extract.



P-Selectin (H-150): sc-25771. Western blot analysis of P-Selectin expression in human platelet whole cell lysate.

SELECT PRODUCT CITATIONS

1. Arum, C.J., et al. 2010. Cancer immunoediting from immunosurveillance to tumor escape in microvillus-formed niche: a study of syngeneic orthotopic rat bladder cancer model in comparison with human bladder cancer. *Neoplasia* 12: 434-442.

RESEARCH USE

For research use only, not for use in diagnostic procedures.

PROTOCOLS

See our web site at www.scbt.com or our catalog for detailed protocols and support products.



Try **P-Selectin (CTB201): sc-8419** or **P-Selectin (H-2): sc-271267**, our highly recommended monoclonal alternatives to P-Selectin (H-150). Also, for AC, HRP, FITC, PE, Alexa Fluor® 488 and Alexa Fluor® 647 conjugates, see **P-Selectin (CTB201): sc-8419**.