

# C4 $\beta$ (H-300): sc-25816

## BACKGROUND

The complement component proteins C3, C4 and C5 are potent anaphylatoxins that are released during complement activation, a system of ligand-surface protein interactions specific to cells of hematopoietic lineage. These proteins belong to the  $\alpha_2$ -Macroglobulin family, but retain distinctive features including an anaphylatoxin domain and a netrin (NTR) domain. The human C4 gene is polymorphic at two loci, C4A and C4B, mapping to chromosome 6p21.3. C4A expresses the Rodgers (Rg) blood group Ag, while C4B expresses the Chido (Ch) blood group Ag. C4 is expressed as a precursor that is cleaved into  $\alpha$ ,  $\beta$  and  $\gamma$  chains, all of which are non-identical cleavage products. The  $\alpha$  chain of C4 may be cleaved to produce an acidic isotype, C4a, which reacts with amino groups, and a basic isotype, C4b, which reacts with hydroxyl groups. Deficiency in the C4 gene is associated with autoimmune or immune complex disorders, such as systemic lupus erythematosus.

## REFERENCES

- Hugli, T.E. 1984. Structure and function of the anaphylatoxins. Springer Semin. Immunopathol. 7: 193-219.
- Yu, C.Y., et al. 1986. Structural basis of the polymorphism of human complement components C4A and C4B: gene size, reactivity and antigenicity. EMBO J. 5: 2873-2881.

## CHROMOSOMAL LOCATION

Genetic locus: C4A/C4B (human) mapping to 6p21.33; C4a/C4b (mouse) mapping to 17 B1.

## SOURCE

C4 $\beta$  (H-300) is a rabbit polyclonal antibody raised against amino acids 376-675 of C4 of human origin.

## PRODUCT

Each vial contains 200  $\mu$ g IgG in 1.0 ml of PBS with < 0.1% sodium azide and 0.1% gelatin.

## APPLICATIONS

C4 $\beta$  (H-300) is recommended for detection of C4 precursor and C4 $\beta$  chain of mouse, rat and human origin by Western Blotting (starting dilution 1:200, dilution range 1:100-1:1000), immunoprecipitation [1-2  $\mu$ g per 100-500  $\mu$ g of total protein (1 ml of cell lysate)], immunofluorescence (starting dilution 1:50, dilution range 1:50-1:500), immunohistochemistry (including paraffin-embedded sections) (starting dilution 1:50, dilution range 1:50-1:500) and solid phase ELISA (starting dilution 1:30, dilution range 1:30-1:3000).

Suitable for use as control antibody for C4 siRNA (h): sc-42844, C4 siRNA (m): sc-42845, C4 shRNA Plasmid (h): sc-42844-SH, C4 shRNA Plasmid (m): sc-42845-SH, C4 shRNA (h) Lentiviral Particles: sc-42844-V and C4 shRNA (m) Lentiviral Particles: sc-42845-V.

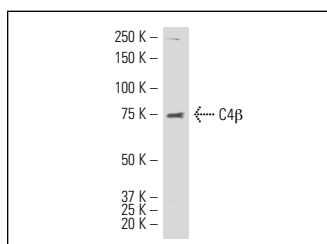
Molecular Weight of C4 $\beta$ : 73 kDa.

Positive Controls: Hep G2 cell lysate: sc-2227 or mouse liver extract: sc-2256.

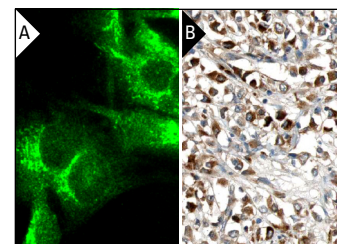
## RECOMMENDED SECONDARY REAGENTS

To ensure optimal results, the following support (secondary) reagents are recommended: 1) Western Blotting: use goat anti-rabbit IgG-HRP: sc-2004 (dilution range: 1:2000-1:100,000) or Cruz Marker™ compatible goat anti-rabbit IgG-HRP: sc-2030 (dilution range: 1:2000-1:5000), Cruz Marker™ Molecular Weight Standards: sc-2035, TBS Blotto A Blocking Reagent: sc-2333 and Western Blotting Luminol Reagent: sc-2048. 2) Immunoprecipitation: use Protein A/G PLUS-Agarose: sc-2003 (0.5 ml agarose/2.0 ml). 3) Immunofluorescence: use goat anti-rabbit IgG-FITC: sc-2012 (dilution range: 1:100-1:400) or goat anti-rabbit IgG-TR: sc-2780 (dilution range: 1:100-1:400) with UltraCruz™ Mounting Medium: sc-24941. 4) Immunohistochemistry: use ImmunoCruz™: sc-2051 or ABC: sc-2018 rabbit IgG Staining Systems.

## DATA



C4 $\beta$  (H-300): sc-25816. Western blot analysis of C4 $\beta$  expression in mouse liver tissue extract.



C4 $\beta$  (H-300): sc-25816. Immunofluorescence staining of formalin-fixed Hep G2 cells showing cytoplasmic localization (A). Immunoperoxidase staining of formalin fixed, paraffin-embedded human breast cancer tissue showing cytoplasmic staining of tumor cells at high magnification. Kindly provided by The Swedish Human Protein Atlas (HPA) program (B).

## STORAGE

Store at 4° C, \*\*DO NOT FREEZE\*\*. Stable for one year from the date of shipment. Non-hazardous. No MSDS required.

## RESEARCH USE

For research use only, not for use in diagnostic procedures.

## PROTOCOLS

See our web site at [www.scbt.com](http://www.scbt.com) or our catalog for detailed protocols and support products.


 MONOS  
Satisfaction  
Guaranteed

Try **C4 $\alpha$  (C-2): sc-271181** or **C4 $\beta$  (D-12): sc-74524**, our highly recommended monoclonal alternatives to C4 $\beta$  (H-300).