

C4 γ (H-291): sc-25817

BACKGROUND

The complement component proteins C3, C4 and C5 are potent anaphylatoxins that are released during complement activation, a system of ligand-surface protein interactions specific to cells of hematopoietic lineage. These proteins belong to the α_2 -Macroglobulin family, but retain distinctive features including an anaphylatoxin domain and a netrin (NTR) domain. The human C4 gene is polymorphic at two loci, C4A and C4B, mapping to chromosome 6p21.33. C4A expresses the Rodgers (Rg) blood group Ag, while C4B expresses the Chido (Ch) blood group Ag. C4 is expressed as a precursor that is cleaved into α , β and γ chains, all of which are non-identical cleavage products. The α chain of C4 may be cleaved to produce an acidic isotype, C4a, which reacts with amino groups, and a basic isotype, C4b, which reacts with hydroxyl groups. Deficiency in the C4 gene is associated with autoimmune or immune complex disorders, such as systemic lupus erythematosus.

CHROMOSOMAL LOCATION

Genetic locus: C4B/C4A (human) mapping to 6p21.33; C4b/C4a (mouse) mapping to 17 B1.

SOURCE

C4 γ (H-291) is a rabbit polyclonal antibody raised against amino acids 1454-1744 of C4 of human origin.

PRODUCT

Each vial contains 200 μ g IgG in 1.0 ml of PBS with < 0.1% sodium azide and 0.1% gelatin.

STORAGE

Store at 4° C, **DO NOT FREEZE**. Stable for one year from the date of shipment. Non-hazardous. No MSDS required.

RESEARCH USE

For research use only, not for use in diagnostic procedures.

APPLICATIONS

C4 γ (H-291) is recommended for detection of C4 precursor and C4 γ chain of mouse, rat and human origin by Western Blotting (starting dilution 1:200, dilution range 1:100-1:1000), immunoprecipitation [1-2 μ g per 100-500 μ g of total protein (1 ml of cell lysate)], immunofluorescence (starting dilution 1:50, dilution range 1:50-1:500) and solid phase ELISA (starting dilution 1:30, dilution range 1:30-1:3000).

C4 γ (H-291) is also recommended for detection of C4 precursor and C4 γ chain in additional species, including equine, bovine and porcine.

Suitable for use as control antibody for C4 siRNA (h): sc-42844, C4 siRNA (m): sc-42845, C4 shRNA Plasmid (h): sc-42844-SH, C4 shRNA Plasmid (m): sc-42845-SH, C4 shRNA (h) Lentiviral Particles: sc-42844-V and C4 shRNA (m) Lentiviral Particles: sc-42845-V.

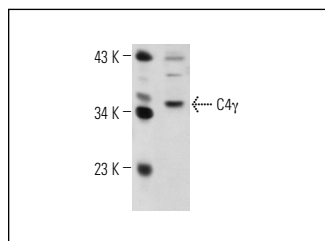
Molecular Weight of C4 γ : 33 kDa.

Positive Controls: J774.A1 cell lysate: sc-3802 or A549 cell lysate: sc-2413.

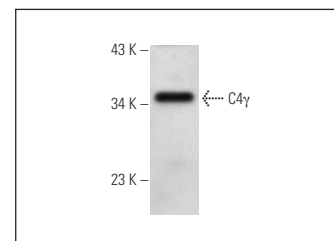
RECOMMENDED SECONDARY REAGENTS

To ensure optimal results, the following support (secondary) reagents are recommended: 1) Western Blotting: use goat anti-rabbit IgG-HRP: sc-2004 (dilution range: 1:2000-1:100,000) or Cruz Marker[™] compatible goat anti-rabbit IgG-HRP: sc-2030 (dilution range: 1:2000-1:5000), Cruz Marker[™] Molecular Weight Standards: sc-2035, TBS Blotto A Blocking Reagent: sc-2333 and Western Blotting Luminol Reagent: sc-2048. 2) Immunoprecipitation: use Protein A/G PLUS-Agarose: sc-2003 (0.5 ml agarose/ 2.0 ml). 3) Immunofluorescence: use goat anti-rabbit IgG-FITC: sc-2012 (dilution range: 1:100-1:400) or goat anti-rabbit IgG-TR: sc-2780 (dilution range: 1:100-1:400) with UltraCruz[™] Mounting Medium: sc-24941.

DATA



C4 γ (H-291): sc-25817. Western blot analysis of C4 γ expression in A549 whole cell lysate.



C4 γ (H-291): sc-25817. Western blot analysis of C4 γ expression in J774.A1 whole cell lysate.

SELECT PRODUCT CITATIONS

1. Zhang, H., et al. 2011. Complement component C4A and apolipoprotein A-I in plasmas as biomarkers of the severe, early-onset preeclampsia. *Mol. Biosyst.* 7: 2470-2479.

PROTOCOLS

See our web site at www.scbt.com or our catalog for detailed protocols and support products.



Try **C4 α (C-2): sc-271181**, our highly recommended monoclonal alternative to C4 γ (H-291).