

# PAK6 (N-20): sc-25975

## BACKGROUND

The p21(CDKN1A)-activated kinases (PAKs) are serine/threonine protein kinases that bind to activated small GTPases, including Cdc42 and Rac, and influence transcription, cell morphology (cytoskeleton rearrangement), motility and apoptosis. PAK family members contain an amino-terminal Cdc42/Rac interactive binding (CRIB) domain and a carboxyl-terminal kinase domain. PAK6 co-translocates into the nucleus with androgen receptor, which is a steroid hormone-dependent transcription factor that is important for male sexual differentiation and development, in response to androgen. PAK6 transcripts are present at high levels in brain and testis, with lower levels in multiple tissues including prostate and breast. The human PAK6 gene maps to chromosome 15q15.1.

## CHROMOSOMAL LOCATION

Genetic locus: PAK6 (human) mapping to 15q15.1; Pak6 (mouse) mapping to 2 E5.

## SOURCE

PAK6 (N-20) is an affinity purified goat polyclonal antibody raised against a peptide mapping near the N-terminus of PAK6 of human origin.

## PRODUCT

Each vial contains 200 µg IgG in 1.0 ml of PBS with < 0.1% sodium azide and 0.1% gelatin.

Blocking peptide available for competition studies, sc-25975 P, (100 µg peptide in 0.5 ml PBS containing < 0.1% sodium azide and 0.2% BSA).

## STORAGE

Store at 4° C, **\*\*DO NOT FREEZE\*\***. Stable for one year from the date of shipment. Non-hazardous. No MSDS required.

## APPLICATIONS

PAK6 (N-20) is recommended for detection of PAK6 of mouse, rat and human origin by Western Blotting (starting dilution 1:200, dilution range 1:100-1:1000), immunoprecipitation [1-2 µg per 100-500 µg of total protein (1 ml of cell lysate)], immunofluorescence (starting dilution 1:50, dilution range 1:50-1:500), immunohistochemistry (including paraffin-embedded sections) (starting dilution 1:50, dilution range 1:50-1:500) and solid phase ELISA (starting dilution 1:30, dilution range 1:30-1:3000).

PAK6 (N-20) is also recommended for detection of PAK6 in additional species, including equine, canine, bovine, porcine and avian.

Suitable for use as control antibody for PAK6 siRNA (h): sc-39063, PAK6 siRNA (m): sc-44879, PAK6 shRNA Plasmid (h): sc-39063-SH, PAK6 shRNA Plasmid (m): sc-44879-SH, PAK6 shRNA (h) Lentiviral Particles: sc-39063-V and PAK6 shRNA (m) Lentiviral Particles: sc-44879-V.

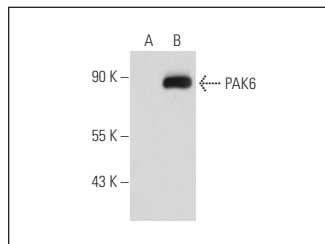
Molecular Weight of PAK6: 75 kDa.

Positive Controls: PAK6 (h4): 293 Lysate: sc-158808 or SK-N-MC cell lysate: sc-2237.

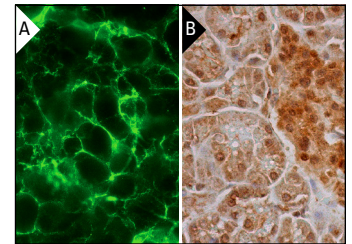
## RECOMMENDED SECONDARY REAGENTS

To ensure optimal results, the following support (secondary) reagents are recommended: 1) Western Blotting: use donkey anti-goat IgG-HRP: sc-2020 (dilution range: 1:2000-1:100,000) or Cruz Marker™ compatible donkey anti-goat IgG-HRP: sc-2033 (dilution range: 1:2000-1:5000), Cruz Marker™ Molecular Weight Standards: sc-2035, TBS Blotto A Blocking Reagent: sc-2333 and Western Blotting Luminol Reagent: sc-2048. 2) Immunoprecipitation: use Protein A/G PLUS-Agarose: sc-2003 (0.5 ml agarose/2.0 ml). 3) Immunofluorescence: use donkey anti-goat IgG-FITC: sc-2024 (dilution range: 1:100-1:400) or donkey anti-goat IgG-TR: sc-2783 (dilution range: 1:100-1:400) with UltraCruz™ Mounting Medium: sc-24941. 4) Immunohistochemistry: use ImmunoCruz™: sc-2053 or ABC: sc-2023 goat IgG Staining Systems.

## DATA



PAK6 (N-20): sc-25975. Western blot analysis of PAK6 expression in non-transfected: sc-117752 (A) and human PAK6 transfected: sc-158808 (B) 293T whole cell lysates.



PAK6 (N-20): sc-25975. Immunofluorescence staining of methanol-fixed human PAK6 transfected HEK 293T cells (A). Immunoperoxidase staining of formalin fixed, paraffin-embedded human pancreas tissue showing cytoplasmic and nuclear staining of exocrine glandular cells and Islets of Langerhans (B).

## SELECT PRODUCT CITATIONS

- Zhou, H., et al. 2005. Integrin engagement differentially modulates epithelial cell motility by RhoA/ROCK and PAK1. *J. Biol. Chem.* 280: 10624-10635.

## RESEARCH USE

For research use only, not for use in diagnostic procedures.

## PROTOCOLS

See our web site at [www.scbt.com](http://www.scbt.com) or our catalog for detailed protocols and support products.


 MONOS  
Satisfaction  
Guaranteed

Try **PAK6 (H-6): sc-393075** or **PAK6 (C-2): sc-393102**, our highly recommended monoclonal alternatives to PAK6 (N-20).