

# ADAM22 (T-19): sc-25999

## BACKGROUND

The ADAM (a disintegrin and metalloprotease) protein family, which includes over 30 membrane-anchored, glycosylated, Zn<sup>2+</sup> dependent proteases, plays a role in cell-cell and cell-matrix interface related processes, including fertilization, muscle fusion, secretion of tumor necrosis factor  $\alpha$  (TNF $\alpha$ ) and modulation of the neurogenic function of Notch and Delta. The ADAM proteins possess a signal-domain, a pro-domain, a metalloprotease domain, a disintegrin domain (Integrin ligand), a cysteine-rich region, an epidermal growth factor-like domain, a transmembrane domain and a cytoplasmic tail. ADAMs are expressed in a wide range of mammalian tissues and several are abundantly expressed in the male reproductive tract. ADAM22 and ADAM23 (designated MDC2 and MDC3, respectively) are structurally similar proteins that contain a disrupted zinc-binding motif, and both are highly expressed in brain. The genes encoding human ADAM22 and ADAM23 map to chromosomes 7q21.12 and 2q33, respectively.

## CHROMOSOMAL LOCATION

Genetic locus: ADAM22 (human) mapping to 7q21.12; Adam22 (mouse) mapping to 5 A1.

## SOURCE

ADAM22 (T-19) is an affinity purified goat polyclonal antibody raised against a peptide mapping within an internal region of ADAM22 of human origin.

## PRODUCT

Each vial contains 200  $\mu$ g IgG in 1.0 ml of PBS with < 0.1% sodium azide and 0.1% gelatin.

Blocking peptide available for competition studies, sc-25999 P, (100  $\mu$ g peptide in 0.5 ml PBS containing < 0.1% sodium azide and 0.2% BSA).

## RESEARCH USE

For research use only, not for use in diagnostic procedures.

## APPLICATIONS

ADAM22 (T-19) is recommended for detection of ADAM22 of human and, to a lesser extent, mouse and rat origin by Western Blotting (starting dilution 1:200, dilution range 1:100-1:1000), immunoprecipitation [1-2  $\mu$ g per 100-500  $\mu$ g of total protein (1 ml of cell lysate)], immunofluorescence (starting dilution 1:50, dilution range 1:50-1:500) and solid phase ELISA (starting dilution 1:30, dilution range 1:30-1:3000).

ADAM22 (T-19) is also recommended for detection of ADAM22 in additional species, including equine, canine, bovine, porcine and avian.

Suitable for use as control antibody for ADAM22 siRNA (h): sc-41419, ADAM22 siRNA (m): sc-41420, ADAM22 shRNA Plasmid (h): sc-41419-SH, ADAM22 shRNA Plasmid (m): sc-41420-SH, ADAM22 shRNA (h) Lentiviral Particles: sc-41419-V and ADAM22 shRNA (m) Lentiviral Particles: sc-41420-V.

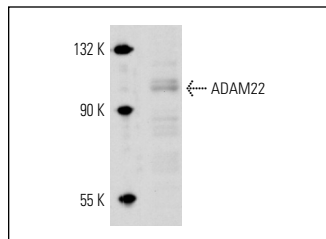
Molecular Weight of ADAM22: 100 kDa.

Positive Controls: rat cerebellum extract: sc-2398.

## RECOMMENDED SECONDARY REAGENTS

To ensure optimal results, the following support (secondary) reagents are recommended: 1) Western Blotting: use donkey anti-goat IgG-HRP: sc-2020 (dilution range: 1:2000-1:100,000) or Cruz Marker<sup>™</sup> compatible donkey anti-goat IgG-HRP: sc-2033 (dilution range: 1:2000-1:5000), Cruz Marker<sup>™</sup> Molecular Weight Standards: sc-2035, TBS Blotto A Blocking Reagent: sc-2333 and Western Blotting Luminol Reagent: sc-2048. 2) Immunoprecipitation: use Protein A/G PLUS-Agarose: sc-2003 (0.5 ml agarose/2.0 ml). 3) Immunofluorescence: use donkey anti-goat IgG-FITC: sc-2024 (dilution range: 1:100-1:400) or donkey anti-goat IgG-TR: sc-2783 (dilution range: 1:100-1:400) with UltraCruz<sup>™</sup> Mounting Medium: sc-24941.

## DATA



ADAM22 (T-19): sc-25999. Western blot analysis of ADAM22 expression in rat cerebellum tissue extract.

## STORAGE

Store at 4° C, **\*\*DO NOT FREEZE\*\***. Stable for one year from the date of shipment. Non-hazardous. No MSDS required.

## PROTOCOLS

See our web site at [www.scbt.com](http://www.scbt.com) or our catalog for detailed protocols and support products.

**MONOS**  
Satisfaction  
Guaranteed

Try **ADAM22 (C-2): sc-373931** or **ADAM22 (F-3): sc-515300**, our highly recommended monoclonal alternatives to ADAM22 (T-19).