

TDP1 (C-15): sc-26040

BACKGROUND

Tyrosyl-DNA phosphodiesterase 1 (TDP1), a DNA repair enzyme, catalyzes the hydrolysis of phosphodiester bonds between tyrosine residues and DNA 3'-phosphates. In addition, TDP1 removes glycolate from single-stranded DNA containing a 3'-phosphoglycolate, suggesting a role in repair of free-radical mediated DNA double-strand breaks. A unique HKD signature motif with highly conserved lysine and histidine residues present in TDP1 places the enzyme in a distinct class within the phospholipase D superfamily. The hydrolytic reaction catalyzed by TDP1 occurs by a phosphoryl transfer reaction common to all members of the PLD superfamily. Loss-of-function mutations in TDP1 may cause spinocerebellar ataxia with axonal neuropathy by interfering with DNA transcription or by inducing apoptosis in postmitotic neurons.

REFERENCES

1. Interthal, H., et al. 2001. The tyrosyl-DNA phosphodiesterase TDP1 is a member of the phospholipase D superfamily. *Proc. Nat. Acad. Sci. USA* 98: 12009-12014.
2. Davies, D.R., et al. 2002. Insights into substrate binding and catalytic mechanism of human tyrosyl-DNA phosphodiesterase (TDP1) from vanadate and tungstate-inhibited structures. *J. Mol. Biol.* 324: 917-932.
3. Inamdar, K.V., et al. 2002. Conversion of phosphoglycolate to phosphate termini on 3' overhangs of DNA double strand breaks by the human tyrosyl-DNA phosphodiesterase hTDP1. *J. Biol. Chem.* 277: 27162-27168.
4. Takashima, H., et al. 2002. Mutation of TDP1, encoding a topoisomerase I-dependent DNA damage repair enzyme in spinocerebellar ataxia with axonal neuropathy. *Nat. Genet.* 32: 267-272.
5. Entrez-Protein (NP_060789). World Wide Web URL: <http://www.ncbi.nlm.nih.gov/80/entrez>

CHROMOSOMAL LOCATION

Genetic locus: TDP1 (human) mapping to 14q32.11; Tdp1 (mouse) mapping to 12 E.

SOURCE

TDP1 (C-15) is an affinity purified goat polyclonal antibody raised against a peptide mapping at the C-terminus of TDP1 of human origin.

PRODUCT

Each vial contains 200 µg IgG in 1.0 ml of PBS with < 0.1% sodium azide and 0.1% gelatin.

Blocking peptide available for competition studies, sc-26040 P, (100 µg peptide in 0.5 ml PBS containing < 0.1% sodium azide and 0.2% BSA).

STORAGE

Store at 4° C, ****DO NOT FREEZE****. Stable for one year from the date of shipment. Non-hazardous. No MSDS required.

RESEARCH USE

For research use only, not for use in diagnostic procedures.

APPLICATIONS

TDP1 (C-15) is recommended for detection of TDP1 of mouse, rat and human origin by Western Blotting (starting dilution 1:200, dilution range 1:100-1:1000), immunofluorescence (starting dilution 1:50, dilution range 1:50-1:500), immunohistochemistry (including paraffin-embedded sections) (starting dilution 1:50, dilution range 1:50-1:500) and solid phase ELISA (starting dilution 1:30, dilution range 1:30-1:3000).

TDP1 (C-15) is also recommended for detection of TDP1 in additional species, including equine, canine, bovine, porcine and avian.

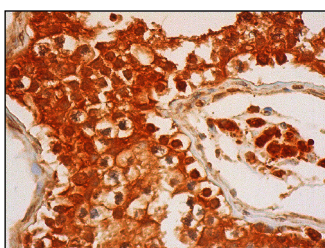
Suitable for use as control antibody for TDP1 siRNA (h): sc-41056, TDP1 siRNA (m): sc-41057, TDP1 shRNA Plasmid (h): sc-41056-SH, TDP1 shRNA Plasmid (m): sc-41057-SH, TDP1 shRNA (h) Lentiviral Particles: sc-41056-V and TDP1 shRNA (m) Lentiviral Particles: sc-41057-V.

Molecular Weight of TDP1: 52 kDa.

RECOMMENDED SECONDARY REAGENTS

To ensure optimal results, the following support (secondary) reagents are recommended: 1) Western Blotting: use donkey anti-goat IgG-HRP: sc-2020 (dilution range: 1:2000-1:100,000) or Cruz Marker™ compatible donkey anti-goat IgG-HRP: sc-2033 (dilution range: 1:2000-1:5000), Cruz Marker™ Molecular Weight Standards: sc-2035, TBS Blotto A Blocking Reagent: sc-2333 and Western Blotting Luminol Reagent: sc-2048. 2) Immunofluorescence: use donkey anti-goat IgG-FITC: sc-2024 (dilution range: 1:100-1:400) or donkey anti-goat IgG-TR: sc-2783 (dilution range: 1:100-1:400) with UltraCruz™ Mounting Medium: sc-24941. 3) Immunohistochemistry: use ImmunoCruz™: sc-2053 or ABC: sc-2023 goat IgG Staining Systems.

DATA



TDP1 (C-15): sc-26040. Immunoperoxidase staining of formalin fixed, paraffin-embedded human testis tissue showing nuclear and cytoplasmic staining of cells in seminiferous ducts and Leydig cells.

PROTOCOLS

See our web site at www.scbt.com or our catalog for detailed protocols and support products.


 MONOS
 Satisfaction
 Guaranteed

Try **TDP1 (C-3): sc-365674**, our highly recommended monoclonal alternative to TDP1 (C-15).