

## IP3R-II (E-15): sc-26384

### BACKGROUND

Inositol 1,4,5-triphosphate (IP3) functions as a second messenger for a myriad of extracellular stimuli including hormones, growth factors and neurotransmitters. Receptor tyrosine kinases indirectly increase the intracellular levels of IP3 through the activation of phospholipases such as phospholipase C (PLC), which convert phosphatidylinositol-4,5 bisphosphate into IP3 and diacylglycerol (DAG). The inositol 1,4,5-triphosphate receptor, IP3R, acts as an inositol triphosphate (IP3)-gated calcium release channel in a variety of cell types. Three IP3 receptor subtypes have been described and are designated IP3R-I, IP3R-II and IP3R-III. IP3R-I is the predominant IP3R subtype expressed in neuronal tissues and the central nervous system, but is also expressed at high levels in the liver.

### REFERENCES

1. Blondel, O., et al. 1993. Sequence and functional characterization of a third inositol triphosphate receptor subtype, IP3R-3, expressed in pancreatic islets, kidney, gastrointestinal tract, and other tissues. *J. Biol. Chem.* 268: 11356-11363.
2. Cameron, A.M., et al. 1995. Calcineurin associated with the inositol 1,4,5-triphosphate receptor-FKBP12 complex modulates Ca<sup>2+</sup> flux. *Cell* 83: 463-472.
3. Raghu, P., et al. 1995. The inositol 1,4,5-triphosphate receptor expression in *Drosophila* suggests a role for IP3 signalling in muscle development and adult hemosensory functions. *Dev. Biol.* 171: 564-577.
4. Zhang, S.X., et al. 1995. *In situ* hybridization of mRNA expression for IP3 receptor and IP3-3-kinase in rat brain after transient focal cerebral ischemia. *Mol. Brain Res.* 32: 252-260.
5. Joseph, S.K., et al. 1995. Heteroligomers of type-I and type-III inositol triphosphate receptors in WB rat liver epithelial cells. *J. Biol. Chem.* 270: 23310-23316.

### CHROMOSOMAL LOCATION

Genetic locus: ITPR2 (human) mapping to 12p12.1; Itpr2 (mouse) mapping to 6 G3.

### SOURCE

IP3R-II (E-15) is an affinity purified goat polyclonal antibody raised against a peptide mapping within an internal region of IP3R-II of human origin.

### PRODUCT

Each vial contains 200 µg IgG in 1.0 ml of PBS with < 0.1% sodium azide and 0.1% gelatin.

Blocking peptide available for competition studies, sc-26384 P, (100 µg peptide in 0.5 ml PBS containing < 0.1% sodium azide and 0.2% BSA).

### STORAGE

Store at 4° C, **\*\*DO NOT FREEZE\*\***. Stable for one year from the date of shipment. Non-hazardous. No MSDS required.

### APPLICATIONS

IP3R-II (E-15) is recommended for detection of IP3R-II of mouse, rat and human origin by Western Blotting (starting dilution 1:200, dilution range 1:100-1:1000), immunoprecipitation [1-2 µg per 100-500 µg of total protein (1 ml of cell lysate)], immunofluorescence (starting dilution 1:50, dilution range 1:50-1:500) and solid phase ELISA (starting dilution 1:30, dilution range 1:30-1:3000).

IP3R-II (E-15) is also recommended for detection of IP3R-II in additional species, including equine, canine, bovine and avian.

Suitable for use as control antibody for IP3R-II siRNA (h): sc-35698, IP3R-II siRNA (m): sc-35699, IP3R-II shRNA Plasmid (h): sc-35698-SH, IP3R-II shRNA Plasmid (m): sc-35699-SH, IP3R-II shRNA (h) Lentiviral Particles: sc-35698-V and IP3R-II shRNA (m) Lentiviral Particles: sc-35699-V.

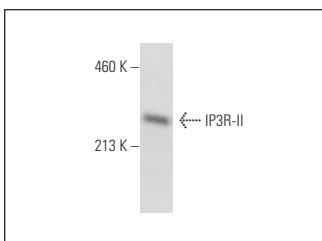
Molecular Weight of IP3R-II: 260 kDa.

Positive Controls: A-10 cell lysate: sc-3806 or HeLa whole cell lysate: sc-2200.

### RECOMMENDED SECONDARY REAGENTS

To ensure optimal results, the following support (secondary) reagents are recommended: 1) Western Blotting: use donkey anti-goat IgG-HRP: sc-2020 (dilution range: 1:2000-1:100,000) or Cruz Marker™ compatible donkey anti-goat IgG-HRP: sc-2033 (dilution range: 1:2000-1:5000), Cruz Marker™ Molecular Weight Standards: sc-2035, TBS Blotto A Blocking Reagent: sc-2333 and Western Blotting Luminol Reagent: sc-2048. 2) Immunoprecipitation: use Protein A/G PLUS-Agarose: sc-2003 (0.5 ml agarose/2.0 ml). 3) Immunofluorescence: use donkey anti-goat IgG-FITC: sc-2024 (dilution range: 1:100-1:400) or donkey anti-goat IgG-TR: sc-2783 (dilution range: 1:100-1:400) with UltraCruz™ Mounting Medium: sc-24941.

### DATA



IP3R-II (E-15): sc-26384. Western blot analysis of IP3R-II expression in HeLa whole cell lysate.

### RESEARCH USE

For research use only, not for use in diagnostic procedures.

**MONOS**  
Satisfaction  
Guaranteed

Try **IP3R-II (A-5): sc-398434**, our highly recommended monoclonal alternative to IP3R-II (E-15).