

# Dvl-3 (C-20): sc-26506

## BACKGROUND

Mammalian homologs of the *Drosophila* dishevelled (Dsh) gene have been identified, including Dvl-1, Dvl-2 and Dvl-3. The mammalian dishevelled proteins contain three homologous domains, two of which are unrelated to any other known protein. The third region is homologous to the discs-large homology domain of *Drosophila* discs-large-1, a tumor suppressor protein. Like their *Drosophila* counterpart, the dishevelled proteins are thought to be involved in embryogenesis. Overexpression of Dvl-1 has been shown to inhibit the phosphorylation of Tau by GSK-3 $\beta$ . This finding may prove to be important in Alzheimer's studies, which have shown that Tau is hyperphosphorylated. In *Drosophila*, Dsh is a component of the frizzled signaling pathway. Both mammalian dishevelled and frizzled proteins are components of the Wnt signaling pathway.

## CHROMOSOMAL LOCATION

Genetic locus: DVL3 (human) mapping to 3q27.1; Dvl3 (mouse) mapping to 16 A3.

## SOURCE

Dvl-3 (C-20) is an affinity purified goat polyclonal antibody raised against a peptide mapping near the C-terminus of Dvl-3 of human origin.

## PRODUCT

Each vial contains 200  $\mu$ g IgG in 1.0 ml of PBS with < 0.1% sodium azide and 0.1% gelatin.

Blocking peptide available for competition studies, sc-26506 P, (100  $\mu$ g peptide in 0.5 ml PBS containing < 0.1% sodium azide and 0.2% BSA).

## STORAGE

Store at 4° C, **\*\*DO NOT FREEZE\*\***. Stable for one year from the date of shipment. Non-hazardous. No MSDS required.

## APPLICATIONS

Dvl-3 (C-20) is recommended for detection of Dvl-3 of mouse, rat and human origin by Western Blotting (starting dilution 1:200, dilution range 1:100-1:1000), immunoprecipitation [1-2  $\mu$ g per 100-500  $\mu$ g of total protein (1 ml of cell lysate)], immunofluorescence (starting dilution 1:50, dilution range 1:50-1:500) and solid phase ELISA (starting dilution 1:30, dilution range 1:30-1:3000).

Dvl-3 (C-20) is also recommended for detection of Dvl-3 in additional species, including bovine.

Suitable for use as control antibody for Dvl-3 siRNA (h): sc-40491, Dvl-3 siRNA (m): sc-40492, Dvl-3 shRNA Plasmid (h): sc-40491-SH, Dvl-3 shRNA Plasmid (m): sc-40492-SH, Dvl-3 shRNA (h) Lentiviral Particles: sc-40491-V and Dvl-3 shRNA (m) Lentiviral Particles: sc-40492-V.

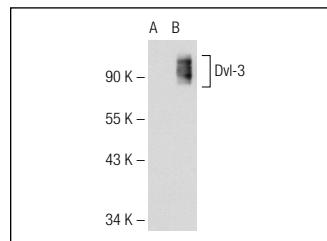
Molecular Weight of Dvl-3: 90 kDa.

Positive Controls: ZR-75-1 cell lysate: sc-2241, Dvl-3 (h): 293T Lysate: sc-114825 or BT-20 cell lysate: sc-2223.

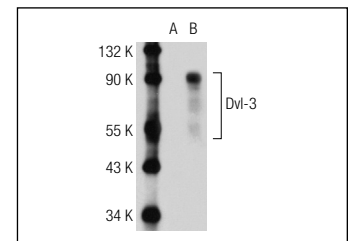
## RECOMMENDED SECONDARY REAGENTS

To ensure optimal results, the following support (secondary) reagents are recommended: 1) Western Blotting: use donkey anti-goat IgG-HRP: sc-2020 (dilution range: 1:2000-1:100,000) or Cruz Marker™ compatible donkey anti-goat IgG-HRP: sc-2033 (dilution range: 1:2000-1:5000), Cruz Marker™ Molecular Weight Standards: sc-2035, TBS Blotto A Blocking Reagent: sc-2333 and Western Blotting Luminol Reagent: sc-2048. 2) Immunoprecipitation: use Protein A/G PLUS-Agarose: sc-2003 (0.5 ml agarose/2.0 ml). 3) Immunofluorescence: use donkey anti-goat IgG-FITC: sc-2024 (dilution range: 1:100-1:400) or donkey anti-goat IgG-TR: sc-2783 (dilution range: 1:100-1:400) with UltraCruz™ Mounting Medium: sc-24941.

## DATA



Dvl-3 (C-20): sc-26506. Western blot analysis of Dvl-3 expression in non-transfected: sc-117752 (A) and human Dvl-3 transfected: sc-176258 (B) 293T whole cell lysates.



Dvl-3 (C-20): sc-26506. Western blot analysis of Dvl-3 expression in non-transfected: sc-117752 (A) and human Dvl-3 transfected: sc-114825 (B) 293T whole cell lysates.

## RESEARCH USE

For research use only, not for use in diagnostic procedures.

## PROTOCOLS

See our web site at [www.scbt.com](http://www.scbt.com) or our catalog for detailed protocols and support products.


 MONOS  
Satisfaction  
Guaranteed

Try **Dvl-3 (G-10): sc-377289** or **Dvl-3 (4D3): sc-8027**, our highly recommended monoclonal alternatives to Dvl-3 (C-20). Also, for AC, HRP, FITC, PE, Alexa Fluor® 488 and Alexa Fluor® 647 conjugates, see **Dvl-3 (G-10): sc-377289**.