

# MORF4L1/2 (F-19): sc-26527

## BACKGROUND

The members of the mortality factor family include mortality factor 4 (MORF4), mortality factor 4 like 1 (MORF4L1), also known as MORF4-related gene 15 (MRG15), and mortality factor 4 like 2 (MORF4L2), also known as MORF-4 related gene X (MRGX). The human MORF4 gene maps to chromosome 4q34.1. MORF4 induces a senescent-like phenotype in complementation group B immortal cell lines. The genes encoding MORF4L1 and MORF4L2 map to chromosomes 15q25.1 and Xq22.2, respectively. MORF4, MORF4L1 and MORF4L2 each contain a C-terminal leucine zipper. An association between MORF4L1, Rb (retinoblastoma tumor suppressor) and PAM14 (protein associated with MORF4L1) suggests a role for MORF4L1 in transcription regulation. MORF4L1 also associates with the histone acetyl transferase MOF. In addition, MORF4, MORF4L1 and MORF4L2 interact with mSin3A and TLE (transducin-like enhancer of split). The MORF/mSin3A/TLE association may repress transcription. In Purkinje cells, MORF4L1 localizes to the dendrites and the nuclei.

## CHROMOSOMAL LOCATION

Genetic locus: MORF4L1 (human) mapping to 15q25.1, MORF4L2 (human) mapping to Xq22.2; Morf4l1 (mouse) mapping to 9 E3.1, Morf4l2 (mouse) mapping to X F1.

## SOURCE

MORF4L1/2 (F-19) is an affinity purified goat polyclonal antibody raised against a peptide mapping within an internal region of MORF4L1 of human origin.

## PRODUCT

Each vial contains 200 µg IgG in 1.0 ml of PBS with < 0.1% sodium azide and 0.1% gelatin.

Blocking peptide available for competition studies, sc-26527 P, (100 µg peptide in 0.5 ml PBS containing < 0.1% sodium azide and 0.2% BSA).

## APPLICATIONS

MORF4L1/2 (F-19) is recommended for detection of MORF4L1 and MORF4L2 of mouse and human origin by Western Blotting (starting dilution 1:200, dilution range 1:100-1:1000), immunoprecipitation [1-2 µg per 100-500 µg of total protein (1 ml of cell lysate)], immunofluorescence (starting dilution 1:50, dilution range 1:50-1:500) and solid phase ELISA (starting dilution 1:30, dilution range 1:30-1:3000).

MORF4L1/2 (F-19) is also recommended for detection of MORF4L1 and MORF4L2 in additional species, including equine, canine, bovine, porcine and avian.

Molecular Weight of MORF4L1: 41/37/27 kDa.

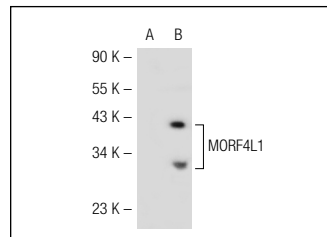
Molecular Weight of MORF4L2: 32 kDa.

Positive Controls: HeLa whole cell lysate: sc-2200 or MORF4L1 (m): 293T Lysate: sc-121744.

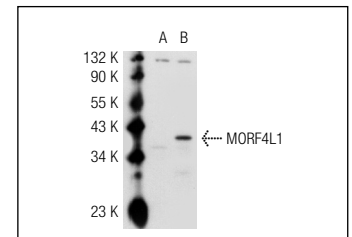
## RECOMMENDED SECONDARY REAGENTS

To ensure optimal results, the following support (secondary) reagents are recommended: 1) Western Blotting: use donkey anti-goat IgG-HRP: sc-2020 (dilution range: 1:2000-1:100,000) or Cruz Marker™ compatible donkey anti-goat IgG-HRP: sc-2033 (dilution range: 1:2000-1:5000), Cruz Marker™ Molecular Weight Standards: sc-2035, TBS Blotto A Blocking Reagent: sc-2333 and Western Blotting Luminol Reagent: sc-2048. 2) Immunoprecipitation: use Protein A/G PLUS-Agarose: sc-2003 (0.5 ml agarose/2.0 ml). 3) Immunofluorescence: use donkey anti-goat IgG-FITC: sc-2024 (dilution range: 1:100-1:400) or donkey anti-goat IgG-TR: sc-2783 (dilution range: 1:100-1:400) with UltraCruz™ Mounting Medium: sc-24941.

## DATA



MORF4L1/2 (F-19): sc-26527. Western blot analysis of MORF4L1 expression in non-transfected: sc-117752 (A) and mouse MORF4L1 transfected: sc-121745 (B) 293T whole cell lysates.



MORF4L1/2 (F-19): sc-26527. Western blot analysis of MORF4L1 expression in non-transfected: sc-117752 (A) and mouse MORF4L1 transfected: sc-121744 (B) 293T whole cell lysates.

## STORAGE

Store at 4° C, \*\*DO NOT FREEZE\*\*. Stable for one year from the date of shipment. Non-hazardous. No MSDS required.

## RESEARCH USE

For research use only, not for use in diagnostic procedures.

## PROTOCOLS

See our web site at [www.scbt.com](http://www.scbt.com) or our catalog for detailed protocols and support products.



Try **MORF4L1/2 (E-2): sc-393208** or **MORF4L1/2 (D-9): sc-514659**, our highly recommended monoclonal alternatives to MORF4L1/2 (F-19).