

# MORF4L1 (W-15)-R: sc-26528-R

## BACKGROUND

The members of the mortality factor family include mortality factor 4 (MORF4), MORF4L1 (also known as MRG15) and MORF4-related gene X (MRGX). The human MORF4 gene maps to chromosome 4q34.1. MORF4 induces a senescent-like phenotype in complementation group B immortal cell lines. The genes encoding MRG15 and MRGX map to chromosomes 15q25.1 and Xq22.2, respectively. MORF4, MORF4L1 and MRGX each contain a C-terminal leucine zipper. An association between MORF4L1, Rb (retinoblastoma tumor suppressor) and PAM14 (protein associated with MORF4L1) suggests a role for MORF4L1 in transcription regulation. MORF4L1 also associates with the histone acetyl transferase MOF. In addition, MORF4 and MRGX interact with mSin3A and TLE (transducin-like enhancer of split). The MORF/mSin3A/TLE association may repress transcription. In Purkinje cells, MORF4L1 localizes to the dendrites and the nuclei.

## CHROMOSOMAL LOCATION

Genetic locus: MORF4L1 (human) mapping to 15q25.1; Morf4l1 (mouse) mapping to 9 E3.1.

## SOURCE

MORF4L1 (W-15)-R is an affinity purified rabbit polyclonal antibody raised against a peptide mapping near the N-terminus of MORF4L1 of human origin.

## PRODUCT

Each vial contains 200 µg IgG in 1.0 ml of PBS with < 0.1% sodium azide and 0.1% gelatin.

Blocking peptide available for competition studies, sc-26528 P, (100 µg peptide in 0.5 ml PBS containing < 0.1% sodium azide and 0.2% BSA).

## RESEARCH USE

For research use only, not for use in diagnostic procedures.

## APPLICATIONS

MORF4L1 (W-15)-R is recommended for detection of MORF4L1 of mouse, rat and human origin by Western Blotting (starting dilution 1:200, dilution range 1:100-1:1000), immunoprecipitation [1-2 µg per 100-500 µg of total protein (1 ml of cell lysate)], immunofluorescence (starting dilution 1:50, dilution range 1:50-1:500) and solid phase ELISA (starting dilution 1:30, dilution range 1:30-1:3000).

MORF4L1 (W-15)-R is also recommended for detection of MORF4L1 in additional species, including equine, canine, bovine, porcine and avian.

Suitable for use as control antibody for MORF4L1 siRNA (h): sc-38045, MORF4L1 siRNA (m): sc-38046, MORF4L1 shRNA Plasmid (h): sc-38045-SH, MORF4L1 shRNA Plasmid (m): sc-38046-SH, MORF4L1 shRNA (h) Lentiviral Particles: sc-38045-V and MORF4L1 shRNA (m) Lentiviral Particles: sc-38046-V.

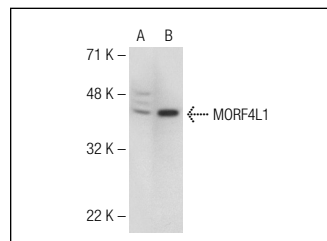
Molecular Weight of MORF4L1: 41/37/27 kDa.

Positive Controls: MORF4L1 (m2): 293T Lysate: sc-121745, HeLa + IL-6 cell lysate: sc-24687 or IMR-32 cell lysate: sc-2409.

## RECOMMENDED SECONDARY REAGENTS

To ensure optimal results, the following support (secondary) reagents are recommended: 1) Western Blotting: use goat anti-rabbit IgG-HRP: sc-2004 (dilution range: 1:2000-1:100,000) or Cruz Marker™ compatible goat anti-rabbit IgG-HRP: sc-2030 (dilution range: 1:2000-1:5000), Cruz Marker™ Molecular Weight Standards: sc-2035, TBS Blotto A Blocking Reagent: sc-2333 and Western Blotting Luminol Reagent: sc-2048. 2) Immunoprecipitation: use Protein A/G PLUS-Agarose: sc-2003 (0.5 ml agarose/2.0 ml). 3) Immunofluorescence: use goat anti-rabbit IgG-FITC: sc-2012 (dilution range: 1:100-1:400) or goat anti-rabbit IgG-TR: sc-2780 (dilution range: 1:100-1:400) with UltraCruz™ Mounting Medium: sc-24941.

## DATA



MORF4L1 (W-15): sc-26528. Western blot analysis of MORF4L1 expression in non-transfected: sc-117752 (A) and mouse MORF4L1 transfected: sc-121745 (B) 293T whole cell lysates.

## STORAGE

Store at 4° C, \*\*DO NOT FREEZE\*\*. Stable for one year from the date of shipment. Non-hazardous. No MSDS required.

## PROTOCOLS

See our web site at [www.scbt.com](http://www.scbt.com) or our catalog for detailed protocols and support products.



Try **MORF4L1/2 (E-2): sc-393208** or **MORF4L1 (E-8): sc-514877**, our highly recommended monoclonal alternatives to MORF4L1 (W-15).