

Rab 3D (S-20): sc-26558

BACKGROUND

The Ras-related superfamily of guanine nucleotide binding proteins, which includes the Ral/Rec, Rap, R-Ras, and Rho/Rab subfamilies, exhibit 30-60% homology with Ras p21. Accumulating data suggests an important role for Rab proteins, either in endocytosis or in biosynthetic protein transport. The transport of newly synthesized proteins from the endoplasmic reticulum to various stacks of the Golgi complex and to secretory vesicles involves at each stage the movement of carrier vesicles, a process that appears to involve Rab protein function. The possibility that Rab proteins might also direct the exocytosis from secretory vesicles to the plasma membrane is supported by the observation that in yeast, the SEC4 protein, which is 40% homologous to Rab proteins, is associated with secretory vesicles. Several members of the Rab subfamily have been identified, each of which is found at a particular stage of a membrane transport pathway.

REFERENCES

- Zahraoui, A., et al. 1989. The human Rab genes encode a family of GTP-binding proteins related to yeast YPT1 and SEC4 products involved in secretion. *J. Biol. Chem.* 264: 12394-12401.
- Chavrier, P., et al. 1992. The complexity of the Rab and Rho GTP-binding protein subfamilies revealed by a PCR cloning approach. *Gene* 112: 261-264.
- Baldini, G., et al. 1992. Cloning of a Rab 3 isotype predominately expressed in adipocytes. *Proc. Natl. Acad. Sci. USA* 89: 5049-5052.
- Chen, Y., et al. 1993. Expression and localization of two low molecular weight GTP-binding proteins, Rab 8 and Rab 10, by epitope tag. *Proc. Natl. Acad. Sci. USA* 90: 6508-6512.
- Karniguian, A., et al. 1993. Identification of small GTP-binding Rab proteins in human platelets: Thrombin-induced phosphorylation of Rab 3B, Rab 6, and Rab 8 proteins. *Proc. Natl. Acad. Sci. USA* 90: 7647-7651.
- Novick, P. and Brennwald, P. 1993. Friends and family: the role of the Rab GTPases in vesicular traffic. *Cell* 75: 597-601.
- Feng, Y., et al. 1995. Rab 7: an important regulator of late endocytic membrane traffic. *J. Cell Biol.* 131: 1435-1452.
- Soldati, T., et al. 1995. Rab 7 and Rab 9 are recruited onto late endosomes by biochemically distinguishable processes. *J. Biol. Chem.* 270: 25541-25548.

CHROMOSOMAL LOCATION

Genetic locus: RAB3D (human) mapping to 19p13.2; Rab3d (mouse) mapping to 9 A3.

SOURCE

Rab 3D (S-20) is an affinity purified goat polyclonal antibody raised against a peptide mapping near the C-terminus of Rab 3D of human origin.

STORAGE

Store at 4° C, ****DO NOT FREEZE****. Stable for one year from the date of shipment. Non-hazardous. No MSDS required.

PRODUCT

Each vial contains 200 µg IgG in 1.0 ml of PBS with < 0.1% sodium azide and 0.1% gelatin.

Blocking peptide available for competition studies, sc-26558 P, (100 µg peptide in 0.5 ml PBS containing < 0.1% sodium azide and 0.2% BSA).

APPLICATIONS

Rab 3D (S-20) is recommended for detection of Rab 3D of human and, to a lesser extent, mouse and rat origin by Western Blotting (starting dilution 1:200, dilution range 1:100-1:1000), immunoprecipitation [1-2 µg per 100-500 µg of total protein (1 ml of cell lysate)], immunofluorescence (starting dilution 1:50, dilution range 1:50-1:500) and solid phase ELISA (starting dilution 1:30, dilution range 1:30-1:3000).

Suitable for use as control antibody for Rab 3D siRNA (h): sc-41818, Rab 3D siRNA (m): sc-41819, Rab 3D shRNA Plasmid (h): sc-41818-SH, Rab 3D shRNA Plasmid (m): sc-41819-SH, Rab 3D shRNA (h) Lentiviral Particles: sc-41818-V and Rab 3D shRNA (m) Lentiviral Particles: sc-41819-V.

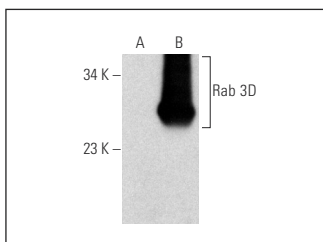
Molecular Weight of Rab 3D: 25 kDa.

Positive Controls: Rab 3D (h): 293T Lysate: sc-113024, CCRF-CEM cell lysate: sc-2225 or AML-193 whole cell lysate: sc-364182.

RECOMMENDED SECONDARY REAGENTS

To ensure optimal results, the following support (secondary) reagents are recommended: 1) Western Blotting: use donkey anti-goat IgG-HRP: sc-2020 (dilution range: 1:2000-1:100,000) or Cruz Marker™ compatible donkey anti-goat IgG-HRP: sc-2033 (dilution range: 1:2000-1:5000), Cruz Marker™ Molecular Weight Standards: sc-2035, TBS Blotto A Blocking Reagent: sc-2333 and Western Blotting Luminol Reagent: sc-2048. 2) Immunoprecipitation: use Protein A/G PLUS-Agarose: sc-2003 (0.5 ml agarose/2.0 ml). 3) Immunofluorescence: use donkey anti-goat IgG-FITC: sc-2024 (dilution range: 1:100-1:400) or donkey anti-goat IgG-TR: sc-2783 (dilution range: 1:100-1:400) with UltraCruz™ Mounting Medium: sc-24941.

DATA



Rab 3D (S-20): sc-26558. Western blot analysis of Rab 3D expression in non-transfected: sc-117752 (A) and human Rab 3D transfected: sc-113024 (B) 293T whole cell lysates.

RESEARCH USE

For research use only, not for use in diagnostic procedures.