

# Slit2 (D-16): sc-26601

## BACKGROUND

Secreted leucine-rich repeat-containing proteins 1-3 (Slit1-3) are secreted glycoproteins that influence axonal guidance and mediate normal neural development by acting as high-affinity signaling ligands for the repulsive guidance receptor, roundabout (robo). Within the developing central nervous system (CNS) of different vertebrate systems, Slit proteins are expressed in equivalent regions, suggesting a conserved function among vertebrate homologs. Slit is expressed in the midline of the central nervous system in both vertebrates and invertebrates, where it functions as a regulatory factor of mesodermal cell movement during gastrulation. Slit2 is a short range inhibitory guidance cue for retinal ganglion cell (RGC) axons that may mediate spatial progression of RGCs.

## CHROMOSOMAL LOCATION

Genetic locus: SLIT2 (human) mapping to 4p15.31; Slit2 (mouse) mapping to 5 B3.

## SOURCE

Slit2 (D-16) is an affinity purified goat polyclonal antibody raised against a peptide mapping near the C-terminus of Slit2 of human origin.

## PRODUCT

Each vial contains 200 µg IgG in 1.0 ml of PBS with < 0.1% sodium azide and 0.1% gelatin.

Blocking peptide available for competition studies, sc-26601 P, (100 µg peptide in 0.5 ml PBS containing < 0.1% sodium azide and 0.2% BSA).

## STORAGE

Store at 4° C, **\*\*DO NOT FREEZE\*\***. Stable for one year from the date of shipment. Non-hazardous. No MSDS required.

## APPLICATIONS

Slit2 (D-16) is recommended for detection of Slit2 of mouse, rat and human origin by Western Blotting (starting dilution 1:200, dilution range 1:100-1:1000), immunoprecipitation [1-2 µg per 100-500 µg of total protein (1 ml of cell lysate)], immunofluorescence (starting dilution 1:50, dilution range 1:50-1:500), immunohistochemistry (including paraffin-embedded sections) (starting dilution 1:50, dilution range 1:50-1:500) and solid phase ELISA (starting dilution 1:30, dilution range 1:30-1:3000).

Slit2 (D-16) is also recommended for detection of Slit2 in additional species, including equine, bovine, porcine and avian.

Suitable for use as control antibody for Slit2 siRNA (h): sc-42258, Slit2 siRNA (m): sc-42259, Slit2 shRNA Plasmid (h): sc-42258-SH, Slit2 shRNA Plasmid (m): sc-42259-SH, Slit2 shRNA (h) Lentiviral Particles: sc-42258-V and Slit2 shRNA (m) Lentiviral Particles: sc-42259-V.

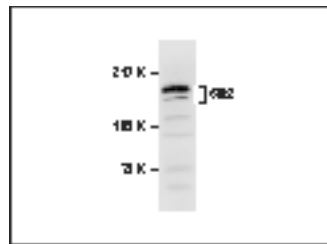
Molecular Weight of Slit2: 200/140/55-60 kDa.

Positive Controls: HEK293 whole cell lysate: sc-45136.

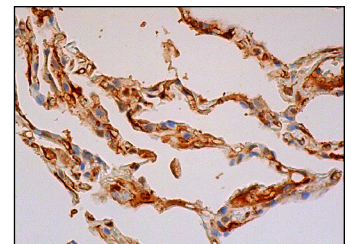
## RECOMMENDED SECONDARY REAGENTS

To ensure optimal results, the following support (secondary) reagents are recommended: 1) Western Blotting: use donkey anti-goat IgG-HRP: sc-2020 (dilution range: 1:2000-1:100,000) or Cruz Marker™ compatible donkey anti-goat IgG-HRP: sc-2033 (dilution range: 1:2000-1:5000), Cruz Marker™ Molecular Weight Standards: sc-2035, TBS Blotto A Blocking Reagent: sc-2333 and Western Blotting Luminol Reagent: sc-2048. 2) Immunoprecipitation: use Protein A/G PLUS-Agarose: sc-2003 (0.5 ml agarose/2.0 ml). 3) Immunofluorescence: use donkey anti-goat IgG-FITC: sc-2024 (dilution range: 1:100-1:400) or donkey anti-goat IgG-TR: sc-2783 (dilution range: 1:100-1:400) with UltraCruz™ Mounting Medium: sc-24941. 4) Immunohistochemistry: use ImmunoCruz™: sc-2053 or ABC: sc-2023 goat IgG Staining Systems.

## DATA



Slit2 (D-16): sc-26601. Western blot analysis of HEK293 whole cell lysate.



Slit2 (D-16): sc-26601. Immunoperoxidase staining of formalin fixed, paraffin-embedded human lung tissue showing cytoplasmic staining of pneumocytes and macrophages.

## SELECT PRODUCT CITATIONS

- Mulik, S., et al. 2011. Activation of endothelial roundabout receptor 4 reduces the severity of virus-induced keratitis. *J. Immunol.* 186: 7195-7204.

## RESEARCH USE

For research use only, not for use in diagnostic procedures.

## PROTOCOLS

See our web site at [www.scbt.com](http://www.scbt.com) or our catalog for detailed protocols and support products.


 MONOS  
Satisfaction  
Guaranteed

Try **Slit2 (F-7): sc-514499**, our highly recommended monoclonal alternative to Slit2 (D-16).