

EMR1 (P-19): sc-26639

BACKGROUND

The epidermal growth factor (EGF)-TM7 family constitutes a group of class B G protein-coupled receptors, which includes CD97, EMR1 (EGF-like molecule containing mucin-like hormone receptor 1, designated F4/80 in mouse), EMR2, EMR3, FIRE, and ETL. These family members are characterized by an extended extracellular region with several N-terminal EGF domains, and are predominantly expressed on cells of the immune system. The EGF-TM7 protein family are encoded by a gene cluster on human chromosome 19p13.3. The F4/80 molecule is solely expressed on the surface of macrophages and serves as a marker for mature macrophage tissues, including Kupffer cells in liver, splenic red pulp macrophages, brain microglia, gut lamina propria, and Langerhans cells in the skin. F4/80/EMR1 undergoes extensive N-linked glycosylation as well as some O-linked glycosylation. The function of F4/80/EMR1 is unclear, but it is speculated to be involved in macrophage adhesion events, cell migration, or as a G protein-coupled signaling component of macrophages.

CHROMOSOMAL LOCATION

Genetic locus: EMR1 (human) mapping to 19p13.3; Emr1 (mouse) mapping to 17 D.

SOURCE

EMR1 (P-19) is an affinity purified goat polyclonal antibody raised against a peptide mapping within an internal region of EMR1 of human origin.

PRODUCT

Each vial contains 200 µg IgG in 1.0 ml of PBS with < 0.1% sodium azide and 0.1% gelatin.

Blocking peptide available for competition studies, sc-26639 P, (100 µg peptide in 0.5 ml PBS containing < 0.1% sodium azide and 0.2% BSA).

STORAGE

Store at 4° C, ****DO NOT FREEZE****. Stable for one year from the date of shipment. Non-hazardous. No MSDS required.

APPLICATIONS

EMR1 (P-19) is recommended for detection of EMR1 of human origin and to a lesser extent, F4/80 of mouse origin, and the corresponding rat homolog by Western Blotting (starting dilution 1:200, dilution range 1:100-1:1000), immunofluorescence (starting dilution 1:50, dilution range 1:50-1:500), immunohistochemistry (including paraffin-embedded sections) (starting dilution 1:50, dilution range 1:50-1:500) and solid phase ELISA (starting dilution 1:30, dilution range 1:30-1:3000).

Suitable for use as control antibody for EMR1 siRNA (h): sc-72157, F4/80 siRNA (m): sc-42865, EMR1 shRNA Plasmid (h): sc-72157-SH, F4/80 shRNA Plasmid (m): sc-42865-SH, EMR1 shRNA (h) Lentiviral Particles: sc-72157-V and F4/80 shRNA (m) Lentiviral Particles: sc-42865-V.

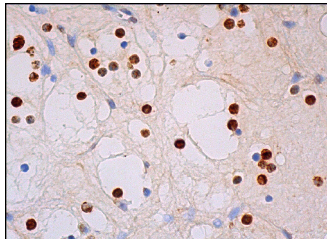
Molecular Weight of EMR1: 160 kDa.

Positive Controls: HeLa whole cell lysate: sc-2200.

RECOMMENDED SECONDARY REAGENTS

To ensure optimal results, the following support (secondary) reagents are recommended: 1) Western Blotting: use donkey anti-goat IgG-HRP: sc-2020 (dilution range: 1:2000-1:100,000) or Cruz Marker™ compatible donkey anti-goat IgG-HRP: sc-2033 (dilution range: 1:2000-1:5000), Cruz Marker™ Molecular Weight Standards: sc-2035, TBS Blotto A Blocking Reagent: sc-2333 and Western Blotting Luminol Reagent: sc-2048. 2) Immunofluorescence: use donkey anti-goat IgG-FITC: sc-2024 (dilution range: 1:100-1:400) or donkey anti-goat IgG-TR: sc-2783 (dilution range: 1:100-1:400) with UltraCruz™ Mounting Medium: sc-24941. 3) Immunohistochemistry: use ImmunoCruz™: sc-2053 or ABC: sc-2023 goat IgG Staining Systems.

DATA



EMR1 (P-19): sc-26639. Immunoperoxidase staining of formalin fixed, paraffin-embedded human nasopharynx tissue showing cytoplasmic staining of leukocytes.

SELECT PRODUCT CITATIONS

- Zhang, X., et al. 2014. Interleukin-1/toll-like receptor-induced nuclear factor κ B signaling participates in intima hyperplasia after carotid artery balloon injury in goto-kakizaki rats: a potential target therapy pathway. PLoS ONE 9: e103794.

RESEARCH USE

For research use only, not for use in diagnostic procedures.

PROTOCOLS

See our web site at www.scbt.com or our catalog for detailed protocols and support products.


 MONOS
Satisfaction
Guaranteed

Try **EMR1 (D-11): sc-365340**, our highly recommended monoclonal alternative to EMR1 (P-19).