

# NHP2 (M-15): sc-26991

## BACKGROUND

Dyskerin (NAP57) associates with the chaperone protein Nopp140 and forms a small ribonucleoprotein particle with GAR1 (NOLA1), NHP2 (NOLA2) and Nop10 for the isomerization of uridine to pseudouridine. GAR1, NHP2 and Dyskerin localize to the dense fibrillar component of the nucleolus and in nuclear Cajal bodies. The Dyskerin gene maps to chromosome Xq28. Missense mutations in the Dyskerin gene interfere with normal nuclear localization of Dyskerin and cause Dyskeratosis congenita (DKC). DKC is a rare, X-linked bone marrow disorder characterized by cutaneous hyperpigmentation, dystrophy of the nails, atrophy of the testicles and leukoplakia of the oral mucosa. The GAR1 gene maps to chromosome 4q25. The NHP2 gene maps to chromosome 5q35.3 and encodes a 155 amino acid protein.

## REFERENCES

- Hassock, S., et al. 1999. Mapping and characterization of the X-linked dyskeratosis congenita (DKC) gene. *Genomics* 55: 21-27.
- Heiss, N.S., et al. 1999. Dyskerin localizes to the nucleolus and its mislocalization is unlikely to play a role in the pathogenesis of dyskeratosis congenita. *Hum. Mol. Genet.* 8: 2515-2524.
- Dragon, F., et al. 2000. *In vitro* assembly of human H/ACA small nucleolar RNPs reveals unique features of U17 and telomerase RNAs. *Mol. Cell. Biol.* 20: 3037-3048.
- Pogacic, V., et al. 2000. Human H/ACA small nucleolar RNPs and telomerase share evolutionarily conserved proteins NHP2 and NOP10. *Mol. Cell. Biol.* 20: 9028-9040.
- Wang, C., et al. 2002. Immunopurified small nucleolar ribonucleoprotein particles pseudouridylate rRNA independently of their association with phosphorylated Nopp140. *Mol. Cell. Biol.* 22: 8457-8466.
- LocusLink Report (LocusID: 54433). <http://www.ncbi.nlm.nih.gov/LocusLink/>

## CHROMOSOMAL LOCATION

Genetic locus: NOLA2 (human) mapping to 5q35.3; Nola2 (mouse) mapping to 11 B1.3.

## SOURCE

NHP2 (M-15) is an affinity purified goat polyclonal antibody raised against a peptide mapping within an internal region of NHP2 of human origin.

## PRODUCT

Each vial contains 200 µg IgG in 1.0 ml of PBS with < 0.1% sodium azide and 0.1% gelatin.

Blocking peptide available for competition studies, sc-26991 P, (100 µg peptide in 0.5 ml PBS containing < 0.1% sodium azide and 0.2% BSA).

## STORAGE

Store at 4° C, **\*\*DO NOT FREEZE\*\***. Stable for one year from the date of shipment. Non-hazardous. No MSDS required.

## APPLICATIONS

NHP2 (M-15) is recommended for detection of NHP2 of mouse, rat and human origin by Western Blotting (starting dilution 1:200, dilution range 1:100-1:1000), immunofluorescence (starting dilution 1:50, dilution range 1:50-1:500), immunohistochemistry (including paraffin-embedded sections) (starting dilution 1:50, dilution range 1:50-1:500) and solid phase ELISA (starting dilution 1:30, dilution range 1:30-1:3000).

NHP2 (M-15) is also recommended for detection of NHP2 in additional species, including equine, canine, bovine and porcine.

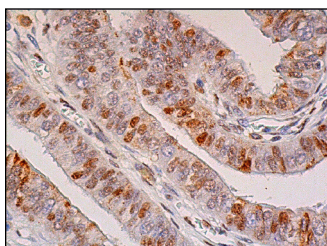
Suitable for use as control antibody for NHP2 siRNA (h): sc-38300, NHP2 siRNA (m): sc-38301, NHP2 shRNA Plasmid (h): sc-38300-SH, NHP2 shRNA Plasmid (m): sc-38301-SH, NHP2 shRNA (h) Lentiviral Particles: sc-38300-V and NHP2 shRNA (m) Lentiviral Particles: sc-38301-V.

Molecular Weight of NHP2: 17 kDa.

## RECOMMENDED SECONDARY REAGENTS

To ensure optimal results, the following support (secondary) reagents are recommended: 1) Western Blotting: use donkey anti-goat IgG-HRP: sc-2020 (dilution range: 1:2000-1:100,000) or Cruz Marker™ compatible donkey anti-goat IgG-HRP: sc-2033 (dilution range: 1:2000-1:5000), Cruz Marker™ Molecular Weight Standards: sc-2035, TBS Blotto A Blocking Reagent: sc-2333 and Western Blotting Luminol Reagent: sc-2048. 2) Immunofluorescence: use donkey anti-goat IgG-FITC: sc-2024 (dilution range: 1:100-1:400) or donkey anti-goat IgG-TR: sc-2783 (dilution range: 1:100-1:400) with UltraCruz™ Mounting Medium: sc-24941. 3) Immunohistochemistry: use ImmunoCruz™: sc-2053 or ABC: sc-2023 goat IgG Staining Systems.

## DATA



NHP2 (M-15): sc-26991. Immunoperoxidase staining of formalin fixed, paraffin-embedded human fallopian tube tissue showing nuclear staining of glandular cells.

## RESEARCH USE

For research use only, not for use in diagnostic procedures.

**MONOS**  
Satisfaction  
Guaranteed

Try **NHP2 (H-9): sc-398430**, our highly recommended monoclonal alternative to NHP2 (M-15).