

Protein S (N-13): sc-27025

BACKGROUND

Protein S (PROS) is a vitamin K-dependent plasma protein that inhibits blood clotting by serving as a cofactor for activated protein C (APC), and facilitates clearance of early apoptotic cells. In the plasma, circulating Protein S becomes inactive upon complexing with C4b-binding protein (C4BP); 60-70% of Protein S circulates in complex with C4BP. Calcium-dependent association of C4BP-Protein S with apoptotic cells influences the regulation of complement activation. Protein S has APC-independent anticoagulant activity through direct inhibition of prothrombin activation via interactions with Factor Xa, Factor Va and phospholipids. Autosomal dominant Protein S deficiency (levels 15 to 37% of normal) correlates with severe recurrent venous thrombosis.

REFERENCES

- Dahlback, B., et al. 1981. High molecular weight complex in human plasma between vitamin K dependent Protein S and complement component C4b-binding protein. *Proc. Nat. Acad. Sci. USA* 78: 2512-2516.
- Comp, P.C., et al. 1984. Recurrent venous thromboembolism in patients with a partial deficiency of Protein S. *N. Engl. J. Med.* 311: 1525-1528.
- Andersen, B.D., et al. 2001. Characterization and structural impact of five novel PROS1 mutations in eleven Protein S-deficient families. *Thromb. Haemost.* 86: 1392-1399.
- Sere, K.M., et al. 2001. Purified Protein S contains multimeric forms with increased APC-independent anticoagulant activity. *Biochemistry* 40: 8852-8860.
- Webb, J.H., et al. 2002. Vitamin K-dependent Protein S localizing complement regulator C4b-binding protein to the surface of apoptotic cells. *J. Immunol.* 169: 2580-2586.
- Rezende, S.M., et al. 2002. Genetic and phenotypic variability between families with hereditary Protein S deficiency. *Thromb. Haemost.* 87: 258-265.
- Online Mendelian Inheritance in Man, OMIM[™]. 2004. Johns Hopkins University, Baltimore, MD. MIM Number: 176880. World Wide Web URL: <http://www.ncbi.nlm.nih.gov/omim/>

CHROMOSOMAL LOCATION

Genetic locus: PROS1 (human) mapping to 3q11.1; Pros1 (mouse) mapping to 16 C1.3.

SOURCE

Protein S (N-13) is an affinity purified goat polyclonal antibody raised against a peptide mapping near the N-terminus of Protein S of human origin.

PRODUCT

Each vial contains 200 µg IgG in 1.0 ml of PBS with < 0.1% sodium azide and 0.1% gelatin.

Blocking peptide available for competition studies, sc-27025 P, (100 µg peptide in 0.5 ml PBS containing < 0.1% sodium azide and 0.2% BSA).

APPLICATIONS

Protein S (N-13) is recommended for detection of precursor and mature Protein S of mouse, rat and human origin by Western Blotting (starting dilution 1:200, dilution range 1:100-1:1000), immunoprecipitation [1-2 µg per 100-500 µg of total protein (1 ml of cell lysate)], immunofluorescence (starting dilution 1:50, dilution range 1:50-1:500) and solid phase ELISA (starting dilution 1:30, dilution range 1:30-1:3000).

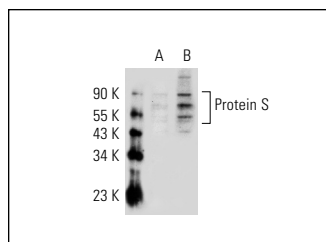
Protein S (N-13) is also recommended for detection of precursor and mature Protein S in additional species, including equine, bovine and porcine.

Suitable for use as control antibody for Protein S siRNA (h): sc-63328, Protein S siRNA (m): sc-63329, Protein S shRNA Plasmid (h): sc-63328-SH, Protein S shRNA Plasmid (m): sc-63329-SH, Protein S shRNA (h) Lentiviral Particles: sc-63328-V and Protein S shRNA (m) Lentiviral Particles: sc-63329-V.

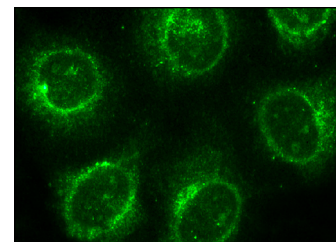
Molecular Weight of C1q-A: 70 kDa.

Positive Controls: Protein S (h): 293 Lysate: sc-111877 or Hep G2 cell lysate: sc-2227.

DATA



Protein S (N-13): sc-27025. Western blot analysis of Protein S expression in non-transfected: sc-110760 (A) and human Protein S transfected: sc-111877 (B) 293 whole cell lysates.



Protein S (N-13): sc-27025. Immunofluorescence staining of methanol-fixed HeLa cells showing perinuclear localization.

STORAGE

Store at 4° C, ****DO NOT FREEZE****. Stable for one year from the date of shipment. Non-hazardous. No MSDS required.

RESEARCH USE

For research use only, not for use in diagnostic procedures.

PROTOCOLS

See our web site at www.scbt.com or our catalog for detailed protocols and support products.



Try **Protein S (F-10): sc-271326** or **Protein S (C-5): sc-271400**, our highly recommended monoclonal alternatives to Protein S (N-13).